

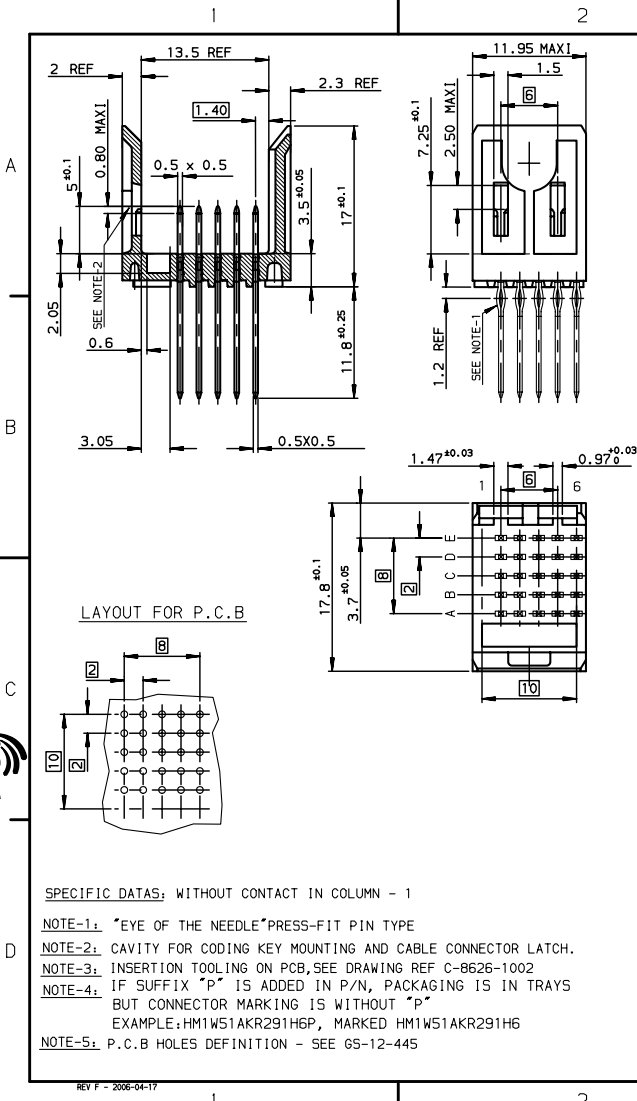
Excellent Integrated System Limited

Stocking Distributor

Click to view price, real time Inventory, Delivery & Lifecycle Information:

[FCI](#)
[HM1W51AKR291H6PLF](#)

For any questions, you can email us directly:
sales@integrated-circuit.com



TIN LEAD PART NUMBER

Part number **HM1W51AKR291H6P**

LEAD FREE PART NUMBER

Part number **HM1W51AKR291H6PLF**

GENERAL CHARACTERISTICS AND ROHS INFORMATIONS:
 SEE PRODUCT SPECIFICATION GS-12-445

www.fciconnect.com		surface 150 1302 ✓	tolerance std 150 406 150 1101	projection 	mm
TOLERANCES UNLESS OTHERWISE SPECIFIED					
Dr	ETIEMBRE	1998/12/04	ANGULAR	0.X	±0.1
Eng	LENOIR	1998/12/04	LINEAR	0.XX	±0.1
Chr	LEGARE	1998/12/04	0.XX	0.XXX	±0.1
Appr	LEGARE	1998/12/04	Product family	METRAL	Spec ref -
METAL STRAIGHT HEADER - 25 WAY				size A3	Scale 2.5
FCI logo SP291				C-8626-0939	
catalog no				CUSTOMER sheet 1 of 1	

SPECIFIC DATAS: WITHOUT CONTACT IN COLUMN - 1

- NOTE-1: "EYE OF THE NEEDLE" PRESS-FIT PIN TYPE
- NOTE-2: CAVITY FOR CODING KEY MOUNTING AND CABLE CONNECTOR LATCH.
- NOTE-3: INSERTION TOOLING ON PCB, SEE DRAWING REF C-8626-1002
- NOTE-4: IF SUFFIX "P" IS ADDED IN P/N, PACKAGING IS IN TRAYS BUT CONNECTOR MARKING IS WITHOUT "P"
EXAMPLE: HM1W51AKR291H6P, MARKED HM1W51AKR291H6
- NOTE-5: P.C.B HOLES DEFINITION - SEE GS-12-445

REV F - 2006-04-17