



Distributor of FCI: Excellent Integrated System Limited

Datasheet of DBL9W4S300G00LF - D-Sub Connector Receptacle, Female Sockets 9 (5 + 4 Power) Position Through Hole Solder

Contact us: sales@integrated-circuit.com Website: www.integrated-circuit.com

Excellent Integrated System Limited

Stocking Distributor

Click to view price, real time Inventory, Delivery & Lifecycle Information:

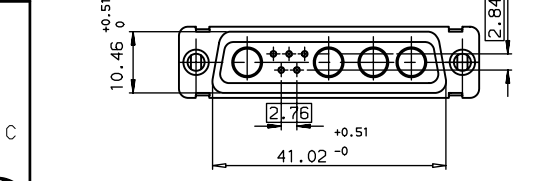
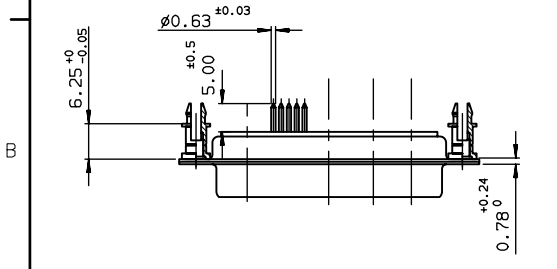
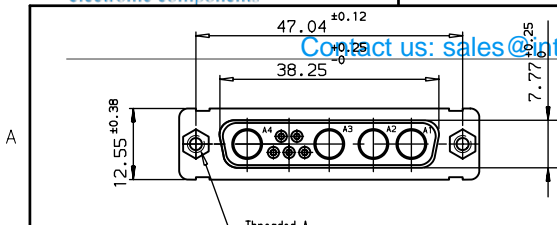
[FCI](#)

[DBL9W4S300G00LF](#)

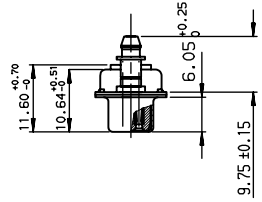
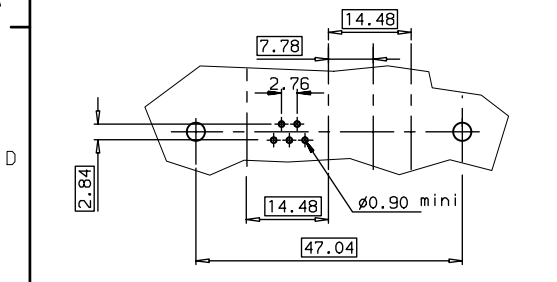
For any questions, you can email us directly:

sales@integrated-circuit.com

Contact us: sales@integrated-circuit.com Website: www.integrated-circuit.com



LAYOUT DIMENSIONS (after plating)
CONNECTOR SIDE VIEW



TIN LEAD PART NUMBER

DBL9W4S300G00	M3
DB09W4S300G00	UNC 4.40
PART NUMBER	Threaded A

LEAD FREE PART NUMBER

DBL9W4S300G00LF	M3
DB09W4S300G00LF	UNC 4.40
PART NUMBER	Threaded A

GENERAL CHARACTERISTICS AND ROHS INFORMATIONS:
SEE DRAWING C01-8639-0003

www.fciconnect.com		surface	ISO 1302	tolerance std	ISO 406	ISO 1101	projection	mm
		TOLERANCES UNLESS OTHERWISE SPECIFIED					size	Scale
Dr	JOUBERT	2002/05/17	ANGULAR	0.X	±0.1		A3	1.5
Eng	PESSON	2002/05/17	LINEAR	0.XX	±0.1		ECN	LS06-0095
Chr	LEGARE	2002/05/17	0.XXX	±2	±0.1		Product family	D-SUB
Appr	LEGARE	2002/05/17	Product family		D-SUB		Spec ref	-
FCI		SOCKET CONNECTOR WITHOUT		C01-8639-1971		Rev.		E
POWER CONTACTS		-		-		CUSTOMER		sheet 1 of 1
catalog no		-		-		-		Printed: Aug 26, 2006

Copyright FCI.

REV F - 2006-04-17