

Excellent Integrated System Limited

Stocking Distributor

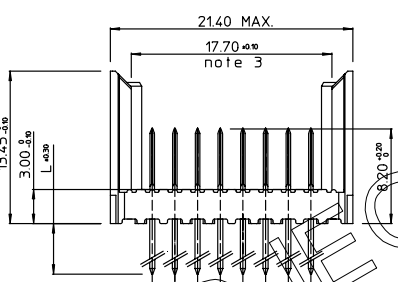
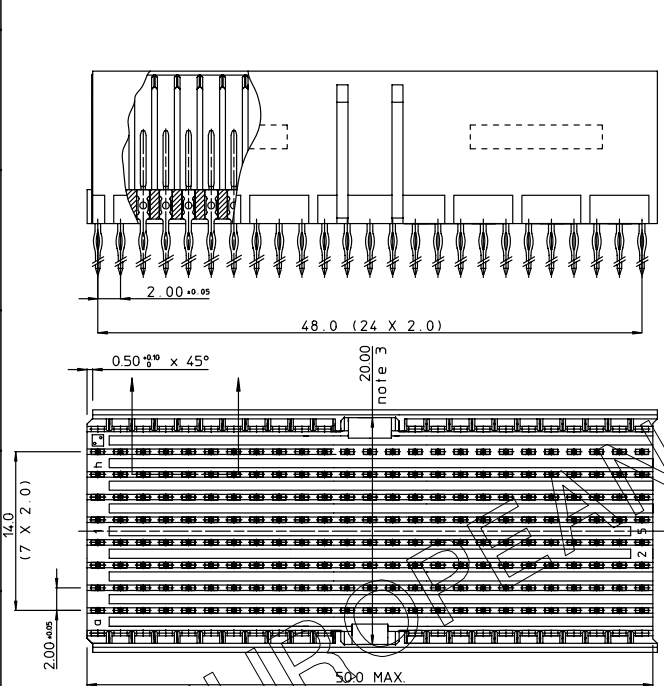
Click to view price, real time Inventory, Delivery & Lifecycle Information:

[FCI](#)
[HM2P95PD8110N9](#)

For any questions, you can email us directly:
sales@integrated-circuit.com

BS.C.202259.007	D	GEN. ST.	01	02	03	04	05	06	07	08	0D	50	60	70	80	90															
		INT. ST.	10	11	12	13	14	18	20	31	32	33	34	38	39	40	42	43	44	45	46	48	56	70	72	73	76	81	83	84	88

REV	DATE	DESCRIPTION	BY	C'K'D'
A	2001-09-14	CONVERSION REVISION 02	KN	
B	2002-03-19	EC 82062	PF	
C	2005-10-26	105-0205	ALEX B	BWP
D	2006-08-08	106-0144	ALEX B	BWP

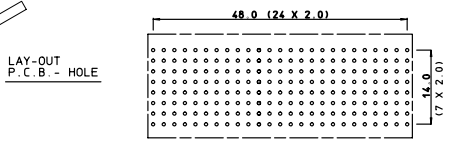


PERFORMANCE CHARACTERISTICS

CURRENT RATING : 1.5 A AT 20°C (FULLY LOADED)
 AT 70°C (FULLY LOADED)
 RATED VOLTAGE : 500 V AC (CONT / CONT)
 OPERATING TEMPERATURE : -55°C TO 125°C
 CONTACT RESISTANCE : 20 mΩ MAX
 INSERTION FORCE : 0.75 N MAX / CONT
 EXTRACTION FORCE : 0.15 N MIN / CONT
 INSULATION RESISTANCE : 10⁴ MΩ MIN

CAT. NR	L ± 0.3	DESCRIPTION
HM2P95PD8110----	3.7	SHORT PRESS-FIT
HM2P95PC8110----	4.5	SHORT PRESS-FIT
HM2P95PK8110----	13	REAR PLUG-UP : LEVEL 1
HM2P95PM8110----	14.5	REAR PLUG-UP : LEVEL 2
HM2P95PN8110----	16	REAR PLUG-UP : LEVEL 3
HM2P95PT8110----	13	WIRE WRAP

- NOTES
1. *HM2P95P#8110---
 PERFORMANCE LEVEL INDICATOR (REFER DWG No. BS.C.201844.003)
 LEAD FREE INDICATOR : LF=LEAD FREE (DIGIT 15&16)
 2. THIS PRODUCT IS CSA APPROVED.
 THIS PRODUCT IS UL RECOGNIZED.
 3. MEASURED AT THE BOTTOM.
 4. FOR RECOMMENDED PTH DIMENSIONS REFER DRAWING : BS.A.201572.001
 5. THE PRODUCT (LF) MEETS EUROPEAN UNION DIRECTIVES AND OTHER COUNTRY REGULATIONS AS DESCRIBED IN GS-22-008



MALE SIGNAL STRAIGHT PRESS-FIT-TO-BOARD CONNECTOR WITH GUIDING

1DEC ± 0.2 2DEC ± 0.1 ANGLES ± 1°	<table border="1"> <tr> <th>APPR.</th> <th>DATE</th> <th>SIGN.</th> </tr> <tr> <td>DRAFT</td> <td>2000-07-06</td> <td>M.Fre</td> </tr> <tr> <td>CHECKED</td> <td></td> <td></td> </tr> <tr> <td>PROD. MGR</td> <td></td> <td></td> </tr> <tr> <td>PR. ENG. MGR</td> <td></td> <td></td> </tr> <tr> <td>PR. MGT. MGR</td> <td></td> <td></td> </tr> </table>	APPR.	DATE	SIGN.	DRAFT	2000-07-06	M.Fre	CHECKED			PROD. MGR			PR. ENG. MGR			PR. MGT. MGR			<table border="1"> <tr> <th>CAT. No.</th> <td>HM2P95P#8110----</td> </tr> <tr> <th>www.fciconnect.com</th> <td></td> </tr> </table>	CAT. No.	HM2P95P#8110----	www.fciconnect.com	
APPR.	DATE	SIGN.																						
DRAFT	2000-07-06	M.Fre																						
CHECKED																								
PROD. MGR																								
PR. ENG. MGR																								
PR. MGT. MGR																								
CAT. No.	HM2P95P#8110----																							
www.fciconnect.com																								
<p>WE RESERVE THE RIGHT TO CHANGE DIMENSIONS OR REG./REVISIONS WITHOUT PRIOR NOTICE.</p> <p>ALL DIMENSIONS IN MM</p>	<p>MPACS 8R STR HDR CONN TYPE DE</p> <p>SCALE</p>	<p>BS.C.202259.007</p> <p>D</p>																						

THIS IS OUR EXCLUSIVE PROPERTY. IT IS NOT TO BE COPIED, REPRINTED OR DISCLOSED TO A THIRD PARTY. NOT USED FOR MANUFACTURING WITHOUT OUR WRITTEN CONSENT, AND HAS TO BE RETURNED TO US IN CASE OF NO USAGE

DIT IS ONZE EIGENDOM EN MAG NIET WERDEN, HERDRIKT, OVERGEMAKT AM DEENDE, NIET VOOR FABRIKANTE GEBRUIKT WORDEN, ZONDER ONZE SCHRIFTELIJKE TOELATING. BIJ NIET GEBRUIK IS TERUGGEGANGEN VOOR ONS.