

Excellent Integrated System Limited

Stocking Distributor

Click to view price, real time Inventory, Delivery & Lifecycle Information:

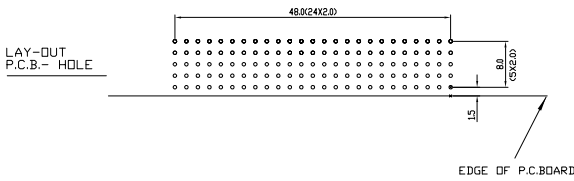
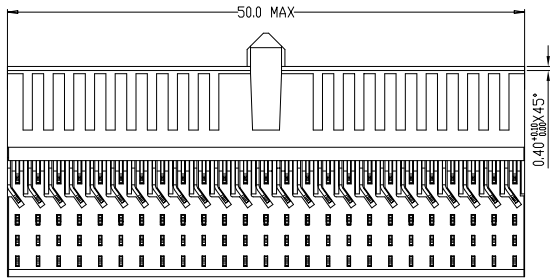
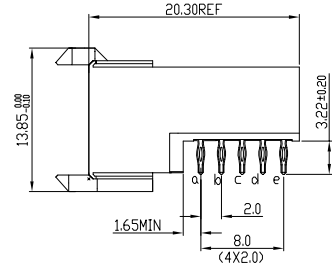
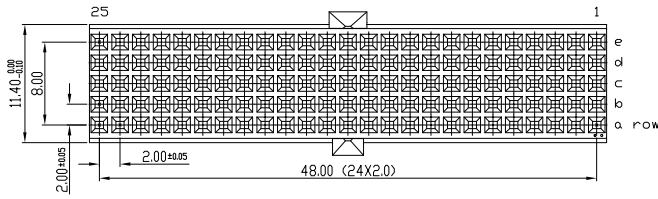
[FCI](#)
[HM2R65PA5100N9](#)

For any questions, you can email us directly:
sales@integrated-circuit.com

Tous droits strictement réservés. Reproduction ou communication à des tiers interdite sous quelque forme que ce soit sans autorisation écrite du propriétaire. Propriété de c FCI. Droits de reproduction FCI.



All rights strictly reserved. Reproduction or issue to third parties in any form whatever is not permitted without written authority from the proprietor. Property of FCI. Copyright FCI.



PERFORMANCE CHARACTERISTICS

CURRENT RATING: 1.5 A AT 20°C (FULLY LOADED)
 1 A AT 70°C (FULLY LOADED)

RATED VOLTAGE: 500 V AC (CONT /CONT)

OPERATING TEMPERATURE: -55°C TO 125°C

CONTACT RESISTANCE: ≤20 mΩ MAX

INSERTION FORCE: 0.75N MAX/CONT

EXTRACTION FORCE: 0.15N MIN /CONT

INSULATION RESISTANCE: 10⁴ MΩ MIN

NOTES

- LEAD FREE INDICATOR -LF=LEAD FREE
- PERFORMANCE LEVEL INDICATOR (REF DWG NO.BS.C.201844.003)
- THIS PRODUCT IS CSA APPROVED. THIS PRODUCT IS UL RECOGNIZED.
- FOR RECOMMENDED PTH DIMENSIONS REFER DRAWING :BS.A.201572.001
- THIS PRODUCT (LF) MEETS EUROPEAN UNION DIRECTIVES AND OTHER COUNTRY REGULATIONS AS DESCRIBED IN GS-22-008

rev	ecn no	dr	date
A	14-09-01	KN	14-09-01
B	20-11-01	MFret	20-11-01
C	02-08-05	gason	02-08-05
D	05-09-07	gason	05-09-07
E	03-22-10	NZ	03-22-10

Material		Spec ref	
Mat code		tolerance	projection
Heatreat		13EC ± 0.2 13EC	MM
Plating/Finish		23EC ± 0.1 23EC	
Dr	N.OTTO	06-05-99	size
Eng			A4
Chr			Scale
Appr			1.500
Product family		MILLIPICS	
Model Name		ECN	
Model Revision		REL Level	
FCI	title	MPACS 5+2R RA RCP CDNN TYPE AB	Rev.
Pro/E file	catalog no	HM2R65PA5100----	E
Customer	sheet 1 of 1	BS,C ,201418,040	