

## Excellent Integrated System Limited

Stocking Distributor

Click to view price, real time Inventory, Delivery & Lifecycle Information:

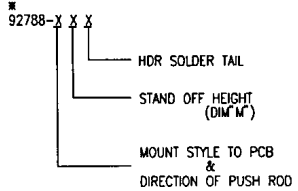
[FCI](#)  
[92788-320](#)

For any questions, you can email us directly:  
[sales@integrated-circuit.com](mailto:sales@integrated-circuit.com)

REVISIONS			
REV	DESCRIPTION	ECN	BY DATE
A	RELEASED	U30023	N.T. B/18/93
B	REVISED	U30087	N.T. B/18/93
C	REVISED	U50086	M.K. B/2/95

PRODUCT NO.	92788
-------------	-------

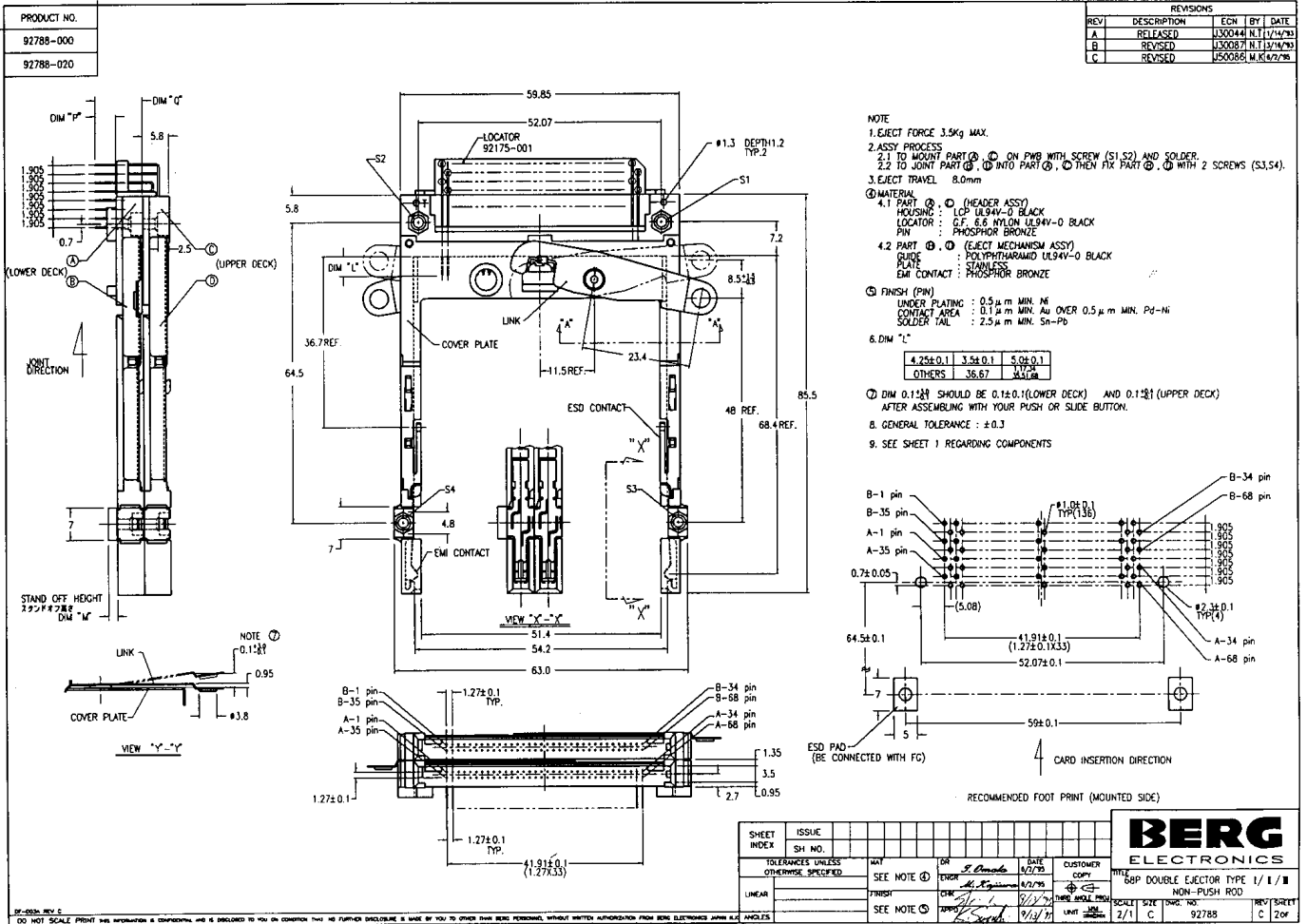
PRODUCT NO. #92788-XXX	STAND OFF DIM "M"(mm)	UPPER DECK			LOWER DECK			LOCATOR 92175-XXX	DIM "P" (mm)	DIM "Q" (mm)	HDR COLOR	SHEET NO.	MOUNTING STYLE TO PCB & DIRECTION OF RINK ARM
		(MECH+HDR) 92792-XXX	(MECH) 92768-XXX	(HDR) 92140-XXX	(MECH+HDR) 92767-XXX	(MECH) 92768-XXX	(HDR) 92140-XXX						
000	0	000	001	005	100	101	000	001	2.8	8.6	BLACK	NO.2	
020	2	020	001	045	120	121	040	001	2.5	10.3	BLACK	NO.3	
100	0	100	101	005	000	001	000	001	2.8	8.6	BLACK	NO.4	
120	2	120	101	045	020	021	040	001	2.5	10.3	BLACK	NO.5	
200	0	000	001	005	000	001	000	001	2.8	8.6	BLACK	NO.6	
220	2	020	001	045	020	021	040	001	2.5	10.3	BLACK	NO.7	
300	0	100	101	005	100	101	000	001	2.8	8.6	NATURAL	NO.8	
320	2	120	101	045	120	121	040	001	2.5	10.3	NATURAL	NO.9	
500	0	600	001	505	500	101	500	001	2.8	8.6	NATURAL	NO.10	
520	2	620	001	545	520	121	540	001	2.5	10.3	NATURAL	NO.11	
600	0	500	101	505	600	001	500	001	2.8	8.6	NATURAL	NO.12	
620	2	520	101	545	620	021	540	001	2.5	10.3	NATURAL	NO.13	
700	0	500	101	505	500	101	500	001	2.8	8.6	NATURAL	NO.14	
720	2	520	101	545	520	121	540	001	2.5	10.3	NATURAL	NO.15	
800	0	600	001	505	600	001	500	001	2.8	8.6	NATURAL	NO.16	
820	2	620	001	545	620	021	540	001	2.5	10.3	NATURAL	NO.17	

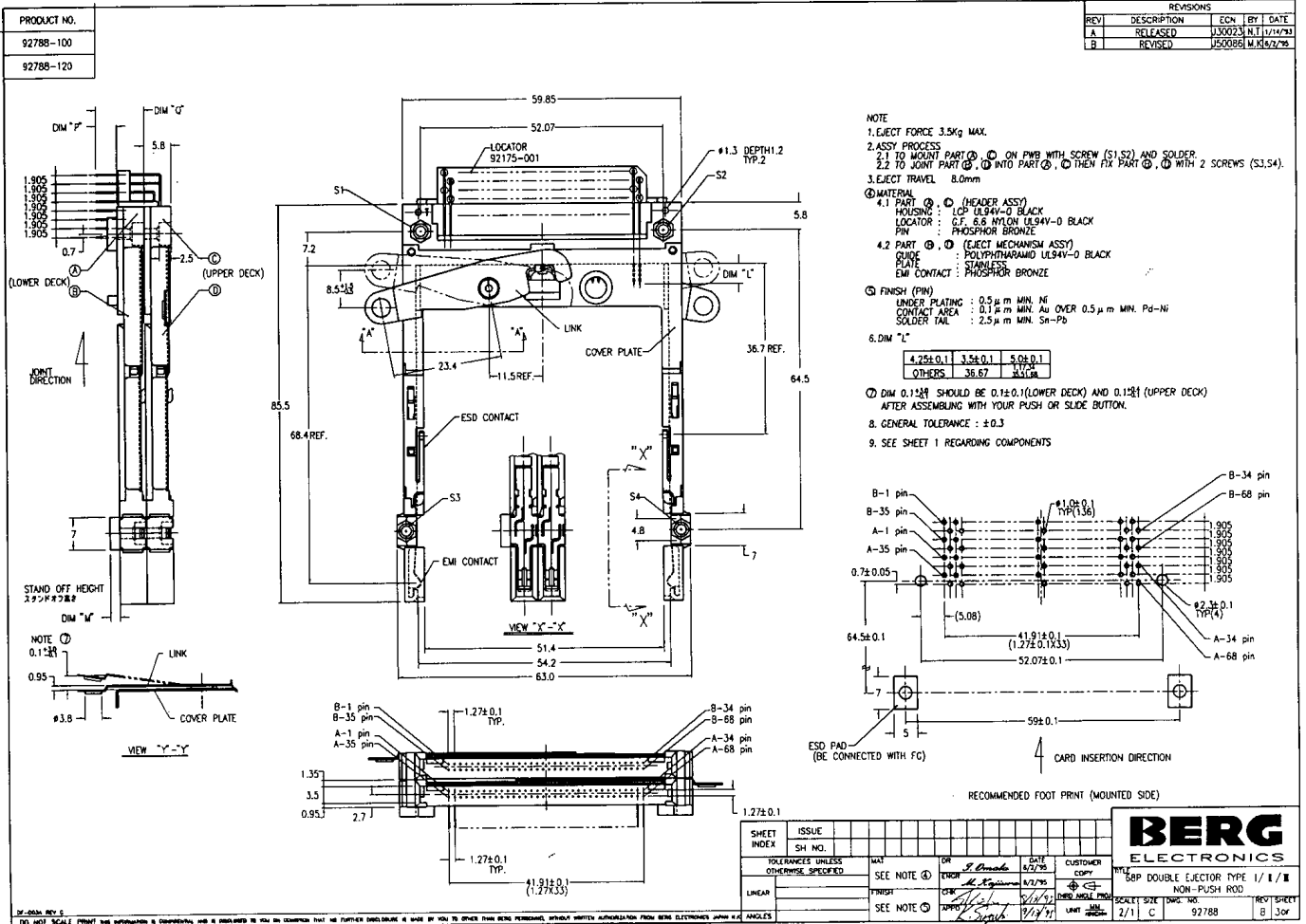


- HDR SOLDER TAIL            0 : R/A
- STAND OFF HEIGHT  
(DIM "M")                    0 : 0mm(NONE)  
    2 : 2mm
- MOUNT STYLE TO PCB  
&  
DIRECTION OF PUSH ROD    0 : TOP MOUNT & RIGHT-LEFT LINK ARM  
    1 : TOP MOUNT & LEFT-RIGHT LINK ARM  
    2 : TOP MOUNT & RIGHT-RIGHT LINK ARM  
    3 : TOP MOUNT & LEFT-LEFT LINK ARM  
    4 : BOTTOM MOUNT & RIGHT-LEFT LINK ARM  
    5 : BOTTOM MOUNT & LEFT-RIGHT LINK ARM  
    6 : BOTTOM MOUNT & RIGHT-RIGHT LINK ARM  
    7 : BOTTOM MOUNT & LEFT-LEFT LINK ARM  
    8 : BOTTOM MOUNT & RIGHT-LEFT LINK ARM

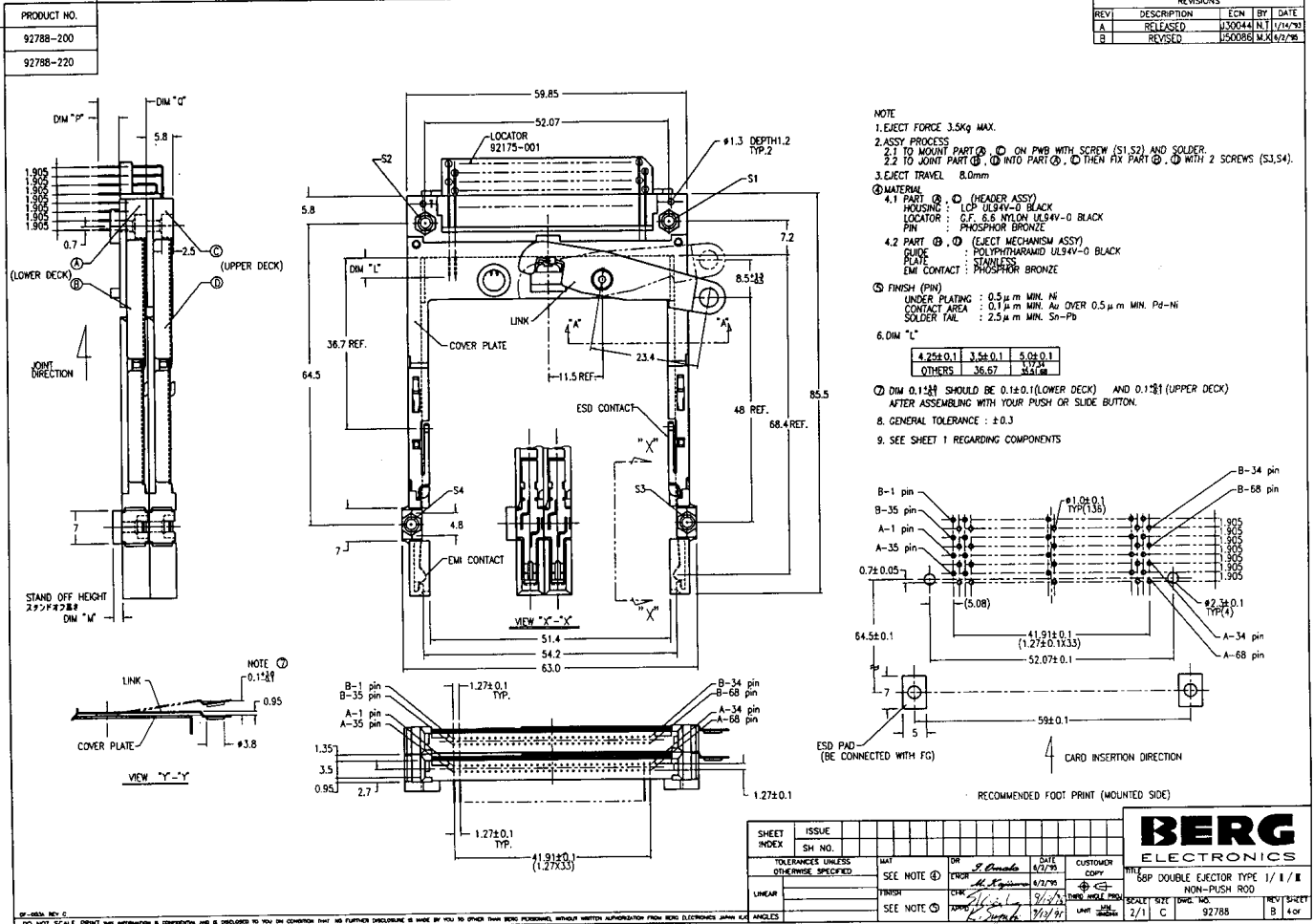
SHEET INDEX	ISSUE	C	B	B	B	B	B	B	B	B	B	B	B	B	B	B	B	B	B	B
	SH NO.	1	2	3	4	5	6	7	8	9										
TOLERANCES UNLESS OTHERWISE SPECIFIED		<p><b>BERG ELECTRONICS</b></p> <p>88P DOUBLE EJECTOR TYPE 1 / 1 / 1 NON-PUSH ROD</p> <p>SCALE: 1:1    SHEET NO: 92788    REV: C    SHEET 1 of 9</p>																		

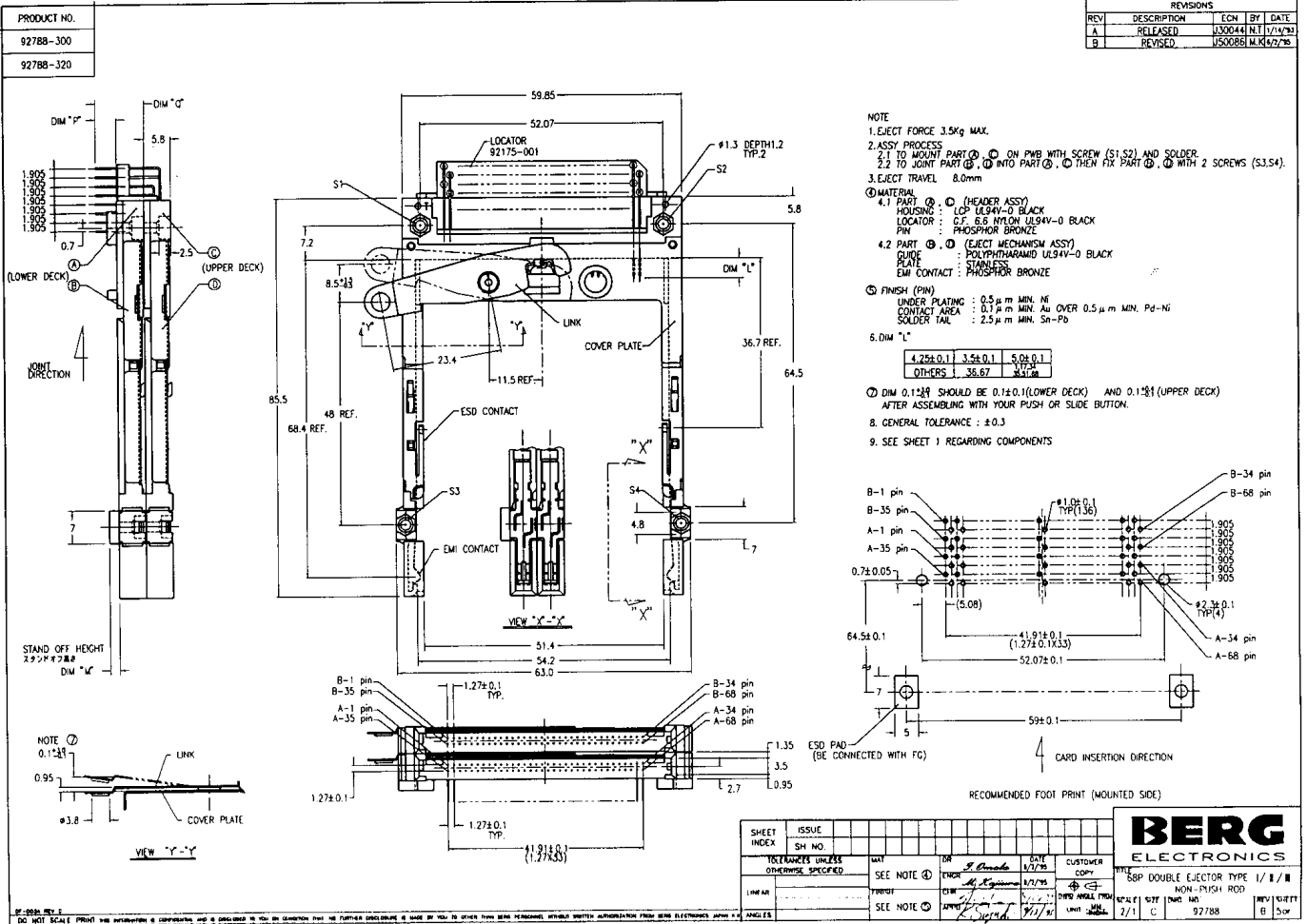
DO NOT SCALE PRINT AND INFORMATION IS CONFIDENTIAL AND IS DISCLOSED TO YOU BY CONTRACT AND NO FURTHER DISCLOSURE IS MADE BY YOU TO OTHER THAN BERG PERSONNEL WITHOUT WRITTEN AUTHORIZATION FROM BERG ELECTRONICS JAPAN S.R.L.

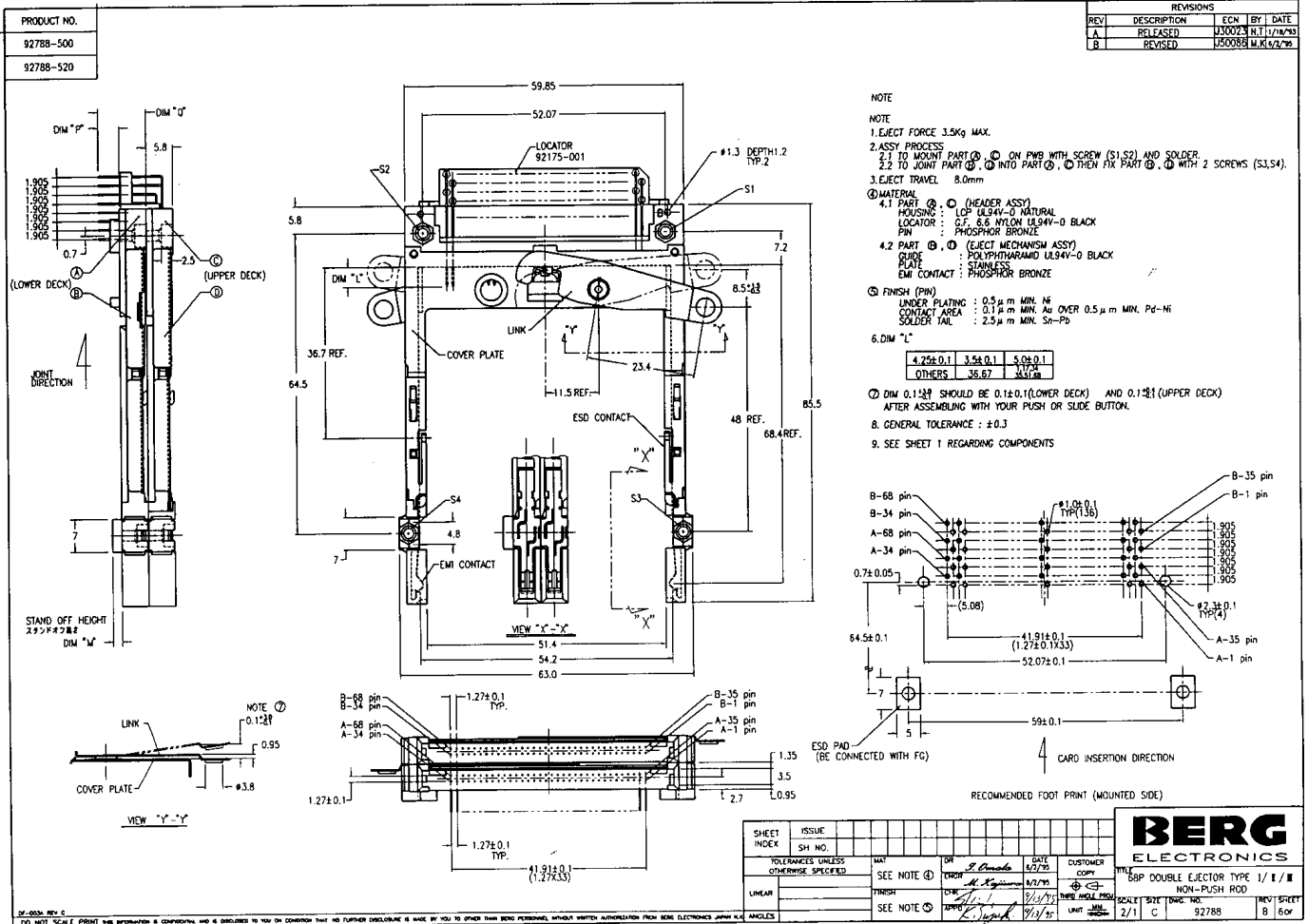




REVISIONS				
REVI	DESCRIPTION	ECN	BY	DATE
A	RELEASED	U30044	N.I	1/14/93
B	REVISED	U50086	M.X	6/2/96







REVISIONS				
REV	DESCRIPTION	ECN	BY	DATE
A	RELEASED	030044	NT	17/11/99
B	REVISED	050088	MLM	07/2/99

PRODUCT NO.
92788-600
92788-620

**NOTE**

- EJECT FORCE 3.5kg MAX.
- ASSY PROCESS
  - TO MOUNT PART ① ON PWB WITH SCREW (S1,S2) AND SOLDER
  - TO JOINT PART ②, ③ INTO PART ④, ⑤ THEN FIX PART ⑥, ⑦ WITH 2 SCREWS (S3,S4)
- EJECT TRAVEL 8.0mm
- MATERIAL
  - PART ① (HEADER ASSY)
    - UNDER PLATING : COP UL94V-0 NATURAL
    - LOCATOR : C.F. 6.6 NYLON UL94V-0 BLACK
    - PIN : PHOSPHOR BRONZE
  - PART ② (EJECT MECHANISM ASSY)
    - GUIDE : COP/PHOSPHOR BRONZE UL94V-0 BLACK
    - PLATE : STAINLESS
    - EMI CONTACT : PHOSPHOR BRONZE
- FINISH (Pin)
  - UNDER PLATING : 0.5 μm MIN. Ni
  - CONTACT AREA : 0.1 μm MIN. Au OVER 0.5 μm MIN. Pd-Ni
  - SOLDER TAIL : 2.5 μm MIN. Sn-Pb
- DIM "L"
 

4.25±0.1	3.5±0.1	5.0±0.1
OTHERS 36.67 ±0.1		

① DIM 0.12±0.1 SHOULD BE 0.1±0.1 (LOWER DECK) AND 0.1±0.1 (UPPER DECK) AFTER ASSEMBLING WITH YOUR PUSH OR SLIDE BUTTON.

8. GENERAL TOLERANCE : ±0.3

9. SEE SHEET 1 REGARDING COMPONENTS

RECOMMENDED FOOT PRINT (MOUNTED SIDE)

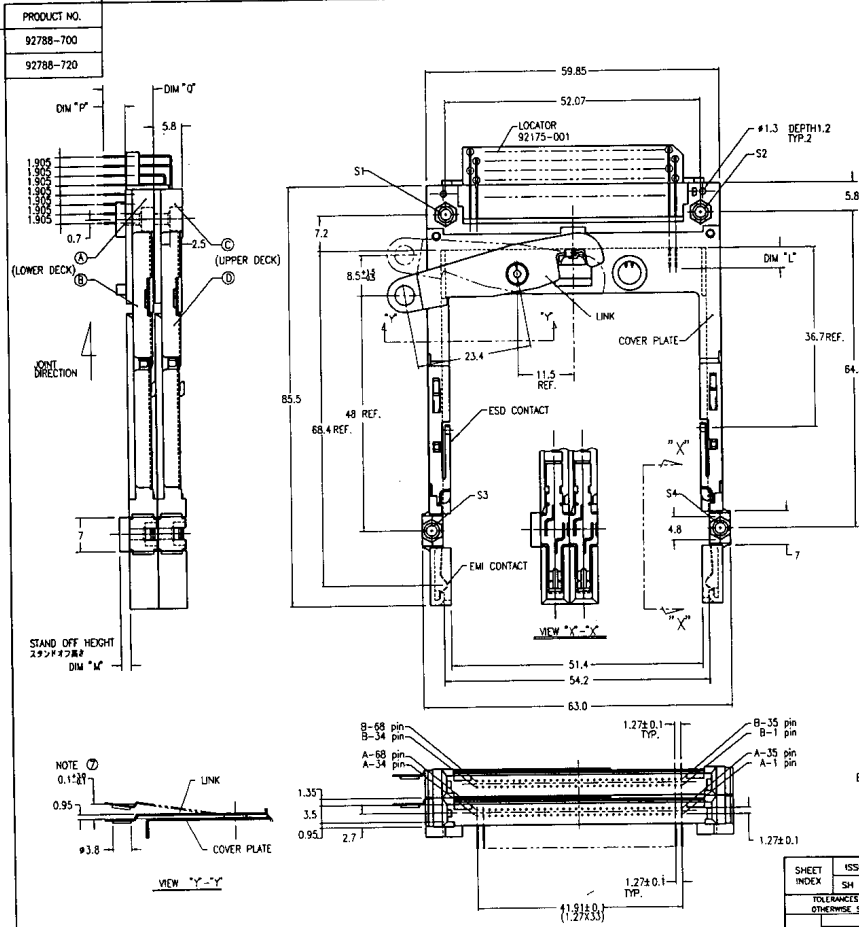
SHEET INDEX	ISSUE	SH NO.	DATE	CUSTOMER COPY
	TOLERANCES UNLESS OTHERWISE SPECIFIED		02/2/99	
LINEAR	SEE NOTE ①	ENGR. <i>J. Brando</i>		
	FINISH	CHK. <i>M. Aguiar</i>	02/2/99	
	SEE NOTE ②	DRWG. <i>S. S. S.</i>	11/11/99	

TYPE: BAP DOUBLE EJECTOR TYPE I / I / II  
 NON-PUSH ROO

REV: 1/1  
 B / 7ex



REVISIONS			
REV	DESCRIPTION	ECN	BY DATE
A	RELEASED	130044	N.I./1/14/93
B	REVISED	1500066	M.K/4/2/96



NOTE  
 1. EJECT FORCE 3.5kg MAX.  
 2. ASSEMBLY PROCESS  
 2.1 TO MOUNT PART ② ON PWB WITH SCREW (S1,S2) AND SOLDER.  
 2.2 TO JOINT PART ③ INTO PART ②, THEN FIX PART ② WITH 2 SCREWS (S3,S4).  
 3. EJECT TRAVEL 8.0mm

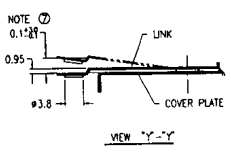
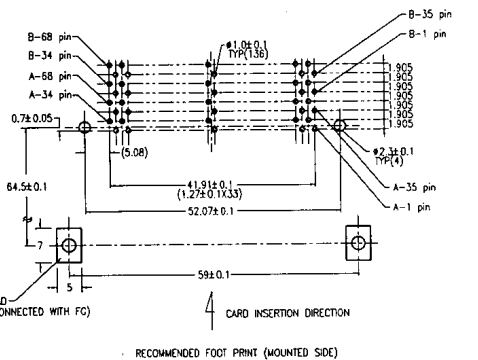
③ MATERIAL  
 4.1 PART ③ (HEADER ASSY)  
 HOUSING : LCP UL94V-0 NATURAL  
 LOCATOR : G.F. 6.6 NYLON UL94V-0 BLACK  
 PIN : PHOSPHOR BRONZE  
 4.2 PART ③ (EJECT MECHANISM ASSY)  
 PLATE : POLYPHTHALAMID UL94V-0 BLACK  
 SPRING : STAINLESS  
 EM CONTACT : PHOSPHOR BRONZE

④ FINISH (PIN)  
 UNDER PLATING : 0.5µm MIN. Ni  
 CONTACT AREA : 0.1µm MIN. Au OVER 0.5µm MIN. Pd-Ni  
 SOLDER TAIL : 2.5µm MIN. Sn-Pb

6. DIM "L"  

4.25±0.1	3.5±0.1	5.0±0.1
OTHERS	35.67	35.14

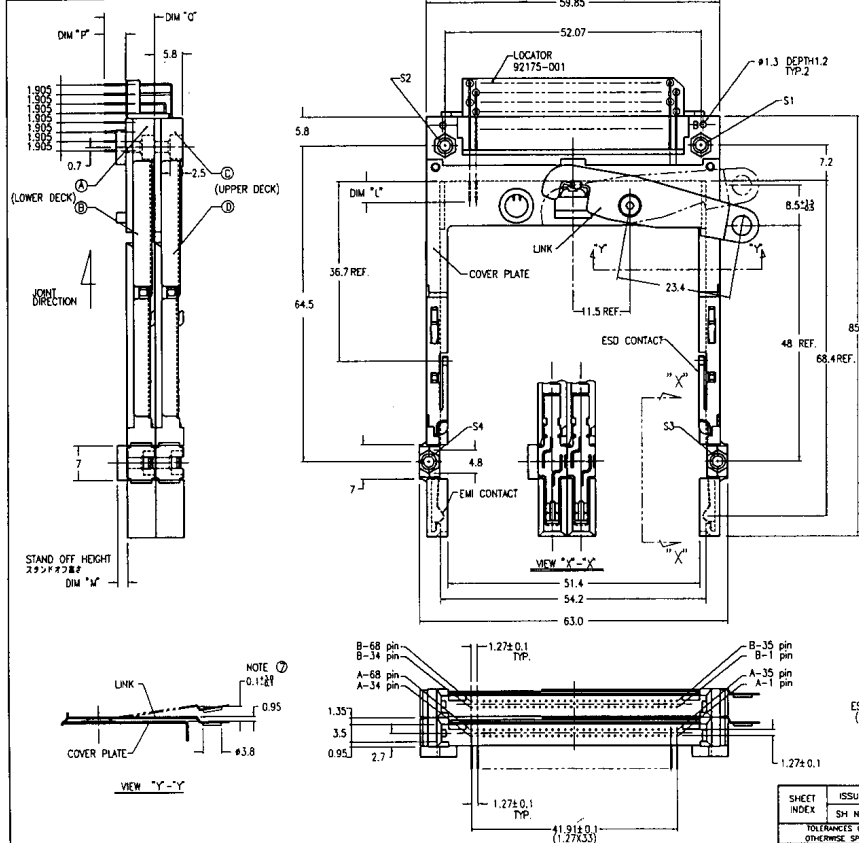
⑤ DIM 0.128 SHOULD BE 0.12±0.1 (LOWER DECK) AND 0.12±0.1 (UPPER DECK)  
 AFTER ASSEMBLING WITH YOUR PUSH OR SLIDE BUTTON.  
 8. GENERAL TOLERANCE : ±0.3  
 9. SEE SHEET 1 REGARDING COMPONENTS



SHEET INDEX	ISSUE	DATE	BY	CHECKED	UNIT	CUSTOMER	SCALE	SIZE	DATE NO.	REV	SHEET
						BERG ELECTRONICS	2/1	C	92788	B	8 of 9

REVISIONS			
REV	DESCRIPTION	ECN	BY DATE
A	RELEASED	130044 H.1	1/14/93
B	REVISED	150088 M.KI4/2/93	

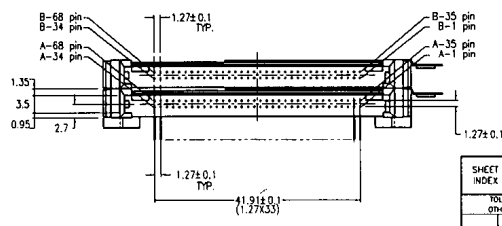
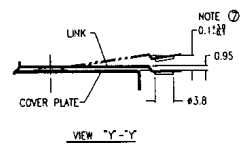
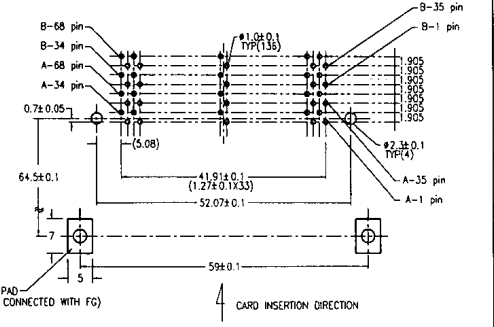
PRODUCT NO.
92788-800
92788-820



NOTE  
 1. EJECT FORCE 3.5kg MAX.  
 2. ASSY PROCESS  
 2.1 TO MOUNT PART ② ON PWB WITH SCREW (S1,S2) AND SOLDER.  
 2.2 TO JOINT PART ③ INTO PART ②, THEN FIX PART ④ WITH 2 SCREWS (S3,S4).  
 3. EJECT TRAVEL 8.0mm  
 ④ MATERIAL  
 4.1 PART ② (HEADER ASSY)  
 HOUSING: LCP ULS4V-0 NATURAL  
 LOCATOR: C.F. 6.8 MTDOM ULS4V-0 BLACK  
 PIN: PHOSPHOR BRONZE  
 4.2 PART ③ (EJECT MECHANISM ASSY)  
 GUIDE: POLYPHTHARIMID ULS4V-0 BLACK  
 PLATE: STAINLESS  
 EMI CONTACT: PHOSPHOR BRONZE  
 ⑤ FINISH (PIN)  
 UNDER PLATING: 0.5 μm MIN. Ni  
 CONTACT AREA: 0.1 μm MIN. Au OVER 0.5 μm MIN. Pd-Ni  
 SOLDER TAIL: 2.5 μm MIN. Sn-Pb  
 6. DIM \*L\*  

4.25±0.1	3.5±0.1	5.0±0.1
OTHERS	36.67	33.1±0.1

 ⑦ DIM 0.1±0.1 SHOULD BE 0.1±0.1 (LOWER DECK) AND 0.1±0.1 (UPPER DECK)  
 AFTER ASSEMBLING WITH YOUR PUSH OR SLIDE BUTTON.  
 8. GENERAL TOLERANCE: ±0.3  
 9. SEE SHEET 1 REGARDING COMPONENTS



SHEET INDEX	ISSUE	SH NO.	DATE	CUSTOMER	DATE
			5/2/93		
TOLERANCES UNLESS OTHERWISE SPECIFIED		UNIT	DATE	COPY	
		MM	5/2/93		
LINEAR	SEE NOTE ④	FRAMES	DATE	NO. MOLE PINS	
ANGLES	SEE NOTE ⑤	APPRO	5/2/93	SCALE	
			5/2/93	SIZE	
				TYPE	
				NO.	
				REV	
				SHEET	
				B	9 of 9

**BERG ELECTRONICS**  
 68P DOUBLE EJECTOR TYPE 1/1/11  
 NON-PUSH ROD

92788-800-0  
 DO NOT SCALE PRINT THIS INFORMATION IS CONFIDENTIAL AND IS RELEASED TO YOU ON CONDITION THAT NO FURTHER DISCLOSURE IS MADE BY YOU TO OTHER THAN BERG PERSONNEL WITHOUT WRITTEN AUTHORIZATION FROM BERG ELECTRONICS JOHN L. HANLEY