

Excellent Integrated System Limited

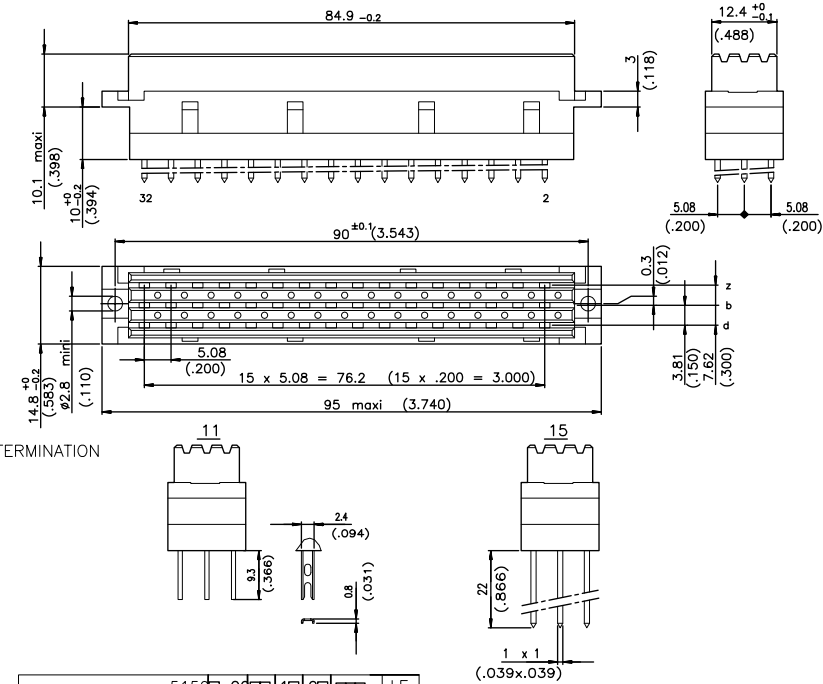
Stocking Distributor

Click to view price, real time Inventory, Delivery & Lifecycle Information:

[FCI](#)
[5159009321894AAALF](#)

For any questions, you can email us directly:
sales@integrated-circuit.com

DIMENSIONS mm (inches)



ELECTRICAL DATA

-Current at AMB	5.5 A at 20° / 4 A at 70°
-Contact resistance	≤15mΩ according to DIN 41640 Teil 4 test 2a
-Insulation resistance	≥10 ¹⁰ MΩ according to DIN 41640 teil 7 test 3a
-TEST VOLTAGE	according to DIN 41640 teil 21
contact/contact	1550V eff
contact/ground	2500V eff

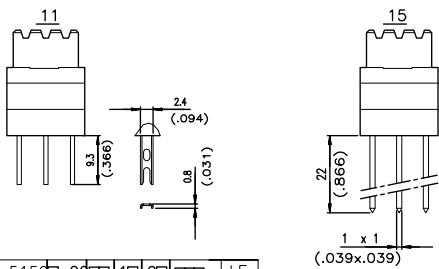
MECHANICAL DATA

-Insertion force	≤75N
-Mechanical endurance	-class 1 500 matings/unmatings according to DIN41640 teil 21 -class 2 400 matings/unmatings according to DIN41640 teil 21
-Material insulator	Polyester UL94V0
-Material contacts	Copper alloy
-Finishing contact surface	Gold over nickel Lead Free
-Finishing termination	Lead-Free
-Shock	≤30m/s according to DIN 41640 Teil 14 test 6c
-Vibration	-class 1 10-2000Hz/20g according to DIN 41640 Teil 15 -class 2 10-500Hz/5g according to DIN 41640 Teil 15

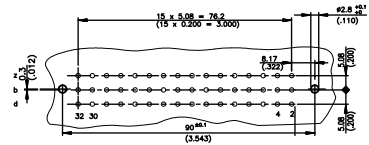
ENVIRONMENTAL DATA

-Climatic category	According to DIN 41612
-Corrosion	According to DIN 41612

TERMINATION



P.C. CARD DRILLING



NOTE RoHS INFORMATION

- The "LF" products meet European Union Directives and other country regulations as described in GS-22-008.
 - The housing will withstand exposure to 280°C peak temperature for 3.5 seconds in a wave solder application with a 1.6mm minimum thick circuit board.
 -Packaging spec:see GS-14-920

LEAD-FREE PART-NUMBER	5159009321894AAALF
CONTACT TERMINATION	Straight, apply W/3 wraps Hand solder
NUMBER OF CONTACTS 32 or 48	32
TERMINATION	W/W, 3 wraps Hand solder
PERFORMANCE CLASS	DIN 41612 class 2 DIN 41612 class 1
CONTACT ARRANGEMENT	Row z, b and d with contacts (48) Row z and d with contacts (32) Row z and b with contacts (32) Row z, b and d with contacts (48) Row z and d with contacts (32) Row z and b with contacts (32)
LEAD-FREE	AAB

www.fciconnect.com		surface ISO 1302	tolerance std ISO 406 ISO 110	projection	mm
TOLERANCES UNLESS OTHERWISE SPECIFIED		ANGULAR	LINEAR	size	Scale
		0.x	±0.1	A2	2
		0.xx	±0.1	ECN	F12-0053
		0.00x	±0.1	Spec ref -	
DR MPESSON 2006/02/21		Product family DIN POWER 5159			
Eng MPESSON 2006/02/21		Product family			
Cdr LEGARE 2006/02/21		Product family			
Appr LEGARE 2006/02/21		Product family			
REV	REV NO	DATE			
H	F12-0214	APA 2010/10/01			
J	F11-0028	APA 2011/02/01			
K	F12-0053	APA 2012/05/01			
E	LS96-0097	LOC 2006/07/26			
F	LS96-0113	LOC 2006/08/20			
G	LS97-0288	LOC 2007/11/10			