

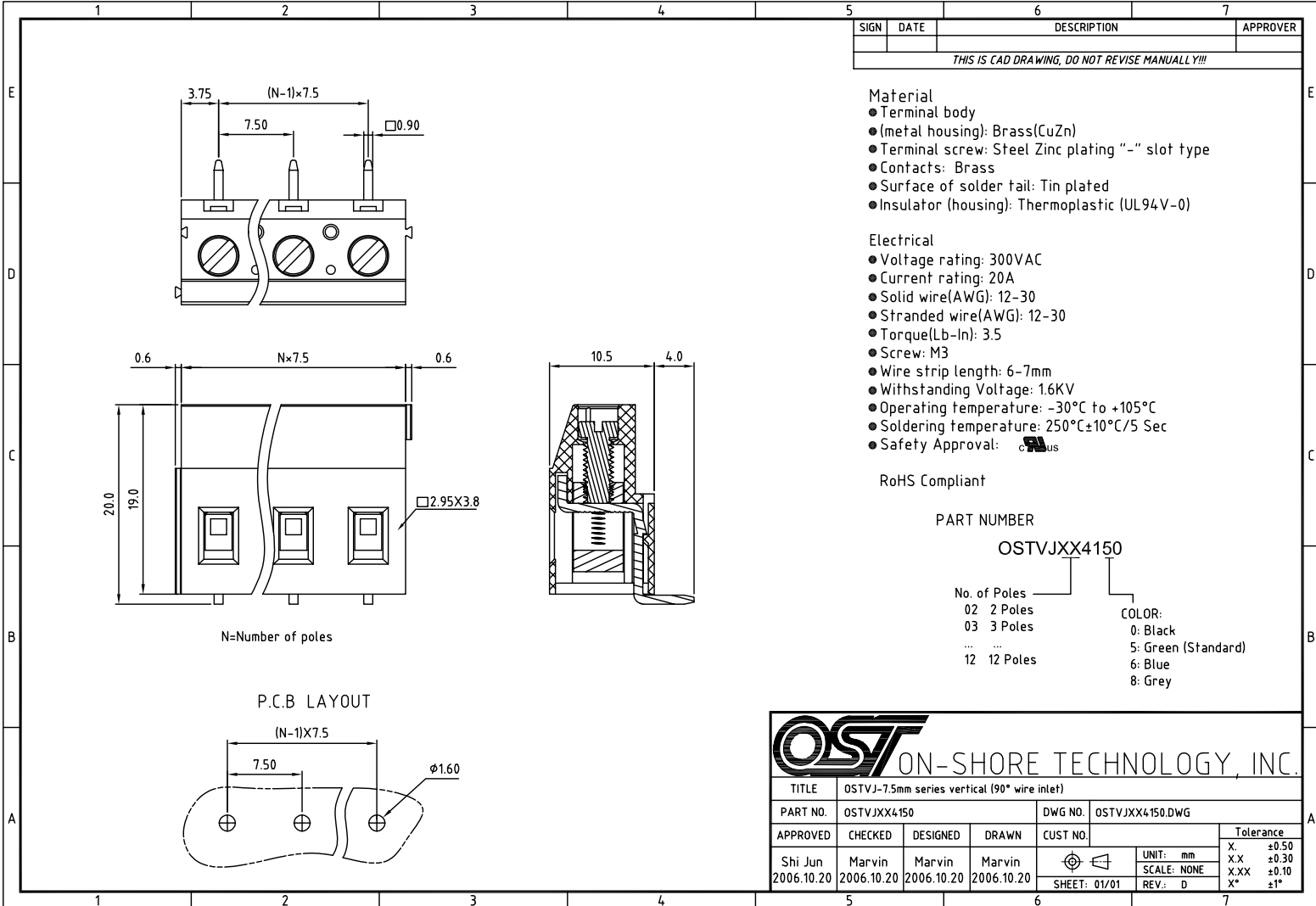
## Excellent Integrated System Limited

Stocking Distributor

Click to view price, real time Inventory, Delivery & Lifecycle Information:

[On-Shore Technology, Inc.](#)  
[OSTVJ024150](#)

For any questions, you can email us directly:  
[sales@integrated-circuit.com](mailto:sales@integrated-circuit.com)



SIGN	DATE	DESCRIPTION	APPROVER
THIS IS CAD DRAWING, DO NOT REVISE MANUALLY!!!			

- Material**
- Terminal body
  - (metal housing): Brass(CuZn)
  - Terminal screw: Steel Zinc plating "-" slot type
  - Contacts: Brass
  - Surface of solder tail: Tin plated
  - Insulator (housing): Thermoplastic (UL94V-0)
- Electrical**
- Voltage rating: 300VAC
  - Current rating: 20A
  - Solid wire(AWG): 12-30
  - Stranded wire(AWG): 12-30
  - Torque(Lb-In): 3.5
  - Screw: M3
  - Wire strip length: 6-7mm
  - Withstanding Voltage: 1.6KV
  - Operating temperature: -30°C to +105°C
  - Soldering temperature: 250°C±10°C/5 Sec
  - Safety Approval: us

RoHS Compliant

**PART NUMBER**  
OSTVJXX4150

No. of Poles	COLOR:
02 2 Poles	0: Black
03 3 Poles	5: Green (Standard)
...	6: Blue
12 12 Poles	8: Grey

<b>OST ON-SHORE TECHNOLOGY, INC.</b>					
TITLE	OSTVJ-7.5mm series vertical (90° wire inlet)				
PART NO.	OSTVJXX4150				
DWG NO.	OSTVJXX4150.DWG				
APPROVED	CHECKED	DESIGNED	DRAWN	CUST NO.	Tolerance
Shi Jun	Marvin	Marvin	Marvin		X: +0.50
2006.10.20	2006.10.20	2006.10.20	2006.10.20		X.X: +0.30
					X.XX: +0.10
					X*: ±1°
				SHEET: 01/01	REV.: D