

Excellent Integrated System Limited

Stocking Distributor

Click to view price, real time Inventory, Delivery & Lifecycle Information:

[Hirose Electric Co Ltd](#)
[ZX20-B-SLDC](#)

For any questions, you can email us directly:

sales@integrated-circuit.com

2007/03/07 18:11:17 TS.SAKAI ZAWA

DRAWING FOR REFERENCE: This is subject to change without notice

APPLICABLE STANDARD		USB2.0 SPECIFICATION		
RATING	OPERATING TEMPERATURE RANGE	0 °C TO +50° C	STORAGE TEMPERATURE RANGE	-20 °C TO +60 °C
	VOLTAGE	30V AC	OPERATING HUMIDITY RANGE	- % TO - %
	CURRENT 1) SIGNAL ONLY 2) POWER APPLY	1) 1 A/pin 2) 1.8 A/pin (PIN No.1,5) 0.5 A/pin (PIN No.2-4)	APPLICABLE CABLE	USB CABLE 1) SIGNAL : AWG 28 MAX 2) POWER : AWG 26 MAX

SPECIFICATIONS

ITEM	TEST METHOD	REQUIREMENTS	QT	AT
------	-------------	--------------	----	----

CONSTRUCTION

GENERAL EXAMINATION	VISUALLY AND BY MEASURING INSTRUMENT.	ACCORDING TO DRAWING.	X	X
MARKING	CONFIRMED VISUALLY.		X	X

ELECTRIC CHARACTERISTICS

CONTACT RESISTANCE	100 mA (DC OR 1000 Hz).	30 mΩ MAX.	X	X
INSULATION RESISTANCE	500 V DC.	100 MΩ MIN.	X	X
VOLTAGE PROOF	100 V AC FOR 1 min.	NO FLASHOVER OR BREAKDOWN.	X	X
CAPACITANCE	MEASURE ADJACENT TWO CONTACTS AT 1000±10 Hz AC VOLTAGE.	2 pF MAX.	X	—

MECHANICAL CHARACTERISTICS

INSERTION AND WITHDRAWAL FORCES	A MAXIMUM RATE OF 12.5 mm/min. MEASURED BY APPLICABLE CONNECTOR.	INSERTION FORCE 35 N MAX. WITHDRAWAL FORCE 8 N MIN.	X	—
MECHANICAL OPERATION	10000 TIMES INSERTIONS AND EXTRACTIONS. MATING SPEED - MECHANICALLY OPERATED : 500 CYCLES / h. - MANUALLY OPERATED : 200 CYCLES / h	1) CONTACT RESISTANCE: NO INCREASE OF MORE THAN 10 mΩ FROM INITIAL VALUE. 2) INSERTION FORCE 35 N MAX. WITHDRAWAL FORCE 8 N MIN. 3) NO DAMAGE, CRACK AND LOOSENESS OF PARTS.	X	—
VIBRATION	FREQUENCY 10 TO 55 Hz, SINGLE AMPLITUDE 0.75 mm, AT 2h FOR 3 DIRECTIONS, TOTAL 6 h.	1) NO ELECTRICAL DISCONTINUITY OF 1 μs. 2) NO DAMAGE, CRACK AND LOOSENESS OF PARTS.	X	—
RANDOM VIBRATION	FREQUENCY 50 TO 2000 Hz AT 15 min FOR 3 DIRECTIONS.		X	—
SHOCK	490 m/s ² DIRECTIONS OF PULSE 11 ms AT 3 TIMES FOR 6 DIRECTIONS, TOTAL 18 TIMES.		X	—

ENVIRONMENTAL CHARACTERISTICS

THERMAL SHOCK	TEMP -55 → 15 TO 35 → 85 → 15 TO 35 °C TIME 30 → 2 TO 3 → 30 → 2 TO 3 min. UNDER 10 CYCLES. (MATING APPLICABLE CONNECTOR)	1) CONTACT RESISTANCE: 70 mΩ MAX. 2) INSULATION RESISTANCE: 10 MΩ MIN. 3) NO DAMAGE, CRACK AND LOOSENESS OF PARTS.	X	—
HUMIDITY LIFE	TEMPERATURE -10 TO 65 °C, HUMIDITY 90 TO 98 % UNDER 7 CYCLES. (168 h) (MATING APPLICABLE CONNECTOR)	NO DAMAGE, CRACK AND LOOSENESS OF PARTS.	X	—
DRY HEAT	EXPOSED AT 85±2 °C, 96 h. (MATING APPLICABLE CONNECTOR)	NO DAMAGE, CRACK AND LOOSENESS OF PARTS.	X	—
COLD	EXPOSED AT -40±2 °C, 96 h. (MATING APPLICABLE CONNECTOR)	NO DAMAGE, CRACK AND LOOSENESS OF PARTS.	X	—
CORROSION SALT MIST	EXPOSED IN 5 % SALT WATER, 35 °C, FOR 48 ± 4 h.	NO HEAVY CORROSION.	X	—
RESISTANCE TO SOLDERING HEAT	TEMPERATURE : 350 ± 10 °C TIME : 5 ± 1 s AT SOLDERING PARTS	NO DAMAGE, CRACK AND LOOSENESS OF PARTS.	X	—

COUNT	DESCRIPTION OF REVISIONS	DESIGNED	CHECKED	DATE
0				

REMARK	APPROVED	AO. SUZUKI	07. 03. 06
	CHECKED	HK. TANAKA	07. 03. 06
	DESIGNED	TS. SAKAI ZAWA	07. 03. 06
	DRAWN	TS. SAKAI ZAWA	07. 03. 06

Unless otherwise specified, refer to USB2.0 or EIA364

Note QT:Qualification Test AT:Assurance Test X:Applicable Test	DRAWING NO.	ELC4-126085-00
--	-------------	----------------

HRS	SPECIFICATION SHEET	PART NO.	ZX20-B-5S-UNIT
	HIROSE ELECTRIC CO., LTD.	CODE NO.	CL242-0012-8-00

2007/03/07 18:11:18 TS.SAKAIZAWA

DRAWING FOR REFERENCE: This is subject to change without notice

APPLICABLE STANDARD		USB2.0 SPECIFICATION		
RATING	OPERATING TEMPERATURE RANGE	0 °C TO +50° C	STORAGE TEMPERATURE RANGE	-20 °C TO +60 °C
	VOLTAGE	-	OPERATING HUMIDITY RANGE	- % TO - %
	CURRENT	-	APPLICABLE CABLE	-

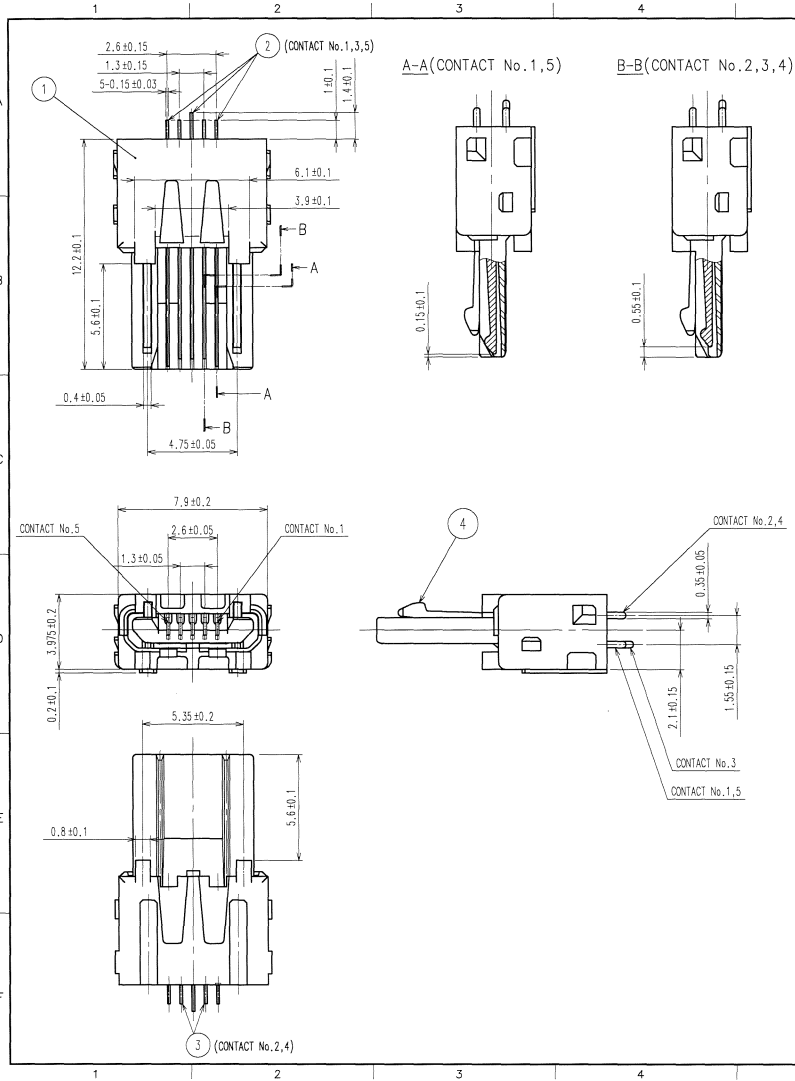
SPECIFICATIONS

ITEM	TEST METHOD	REQUIREMENTS	QT	AT
CONSTRUCTION				
GENERAL EXAMINATION	VISUALLY AND BY MEASURING INSTRUMENT.	ACCORDING TO DRAWING.	X	X
MARKING	CONFIRMED VISUALLY.		X	X

COUNT	DESCRIPTION OF REVISIONS	DESIGNED	CHECKED	DATE
0				
REMARK			APPROVED	AO. SUZUKI 07. 03. 06
			CHECKED	HK. TANAKA 07. 03. 06
			DESIGNED	TS. SAKAI ZAWA 07. 03. 06
			DRAWN	TS. SAKAI ZAWA 07. 03. 06
Note QT:Qualification Test AT:Assurance Test X:Applicable Test		DRAWING NO.	ELC4-126148-00	
HRS	SPECIFICATION SHEET	PART NO.	ZX20-B-SLDC	
	HIROSE ELECTRIC CO., LTD.	CODE NO.	CL242-0022-1-00	1/1

DRAWING FOR REFERENCE: This is subject to change without notice

TO



COUNT				DESCRIPTION OF REVISIONS				BY				CHKD				DATE			

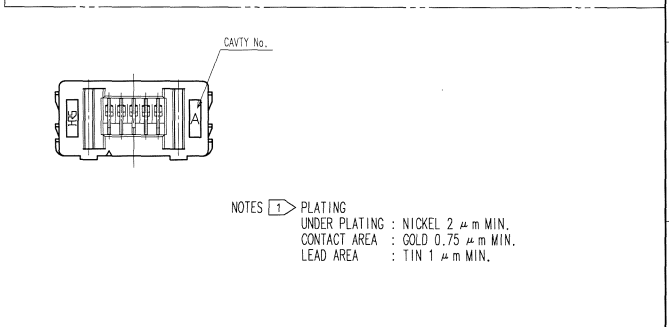
Fig - 1 PACKING SPECIFICATION -In the case of 4000 pcs-

1. STORED IN A TRAY (200pcs / tray)

2. Banded for a pack

3. STORED IN A CARTON BOX

SHOWN AS FOLLOWS;
 - Part No.
 - Code No.
 - QTY
 - Lot No.



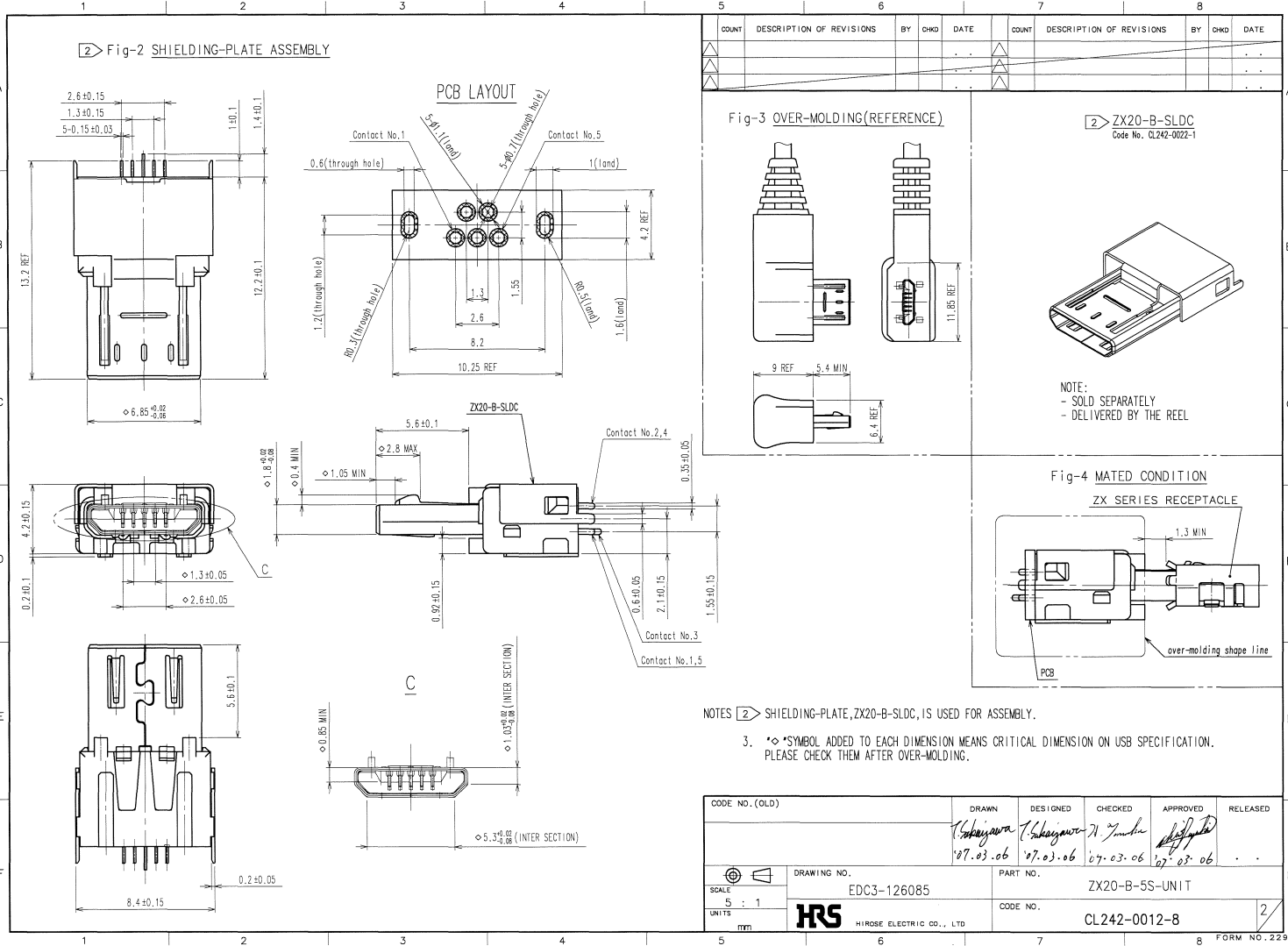
NOTES 1 PLATING
 UNDER PLATING : NICKEL 2 μm MIN.
 CONTACT AREA : GOLD 0.75 μm MIN.
 LEAD AREA : TIN 1 μm MIN.

2	COPPER ALLOY	1	4	STAINLESS STEEL		
1	LCP	UL94V-0, BLACK	3	COPPER ALLOY		
NO.	MATERIAL	FINISH, REMARKS	NO.	MATERIAL	FINISH, REMARKS	
CODE NO. (OLD)	DRAWN		DESIGNED	CHECKED	APPROVED	RELEASED
	T. Sakagawa		T. Sakagawa	N. J. ...		
	07.03.06		07.03.06	07.03.06	07.03.06	
SCALE	DRAWING NO.		PART NO.			
5 : 1	EDC3-126085		ZX20-B-5S-UNIT			
UNITS	HRS		CODE NO.			
mm	HIROSE ELECTRIC CO., LTD		CL242-0012-8			

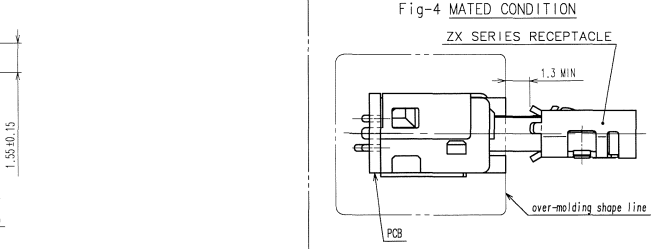
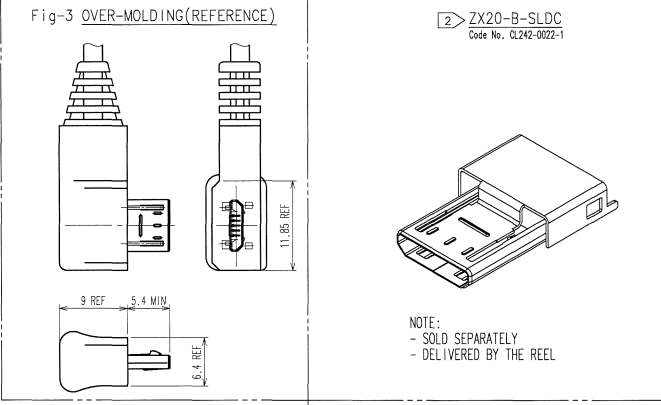
2007/03/07 18:11:19 TS.SAKAI.ZAWA

DRAWING FOR REFERENCE: This is subject to change without notice

TO



COUNT	DESCRIPTION OF REVISIONS	BY	CHKD	DATE	COUNT	DESCRIPTION OF REVISIONS	BY	CHKD	DATE

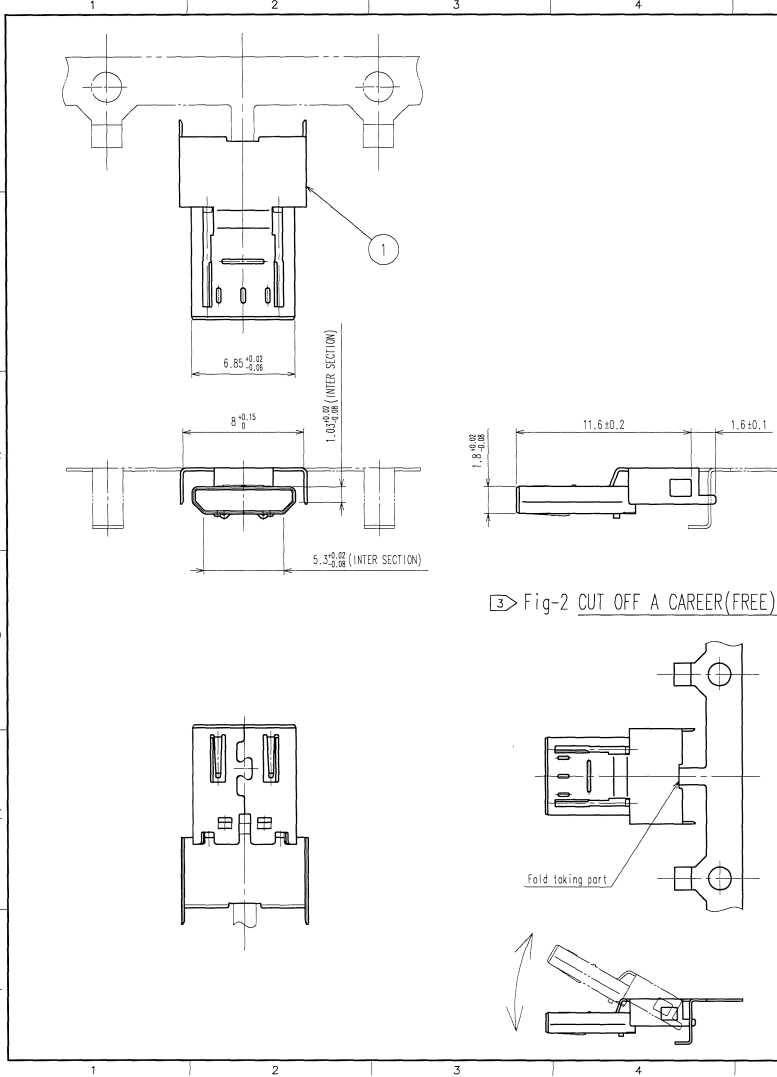


NOTE:
 - SOLD SEPARATELY
 - DELIVERED BY THE REEL

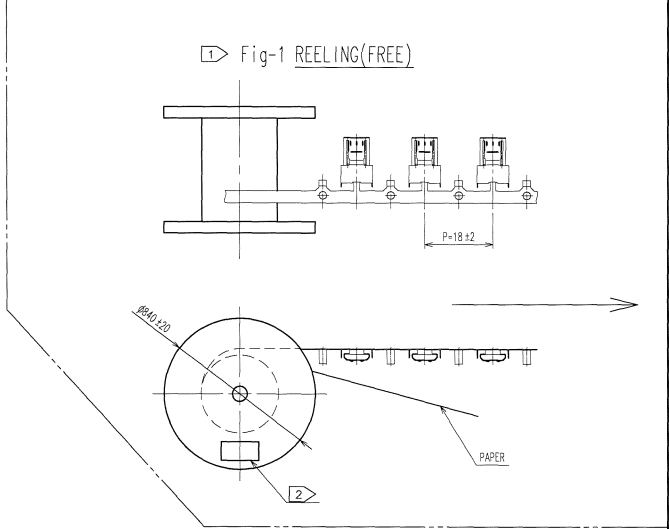
CODE NO. (OLD)	DRAWN	DESIGNED	CHECKED	APPROVED	RELEASED
	<i>Sakagawa</i>	<i>Sakagawa</i>	<i>N. Y. Maki</i>	<i>Sakagawa</i>	
	07.03.06	07.03.06	07.03.06	07.03.06	
DRAWING NO.	PART NO.		CODE NO.		
EDC3-126085	ZX20-B-5S-UNIT		CL242-0012-8		
SCALE	UNITS		FORM NO. 229		
5 : 1	mm		2		

DRAWING FOR REFERENCE: This is subject to change without notice

TO



COUNT	DESCRIPTION OF REVISIONS	BY	CHKD	DATE	COUNT	DESCRIPTION OF REVISIONS	BY	CHKD	DATE



3> Fig-2 CUT OFF A CAREER(FREE)

- NOTE 1> This is delivered by a reel.QTY:4000pcs.
 2> Shown on a reel and a box is ; *Part No.*, *Code No.*, *Lot No.*, *QTY*
 3> Cut off a career as shown in Fig-2.

CODE NO. (OLD)	DRAWN	DESIGNED	CHECKED	APPROVED	RELEASED
	<i>T. Sakayama</i>	<i>T. Sakayama</i>	<i>H. Yamada</i>	<i>[Signature]</i>	
	07.03.06	07.03.06	07.03.06	07.03.06	
DRAWING NO.	PART NO.		FINISH, REMARKS		
EDCS-126148	ZX20-B-SLDC				
SCALE	CODE NO.				
4 : 1	CL242-0022-1				
UNITS	HRS				
mm	HIROSE ELECTRIC CO., LTD				
			FORM NO. 229		