

Excellent Integrated System Limited

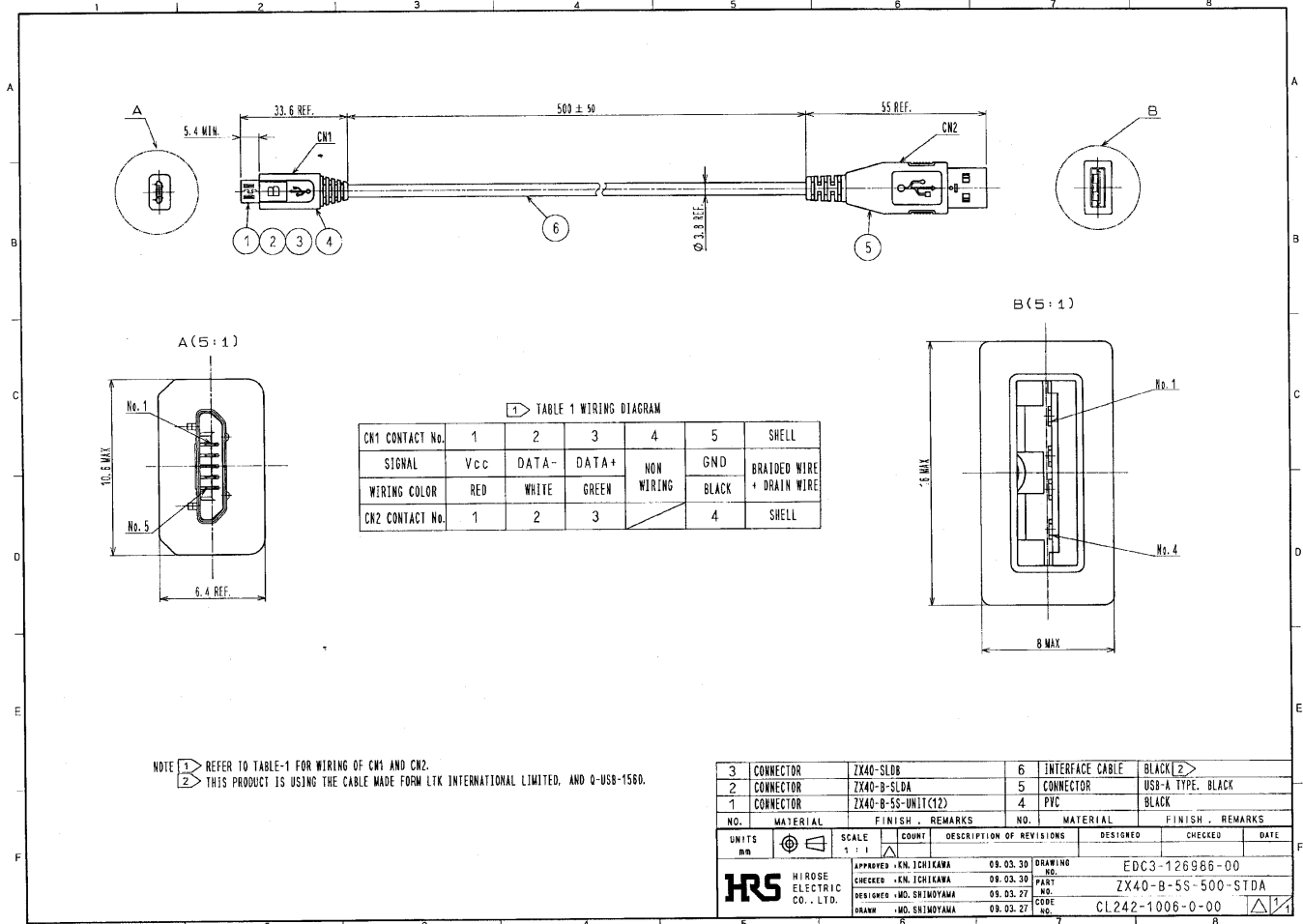
Stocking Distributor

Click to view price, real time Inventory, Delivery & Lifecycle Information:

[Hirose Electric Co Ltd](#)
[ZX40-B-5S-500-STDA](#)

For any questions, you can email us directly:

sales@integrated-circuit.com



NOTE 1 REFER TO TABLE-1 FOR WIRING OF CM1 AND CM2.
 2 THIS PRODUCT IS USING THE CABLE MADE FROM LTK INTERNATIONAL LIMITED, AND Q-US8-1560.

3	CONNECTOR	ZX40-SLDB	6	INTERFACE CABLE	BLACK
2	CONNECTOR	ZX40-B-SLDA	5	CONNECTOR	USB-A TYPE, BLACK
1	CONNECTOR	ZX40-B-5S-UNIT(C12)	4	PVC	BLACK

NO.	MATERIAL	FINISH	REMARKS	NO.	MATERIAL	FINISH	REMARKS	
UNITS	mm	SCALE	1:1	COUNT	DESCRIPTION OF REVISIONS	DESIGNED	CHECKED	DATE

APPROVED	KN. ICHIKAWA	09.03.30	DRAWING NO.	EDC3-126986-00
CHECKED	KN. ICHIKAWA	09.03.30	PART NO.	ZX40-B-5S-500-STDA
DESIGNED	MO. SHIMOTAYA	09.03.27	CODE NO.	CL242-1006-0-00
DRAWN	MO. SHIMOTAYA	09.03.27		



APPLICABLE STANDARD		USB2.0 SPECIFICATION AND MICRO-USB CABLE AND CONNECTORS SPECIFICATION.		
OPERATING TEMPERATURE RANGE	-30°C TO +80°C	STORAGE TEMPERATURE RANGE	-30°C TO +60°C	
RATING	VOLTAGE	AC 30V	CURRENT	
			SIGNAL ONLY 1.0 A/pin POWER APPLY 1.8 A/pin (PIN No.1, No.5) 0.5 A/pin (PIN No.2, No.4)	
SPECIFICATIONS				
ITEM	TEST METHOD	REQUIREMENTS	QT	AT
CONSTRUCTION				
GENERAL EXAMINATION	VISUALLY AND BY MEASURING INSTRUMENT	ACCORDING TO DRAWING.	X	X
MARKING	CONFIRMED VISUALLY.		X	X
ELECTRICAL CHARACTERISTICS				
VOLTAGE PROOF	100 V AC FOR 1 min.	NO FLASHOVER OR BREAKDOWN.	X	X
CONTACT RESISTANCE	100 mA D.C.	230 mΩ MAX. Δ	X	X
REVISIONS				
COUNT	DESCRIPTION OF REVISIONS	DESIGNED	CHECKED	DATE
1	DIS-E-002936	MO. SHIMOYAMA	KN. ICHIKAWA	09.09.16
REMARK				
A connector independent performance is based on CL242-0002-4.				
HIROSE will not guarantee the performance on these specifications in case this product will be mated with the others which is not HIROSE'S.				
Unless otherwise specified, refer to USB2.0 or EIA 364.				
Note: QT:Qualification Test AT:Assurance Test X:Applicable Test.				
HIROSE		DRAWING NO. ELC4-126986-00		
SPECIFICATION SHEET		PART NO. ZX40-B-5S-500-STDA		
HIROSE ELECTRIC CO., LTD.		CODE NO. CL242-1006-0-00 Δ		
		1/1		