

Excellent Integrated System Limited

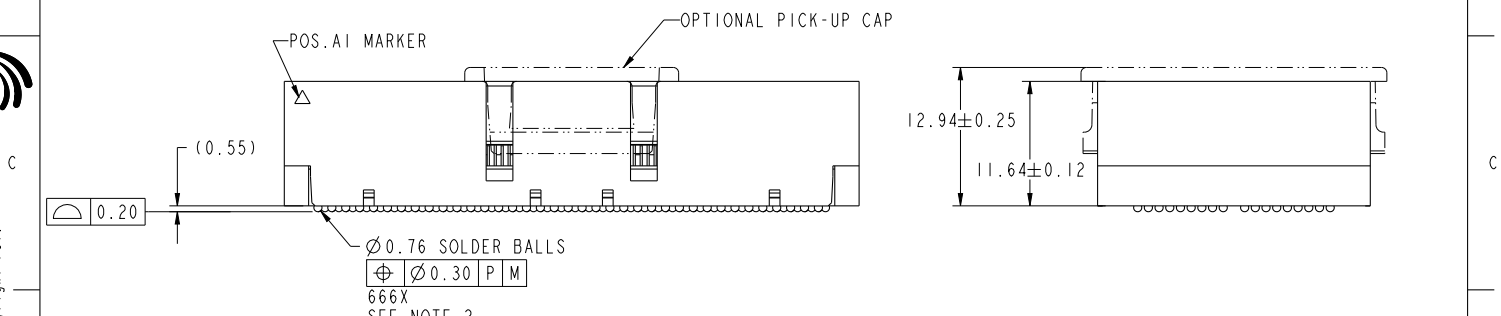
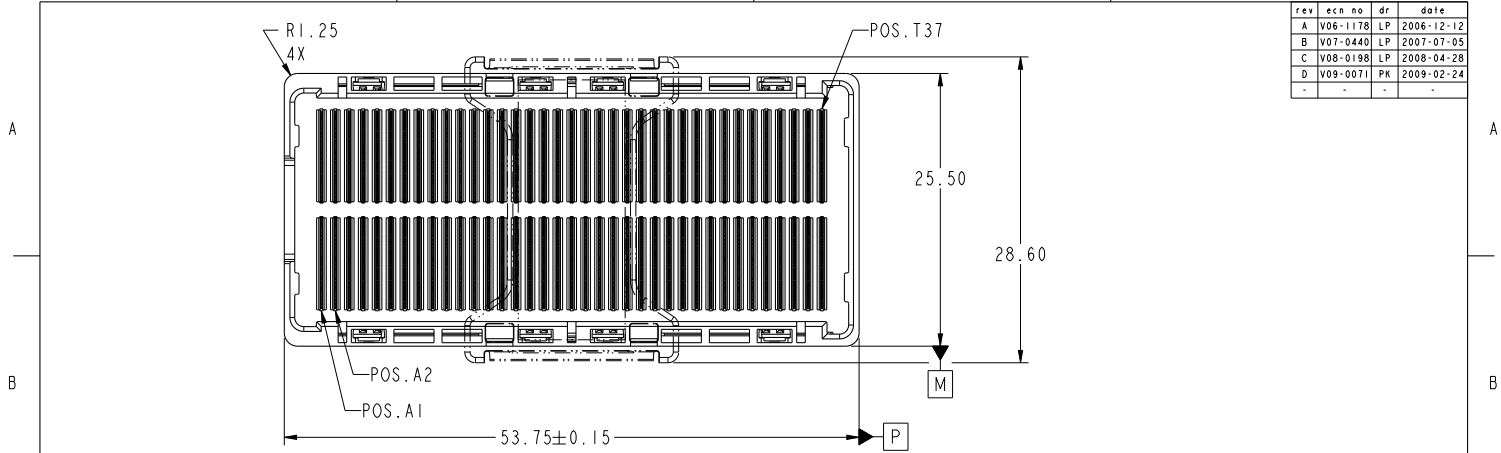
Stocking Distributor

Click to view price, real time Inventory, Delivery & Lifecycle Information:

[FCI](#)
[10026804-001LF](#)

For any questions, you can email us directly:
sales@integrated-circuit.com

rev	ec n no	dr	date
A	V06-1178	LP	2006-12-12
B	V07-0440	LP	2007-07-05
C	V08-0198	LP	2008-04-28
D	V09-0071	PK	2009-02-24
-	-	-	-



spec ref	-	dr	Bill Lin	2010/02/02	projection	mm	size	A4	scale	1:1	
tolerance std	ASME Y14.5	eng	Nickor Zuo	2011/05/26			ec n no	ELX-DG-003943-1			
TOLERANCES UNLESS OTHERWISE SPECIFIED		chr	Alex Cao	2011/06/24				product family	GIG-Array	rel level	Released
surface	ASME Y14.5	appr	Pei-Ming Zheng	2011/06/27	GIG-Array		rel level	Released		rev	E
linear	0.X ±0.30			GIG-Array 10mm PLUG ASSY. 296 SIG. POS.		10026804		Product - Customer Drw			
linear	0.XX ±0.10										
linear	0.XXX ±0.05										
angular	0° ±2°	www.fci.com		cat. no.	-	sheet 1 of 5					

Prod File - REV C - 2009-08-09

1

2

3

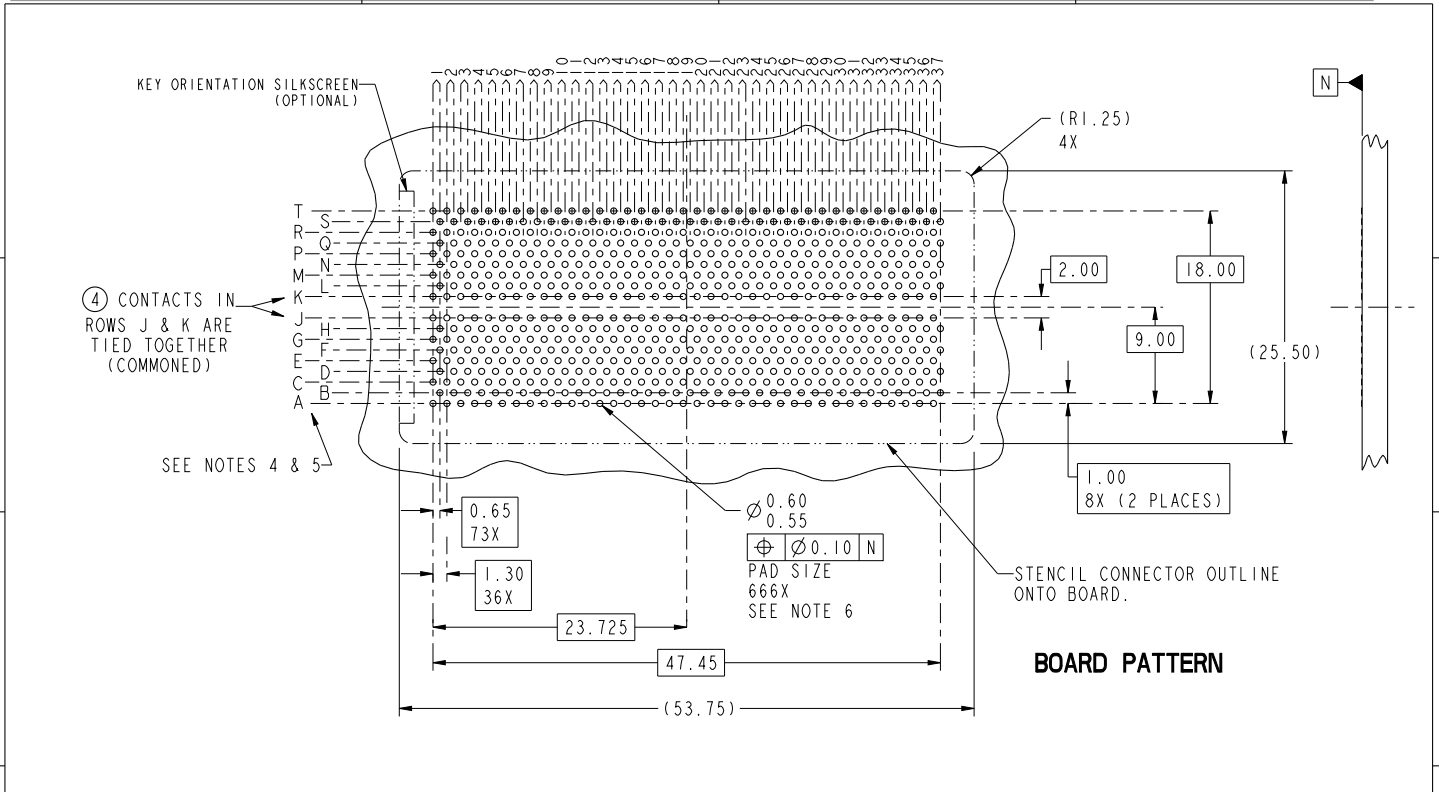
PDS: Rev :E

STATUS:Released

Printed: Jun 27, 2011



Copyright FCI.



spec ref	-			dr	Bill Lin	2010/02/02	projection	mm	size	A4	scale	1:1								
tolerance std	ASME Y14.5			eng	Nickor Zuo	2011/05/26			ec n no	ELX-DG-003943-1										
TOLERANCES UNLESS OTHERWISE SPECIFIED				chr	Alex Cao	2011/06/24				product family	GIG-Array	rel level	Released							
surface		linear	0.X	±0.30																
ASME Y14.5		linear	0.XX	±0.10																
		angular	0°	±2°																

Copyright FCI.

A

B

C

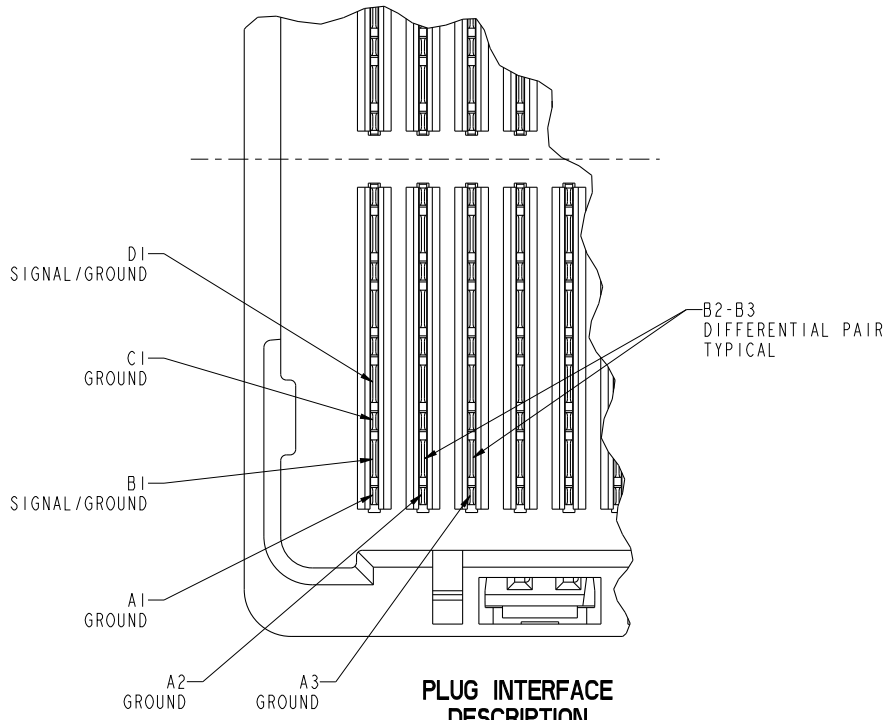
D

A

B

C

D



PLUG INTERFACE DESCRIPTION



Copyright FCI.

spec ref		-		dr	Bill Lin	2010/02/02	projection	mm		size	A4	scale	1:1		
tolerance std		ASME Y14.5		eng	Nickor Zuo	2011/05/26				ec n no		ELX-DG-003943-1			
TOLERANCES UNLESS OTHERWISE SPECIFIED		chr	Alex Cao	2011/06/24	product family					GIG-Array		rel level		Released	
surface			linear	0.X	±0.30		title		GIG-Array		dwg no		10026804	rev	E
ASME Y14.5			0.XX	±0.10	10mm PLUG ASSY. 296 SIG. POS.		cat. no.		-		Product - Customer Drw		sheet 3 of 5		
			0.XXX	±0.05	www.fci.com		PDS: Rev :E		STATUS:Released		Printed: Jun 27, 2011				
		angular	0°	±2°											

Prod File - REV C - 2009-08-09

1

2

3

PDS: Rev :E

STATUS:Released

Printed: Jun 27, 2011

A

B

C

D

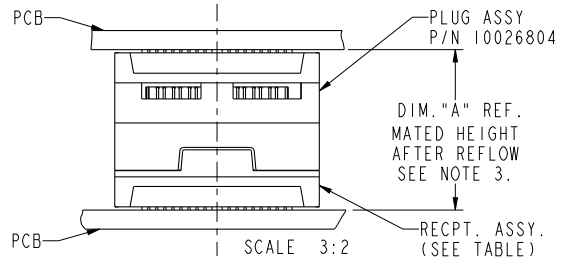
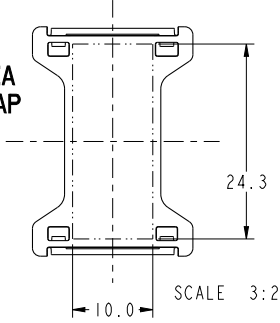
A

B

C

D

FLAT AREA
PICK-UP CAP



END VIEW OF MATED CONNECTORS

DIM. "A"	RECPT. ASSY. P/N
17	55701
22	10032376
27	55733



Copyright FCI.

spec ref	-			dr	Bill Lin	2010/02/02	projection	mm	size	A4	scale	1:1	
tolerance std	ASME Y14.5			eng	Nickor Zuo	2011/05/26			ecn no	ELX-DG-003943-1			
TOLERANCES UNLESS OTHERWISE SPECIFIED			chr	Alex Cao	2011/06/24	product family				GIG-Array	rel level	Released	
surface		linear	0.X	±0.30		title GIG-Array 10mm PLUG ASSY. 296 SIG. POS.	product family GIG-Array	product GIG-Array	dwg no 10026804	rev E	cat. no.		-
			0.XX	±0.10							Product - Customer Drw	sheet 4 of 5	
ASME Y14.5		angular	0°	±2°									

Print File - REV C - 2009-08-09

1

2

3

PDS: Rev :E

STATUS:Released

Printed: Jun 27, 2011

PRODUCT NUMBER	SOLDER BALL COMPOSITION	CONTACT PLATING PERFORMANCE LEVEL
10026804-001	STANDARD (EUTECTIC)	PERFORMANCE-BASED PLATING, QUALIFIED TO MEET THE REQUIREMENTS OF FCI PRODUCT SPECIFICATION GS-12-192, INCLUDING TELCORDIA CENTRAL OFFICE
10026804-001LF	LEADFREE	

NOTES:

- ① MAT'L:
HOUSING: LCP
CONTACT: COPPER ALLOY
PLATING (CONTACT): Au OVER Ni.
UL RATING: 94 V-0
- ② SOLDER BALLS WILL NOT BE PERFECT SPHERICAL SHAPE DUE TO REFLOW ATTACHMENT.
- ③ MATED HEIGHT EFFECTED BY CUSTOMERS' PCB PAD SIZE, PLATING, SOLDER REFLOW PROFILE & SOLDER PASTE.
- ④ CONTACTS IN ROWS A,C,E,G,J,K,M,P,R AND T ARE SINGLE BEAM CONTACTS, TYPICALLY USED AS GROUND PINS. (NOTE: CONTACTS IN ROWS J & K ARE TIED TOGETHER (COMMONED))
- ⑤ CONTACTS IN ROWS B,D,F,H,L,N,O AND S ARE DUAL BEAM CONTACTS, TYPICALLY USED AS SIGNAL PINS.

NOTES CONTINUED

- ⑥ SPECIFIED POSITIONAL TOLERANCE DEFINES PAD TO PAD LOCATION WITHIN LAND PATTERN. POSITIONAL TOLERANCE OF LAND PATTERN TO FUDICIAL MARKS OR PCB DATUMS SHALL BE DEFINED BY CUSTOMER. FOR RECOMMENDED PRODUCT APPLICATION AND PCB DESIGN DETAILS, SEE DOC. NO. GS-20-016.
- ⑦ FOR PROPER APPLICATION FOLLOW FCI APPLICATION SPECIFICATION GS-20-033 LEADFREE SOLDER BALLS WILL NOT SOLDER PROPERLY IN A LEADED SOLDER PROCESS DUE TO A HIGHER REFLOW TEMPERATURE. LEADFREE PRODUCT IS THEREFORE NOT BACKWARDS COMPATIBLE WITH LEADED OR SOME SOLDERING APPLICATIONS. REFERENCE FCI APPLICATION SPECIFICATION.
- ⑧ THIS PRODUCT MEETS THE EUROPEAN UNION DIRECTIVES AND OTHER COUNTRY REGULATIONS AS DESCRIBED IN GS-22-008. PRODUCT MEETING WITH THIS DIRECTIVE IS IDENTIFIED IN THE LOT CODE NUMBER MARKED ON EACH PART BY HAVING AN "X" IN THE SEVENTH CHARACTER POSITION.



Copyright FCI.

spec ref	-			dr	Bill Lin	2010/02/02	projection	mm	size	A4	scale	1:1
tolerance std	ASME Y14.5			eng	Nickor Zuo	2011/05/26		← →	ecn no	ELX-DG-003943-1		
TOLERANCES UNLESS OTHERWISE SPECIFIED				chr	Alex Cao	2011/06/24			product family	GIG-Array	rel level	Released
surface	3/2	linear	0.X	±0.30		GIG-Array	10mm PLUG ASSY. 296 SIG. POS.	dwg no	10026804	rev	E	
			0.XX	±0.10								
			0.XXX	±0.05								
ASME Y14.5		angular	0°	±2°	www.fci.com	cat. no.	-	Product - Customer Drw	sheet 5 of 5			

Prod File - REV C - 2009-08-09

1

2

3

PDS: Rev :E

STATUS:Released

Printed: Jun 27, 2011