

Excellent Integrated System Limited

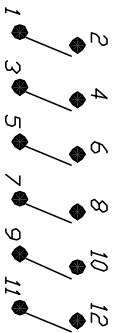
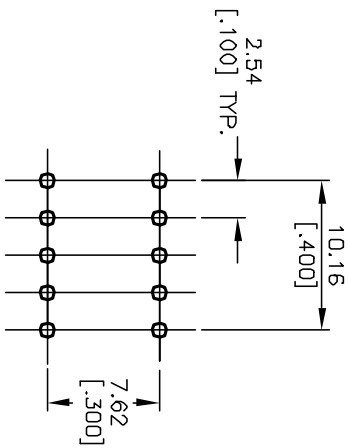
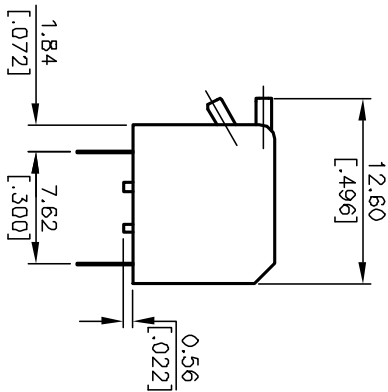
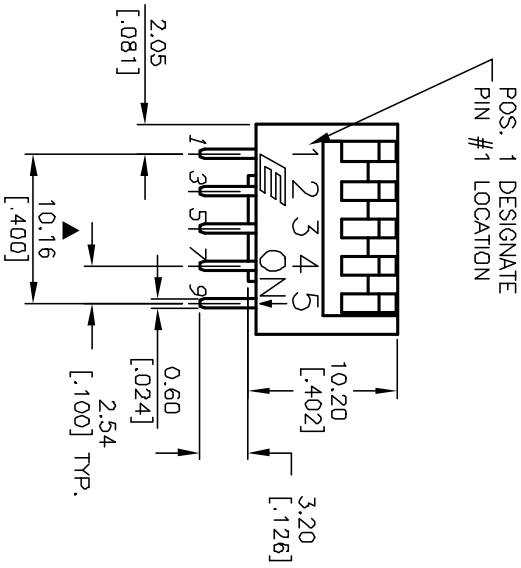
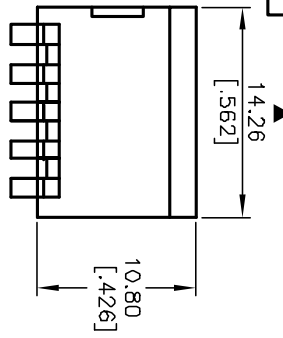
Stocking Distributor

Click to view price, real time Inventory, Delivery & Lifecycle Information:

[E-Switch](#)
[KAP1105E](#)

For any questions, you can email us directly:

sales@integrated-circuit.com



CONTACT CONFIGURATION

*K(Pos. 1 Denotes Pin No. 1)

RECOMMEND P.C.B. LAYOUT -FOR 5 POS.

- NOTES:
1. ALL DIMENSIONS IN MM
 2. GENERAL TOLERANCE: X.X=±0.4
X.XX=±0.25
 3. TERM. NOS. FOR REFERENCE ONLY.
 4. CONTACT RATINGS: 25mA @24VDC.
 5. MATERIAL: (TERMINALS/CONTACTS):
PHOSPHOR BRONZE w/Gold Plate over
Nickel Plate
 6. INSULATION RESISTANCE:
100Mega-OHMS min @500VDC
 7. CONTACT RESISTANCE (INITIAL):
50mili-OHMS @2-4VDC @100mA
 8. OPERATING FORCE: 1000gf max.
 9. TRAVEL: 2mm typical
 10. SWITCHES SUPPLIED IN DISPENSING TUBES
WITH ALL POLES IN THE "OFF" POSITION.
 11. ▲ DENOTES CRITICAL PARAMETER.

REV.	ECN No.	DESCRIPTION	DATE	CHKD
A	13130	RELEASED FOR PRODUCTION	5/12/03	

TITLE				
KAP1105E				
E-SWITCH®				
SCALE	DATE	DR	DWG	REV
2:1	5/12/03	AR	N411052	A

THE INFORMATION CONTAINED IN THIS DOCUMENT IS PROPRIETARY TO E-SWITCH AND IS NOT TO BE COPIED OR TRANSFERRED