

Excellent Integrated System Limited

Stocking Distributor

Click to view price, real time Inventory, Delivery & Lifecycle Information:

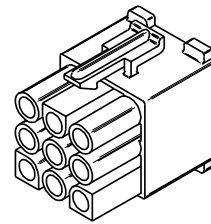
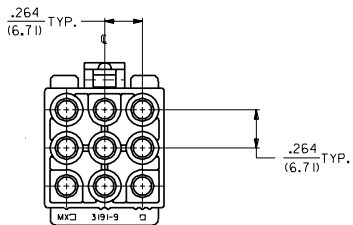
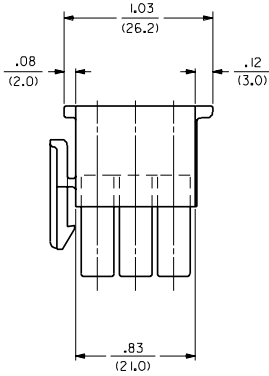
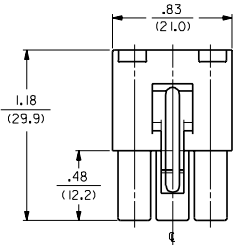
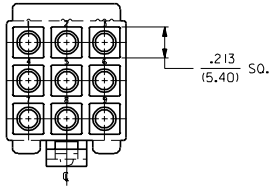
[Molex Connector Corporation](#)

[19-09-1096](#)

For any questions, you can email us directly:

sales@integrated-circuit.com

13 12 11 10 9 8 7 6 5 4 3 2 1



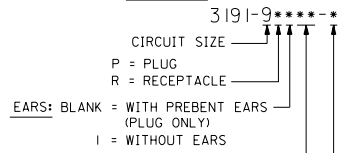
RECEPTACLE

DIMENSIONS SHOWN METRIC INCH UNLESS OTHERWISE SPECIFIED () TOLERANCES UNLESS SHOWN		REVISE ONLY ON CAD SYSTEM	
3 PLACE ± .010	---	TITLE .093/(2.36) HOUSING, PLUG AND RECEPTACLE, 9 CKT., .264/(6.70) CTRS.	
2 PLACE ± .014	± 0.25	MOLEX INCORPORATED SHEET NO. DATE 2 8/ 2/89	
1 PLACE ---	± 0.35	SEE CHART	
DRAFT WHERE APPLICABLE, MUST REMAIN WITHIN DIMENSIONS		PART NO. DRG. NO. SD-3191-9*	
DRG. BY: GEP		FILE NAME: 531919A2	
APP'D. BY: RAS		SCALE: 2 : 1	
LTR. REVISIONS		NO P.S.1	

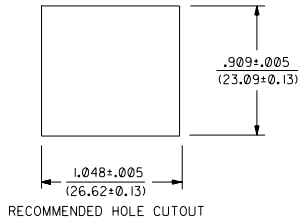
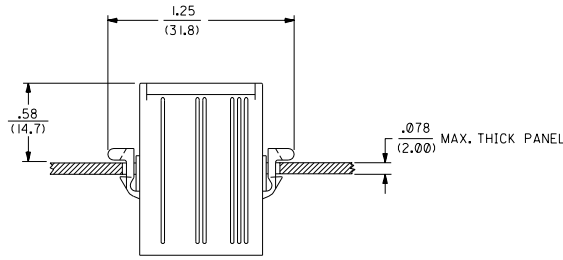
13 12 11 10 9 8 7 6 5 4 3 2 1

PLUG		RECEPTACLE	
PART NO.	ENG. NO.	PART NO.	ENG. NO.
19-09-2098	3191-9P	19-09-1099	3191-9R1
19-09-2099	3191-9P1	19-09-1096	3191-9R1-201
19-09-2097	3191-9P-201		
19-09-2096	3191-9P1-201		

LEGEND:



COLOR: BLANK = NATURAL COLOR
 AM=AMBER BK=BLACK BU=BLUE
 BN=BROWN CY=GRAY GN=GREEN
 OR=ORANGE RD=RED YW=YELLOW
 COLORS AVAILABLE ONLY IN 94V-2 MATERIAL
 MATERIAL: BLANK=NYLON TYPE 6/6, 94V-2
 201=NYLON TYPE 6/6, 94V-0



NOTES:

1. THESE HOUSINGS FOR USE WITH MOLEX .093/(2.36) DIAMETER SERIES TERMINALS.

DIMENSIONS SHOWN (METRIC) INCH UNLESS OTHERWISE SPECIFIED () TOLERANCES: ANGULAR ± .005		REVISIONS	DATE	BY	CHKD.	APP'D.	SCALE	FILE NAME	THIS DRAWING CONTAINS INFORMATION THAT IS PROPRIETARY TO MOLEX, INC. AND SHOULD NOT BE USED WITHOUT WRITTEN PERMISSION. (CP)
1 PLACE ± .010	---	J	SEE SHT. 1					SD-3191-9*	
2 PLACE ± .014	± 0.25								
3 PLACE ---	± 0.35								
DRAWING DIMENSIONS MUST REMAIN WITHIN DIMENSIONS									
MOLEX INCORPORATED									
SEE CHART									
MATERIAL: NYLON TYPE 6/6, 94V-2									