

Excellent Integrated System Limited

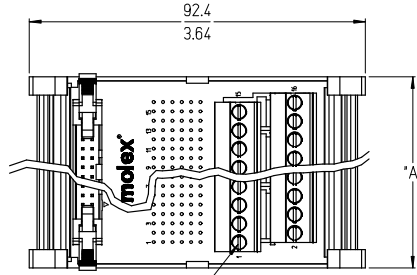
Stocking Distributor

Click to view price, real time Inventory, Delivery & Lifecycle Information:

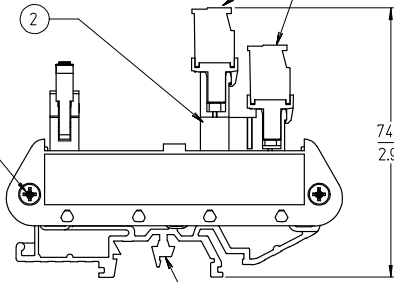
[Molex Connector Corporation](#)
[39170-1114](#)

For any questions, you can email us directly:
sales@integrated-circuit.com

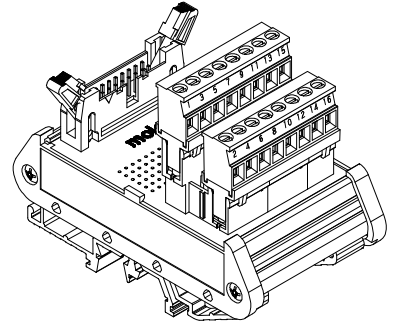
10 9 8 7 6 5 4 3 2 39170



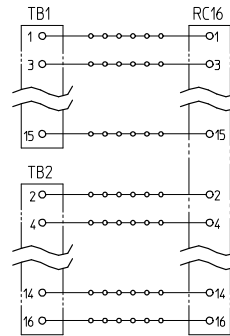
(B) SEE NOTE 5



(B) SEE NOTE 4



16 POSITION SHOWN



TYPICAL SCHEMATIC
(16 POSITION SHOWN)

NO. OF CIRCUITS	DIM. "A"		MATERIAL NUMBER
14	50.8	[2.00]	39170-1114
16	53.3	[2.10]	39170-1116
20	61.0	[2.40]	39170-1120
26	76.2	[3.00]	39170-1126
34	95.0	[3.74]	39170-1134
40	111.5	[4.39]	39170-1140
50	135.6	[5.34]	39170-1150

NOTES:

1. MATERIAL: SEE TABLE
2. FINISHES: SEE TABLE
3. MATES WITH RIBBON CABLE
4. END CAP MOUNT SCREW TORQUE: 0.5 N-m (4.4 lbf-in) MINIMUM
0.6 N-m (5.3 lbf-in) MAXIMUM
5. TERMINAL BLOCK SCREW TORQUE: 0.8 N-m (7.1 lbf-in)
6. ASSEMBLY ROHS COMPLIANCE NOT REQUIRED.

- (B) ADD SCREW TORQUE
- (B) ADD SCREW TORQUE

ITEM	QTY.	DESCRIPTION	MATERIAL	FINISH
3	2	DIN RAIL ADAPTOR UNIT	THERMOPLASTIC	BLACK
2	1	RIBBON CABLE TO 5.08 HEADER, PC BOARD ASSY.	-	-
1	2	5.08 PLUGGABLE BTS	SEE SD-39860-004	BLACK

REV	DESCRIPTION	DATE	BY	APPR
1	ADD SCREW TORQUE	2007/03/12	DR: JACQUELINE	APPR: JACQUELINE
2	ADD SCREW TORQUE	2007/03/14	DR: JACQUELINE	APPR: JACQUELINE
3	ADD SCREW TORQUE	2007/03/15	DR: JACQUELINE	APPR: JACQUELINE

GENERAL TOLERANCES (UNLESS SPECIFIED)	
	MM/IN
4 PLACES	± .005
3 PLACES	± .005
2 PLACES	± 0.13 ± .01
1 PLACE	± 0.3 ± .01
ANGULAR ± 2 °	

DIMENSION STYLE	
MM/IN	
DRAWN BY	C. YORK
DATE	2004/11/10
CHECKED BY	R. STONE
DATE	2004/11/16
APPROVED BY	G. ROBERTSON
DATE	2004/11/16

SCALE	DESIGN UNITS	THIRD ANGLE PROJECTION
1:1	INCH	

TITLE: DIN RAIL INTERFACE MODULE, RIBBON CABLE TO 5.08MM VERT EURO PLUG

MATERIAL NO. SD-39170-006

DOCUMENT NO. SD-39170-006

SHEET NO. 1 OF 1