

Excellent Integrated System Limited

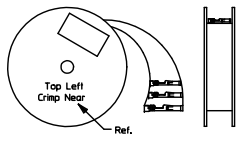
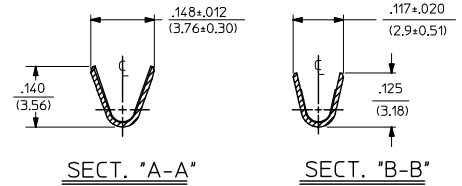
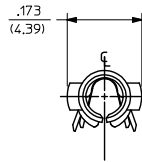
Stocking Distributor

Click to view price, real time Inventory, Delivery & Lifecycle Information:

[Molex Connector Corporation](#)
[02-09-5143](#)

For any questions, you can email us directly:
sales@integrated-circuit.com

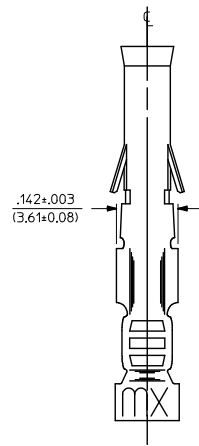
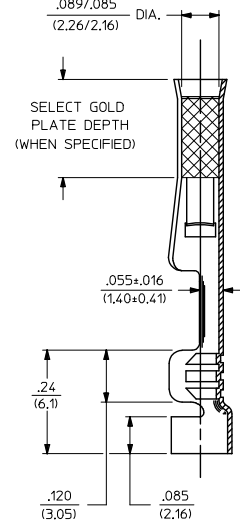
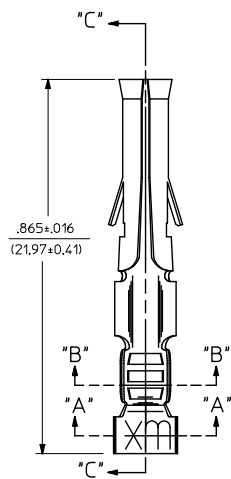
PART NO.	ENG. NO.
02-09-1119	1381-A(P901L)
02-09-1117	1381-A(P901)
02-09-1115	1381-A(P901I)
02-09-5133	1381-A(P591L)
02-09-5130	1381-A(P591)
02-09-5142	1381-A(P550L)
02-09-5143	1381-A(550)



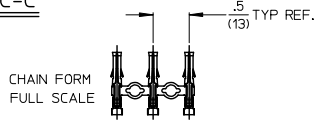
LEGEND

1381-A(***)

- P = PREPLATE
- BLANK = POSTPLATE
- FORM BLANK = STD. CHAIN
- 1 = STD. CHAIN WITH INTERLEAF PAPER
- L = LOOSE
- FINISH CODE



SECT. "C-C"



NOTES:

1. MATERIAL: BRASS
2. FINISH:
 - 901 HOT TIN DIP .000020/(0.00051) MIN.
 - 591 SELECT GOLD PLATE .000050/(0.00127) MIN. IN CONTACT AREA. OVER .000050/(0.00127) MIN. NICKEL OVERALL WITH .000010/(0.00025) MAX. GOLD FLASH OVERALL.
 - 550 SELECT GOLD PLATE .000015/(0.00038) MIN. IN CONTACT AREA. OVER .000030/(0.00076) MIN. NICKEL OVERALL WITH .000010/(0.00025) MAX. GOLD FLASH OVERALL.
3. PRODUCT SPECIFICATION PS-43660-9999.
4. PACKAGING INFORMATION: NOT AVAILABLE
5. TERMINAL FOR USE WITH .093/(2.36) SERIES HOUSINGS AND WILL ACCEPT 18-22 AWG WIRE
6. INSERTION FORCE: 3.5 LBS. MAX. WHEN TERMINAL IS INSERTED INTO AN .093 SERIES HOUSING.
7. TERMINAL RETENTION: 20 LBS. MIN. FROM HOUSING.

CORRECT TOLERANCE DEC NO: JCP2014-4764 DRAWN: JDOX 2014/05/15 CHKD: KIPPER 2014/05/15 APPROV: SMITH 2014/05/27	QUALITY SYMBOLS ▽=0 ▽=0 ▽=0	GENERAL TOLERANCES (UNLESS SPECIFIED)		DIMENSION STYLE		SCALE	DESIGN UNITS	THIRD ANGLE PROJECTION
		mm	INCH	IN/MM		6:1	INCH	☉
REV BW1	4 PLACES	± .010	± .014	DRAWN BY	DATE	TITLE CRIMP TERMINAL, FEMALE .093/(2.36) DIA. 18-22 AWG molex DOCUMENT NO. SD-1381-* SHEET NO. 1 OF 1		
	3 PLACES	± .010	± .014	CHECKED BY	DATE			
	2 PLACES	± 0.25	± .014	RW	1987/11/06			
	1 PLACE	± 0.35	± .014	APPROVED BY	DATE			
	0 PLACE	±	±	RAS	1987/11/06	MATERIAL NO. SEE CHART		
DRAFT WHERE APPLICABLE MUST REMAIN WITHIN DIMENSIONS								
THIS DRAWING CONTAINS INFORMATION THAT IS PROPRIETARY TO MOLEX INCORPORATED AND SHOULD NOT BE USED WITHOUT WRITTEN PERMISSION								