

## Excellent Integrated System Limited

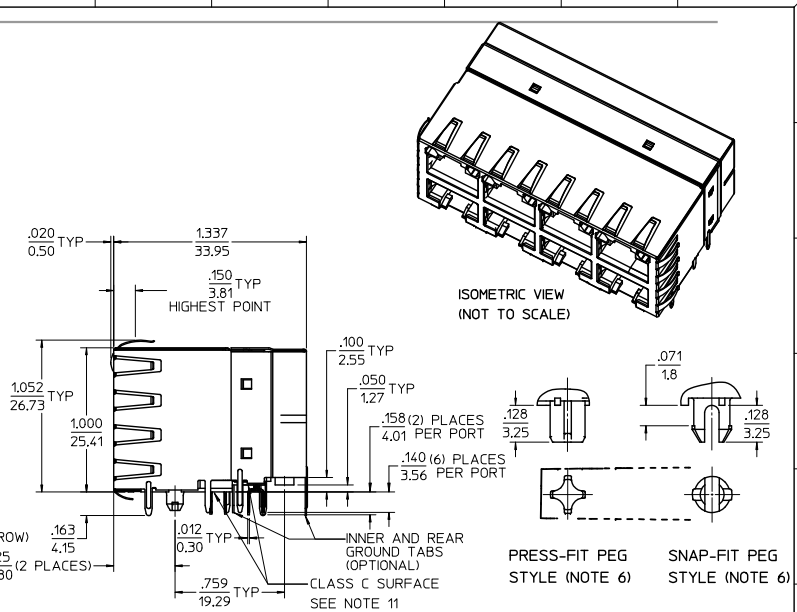
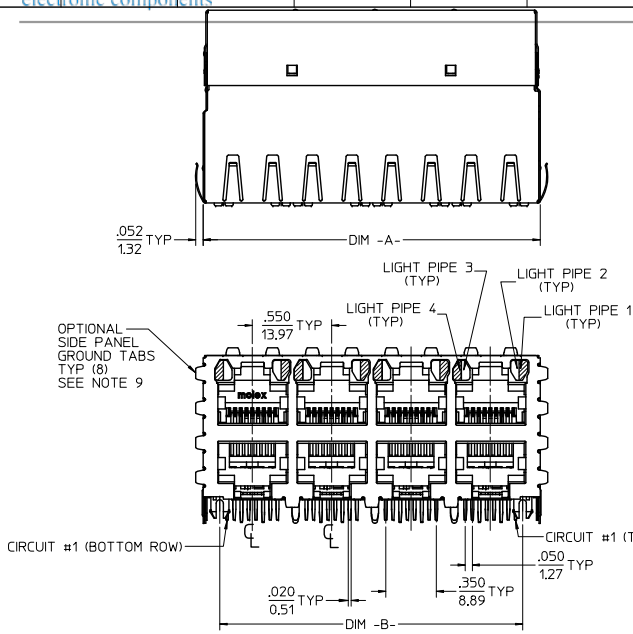
Stocking Distributor

Click to view price, real time Inventory, Delivery & Lifecycle Information:

[Molex Connector Corporation](#)  
[0441700001](#)



For any questions, you can email us directly:

[sales@integrated-circuit.com](mailto:sales@integrated-circuit.com)



- NOTES:**
- MATERIAL:**  
HOUSING: POLYESTER(PBT), GLASS FILLED, UL94V-0, COLOR: BLACK  
LIGHT PIPES: POLYCARBONATE, UL-94HB, COLOR: CLEAR  
TERMINALS: PHOSPHOR BRONZE  
SHIELD: BRASS
  - FINISH:**  
**TERMINALS:**  
SELECT GOLD IN CONTACT AREA: 50 MICROINCHES / 127 MICROMETERS MIN.,  
SELECT TIN IN FC TAIL AREA: 100 MICROINCHES / 254 MICROMETERS MIN.,  
WITH OVERALL NICKEL UNDERPLATE: 50 MICROINCHES / 127 MICROMETERS MIN.,  
SHIELD:  
100 MICROINCHES / 254 MICROMETERS NICKEL OVER 50 MICROINCHES / 127 MICROMETERS COPPER UNDERPLATE PCB GROUND TABS DIPPED IN TIN
  - PRODUCT SPECIFICATION:** PS-44050-003.
  - PACKAGING SPECIFICATION:** CONNECTOR PACKAGED IN THERMOFORMED TRAYS PER PK-44170-003.
  - APPLICATION SPECIFICATION:** AS-43860-001
  - CONNECTORS AVAILABLE WITH EITHER SNAP-FIT OR PRESS-FIT PEGS.**
  - CONFORMS TO FCC REGULATION PART 68.5 FOR MODULAR JACKS.**
  - PCB LAYOUT AND PANEL CUT-OUT SHOWN ON SHEET (2) OF (2).**
  - AVAILABLE WITH THE (8) PANEL GROUND TABS REMOVED ON EACH SIDE FOR SIDE TO SIDE STACKABILITY.**
  - TERMINAL LENGTHS MAY BE DIFFERENT FROM TERMINAL TO TERMINAL.**
  - THIS PART CONFORMS TO CLASS B REQUIREMENTS OF COSMETIC SPECIFICATION PS-45499-002 WITH THE EXCEPTION OF THE SURFACE INDICATED WHICH IS A CLASS C SURFACE.**

ASSEMBLY MATERIAL NUMBER	NUMBER OF PORTS	PEG STYLE	DIM -A-	DIM -B-	SIDE PANEL GROUND TABS	INNER/REAR GROUND TABS
44170-0001	8 (2 X 4)	SNAP-FIT	2,330/59.18	2,100/53.34	YES	YES
44170-2001	8 (2 X 4)	SNAP-FIT	2,330/59.18	2,100/53.34	NO	YES
44170-3001	8 (2 X 4)	SNAP-FIT	2,330/59.18	2,100/53.34	YES	NO
44170-4001	8 (2 X 4)	SNAP-FIT	2,330/59.18	2,100/53.34	NO	NO
44170-0004	8 (2 X 4)	PRESS-FIT	2,330/59.18	2,100/53.34	YES	YES
44170-2004	8 (2 X 4)	PRESS-FIT	2,330/59.18	2,100/53.34	NO	YES
44170-3004	8 (2 X 4)	PRESS-FIT	2,330/59.18	2,100/53.34	YES	NO
44170-4004	8 (2 X 4)	PRESS-FIT	2,330/59.18	2,100/53.34	NO	NO
44170-0002	12 (2 X 6)	SNAP-FIT	3,430/87.12	3,200/81.28	YES	YES
44170-2002	12 (2 X 6)	SNAP-FIT	3,430/87.12	3,200/81.28	NO	YES
44170-3002	12 (2 X 6)	SNAP-FIT	3,430/87.12	3,200/81.28	YES	NO
44170-4002	12 (2 X 6)	SNAP-FIT	3,430/87.12	3,200/81.28	NO	NO
44170-0005	12 (2 X 6)	PRESS-FIT	3,430/87.12	3,200/81.28	YES	YES
44170-2005	12 (2 X 6)	PRESS-FIT	3,430/87.12	3,200/81.28	NO	YES
44170-3005	12 (2 X 6)	PRESS-FIT	3,430/87.12	3,200/81.28	YES	NO
44170-4005	12 (2 X 6)	PRESS-FIT	3,430/87.12	3,200/81.28	NO	NO

OBsolete 16 PORT EC NO: UCP2014-5436 DRAWING NO: 2014/06/27 CHKD: BELL APPR: SMITH DATE: 2014/07/17	QUALITY SYMBOLS	GENERAL TOLERANCES (UNLESS SPECIFIED)		DIMENSION STYLE IN/MM		SCALE 2:1	DESIGN UNITS INCH	 THIRD ANGLE PROJECTION																									
	DESCRIPTION	 =0	<table><tr><th>mm</th><th>INCH</th></tr><tr><td>4 PLACES ±</td><td>---</td></tr><tr><td>3 PLACES ±</td><td>--- ±.010</td></tr><tr><td>2 PLACES ±</td><td>0.25 ---</td></tr><tr><td>1 PLACE ±</td><td>---</td></tr><tr><td>0 PLACE ±</td><td>---</td></tr></table>		mm	INCH	4 PLACES ±	---	3 PLACES ±	--- ±.010	2 PLACES ±	0.25 ---	1 PLACE ±	---	0 PLACE ±	---	<table><tr><th>DRAWN BY</th><th>DATE</th></tr><tr><td>MARGULIS</td><td>98/11/16</td></tr><tr><th>CHECKED BY</th><th>DATE</th></tr><tr><td>ROBERTS</td><td>98/11/16</td></tr><tr><th>APPROVED BY</th><th>DATE</th></tr><tr><td>ROBERTS</td><td>98/11/16</td></tr></table>		DRAWN BY	DATE	MARGULIS	98/11/16	CHECKED BY	DATE	ROBERTS	98/11/16	APPROVED BY	DATE	ROBERTS	98/11/16	TITLE STACKED MODULAR JACK WITH LIGHT PIPES CAT 5 <b>molex</b> SD-44170-001		
		mm	INCH																														
		4 PLACES ±	---																														
		3 PLACES ±	--- ±.010																														
		2 PLACES ±	0.25 ---																														
	1 PLACE ±	---																															
	0 PLACE ±	---																															
	DRAWN BY	DATE																															
	MARGULIS	98/11/16																															
CHECKED BY	DATE																																
ROBERTS	98/11/16																																
APPROVED BY	DATE																																
ROBERTS	98/11/16																																
REV	ANGULAR ±1/2°		MATERIAL NO.	DOCUMENT NO.		SHEET NO.																											
	DRAFT WHERE APPLICABLE MUST REMAIN WITHIN DIMENSIONS		SEE CHART		SD-44170-001		1 OF 2																										
			SIZE	THIS DRAWING CONTAINS INFORMATION THAT IS PROPRIETARY TO MOLEX INCORPORATED AND SHOULD NOT BE USED WITHOUT WRITTEN PERMISSION																													

