

## Excellent Integrated System Limited

Stocking Distributor

Click to view price, real time Inventory, Delivery & Lifecycle Information:

[Eaton \(formerly Cooper Bussmann\)](#)  
[1BS103](#)

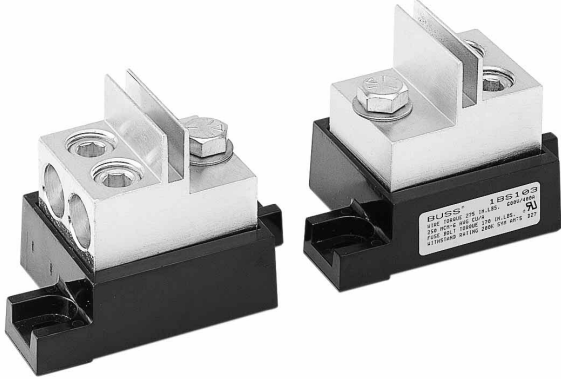
For any questions, you can email us directly:

[sales@integrated-circuit.com](mailto:sales@integrated-circuit.com)

# Modular Fuseblocks

## 0-600V, 400 Amps

# 1BS103



Mounting Dimensions mm (inches)

Catalog No.	"A"	"B"	"C"
FWH 225A-400A	83.8 (3.30)	42.4 (1.67)	201.4 (7.93)
FWX 225A-400A	67.6 (2.66)	26.2 (1.03)	185.2 (7.29)
KAC 110-200	109.2 (4.30)	67.8 (2.67)	226.8 (8.93)
KBC 225-400	103.1 (4.06)	61.7 (2.43)	220.7 (8.69)
160-400LMT	58.9 (2.32)	17.5 (0.69)	176.5 (6.95)
250-400P11C*	184.2 (7.25)	142.7 (5.62)	301.8 (11.88)
JJN 225-400	46.7 (1.84)	5.3 (0.21)	164.3 (6.47)
JJS 225-400	69.1 (2.72)	27.7 (1.09)	186.7 (7.35)
CGL 225-400*	184.2 (7.25)	142.7 (5.62)	301.8 (11.88)

\*When used in multiple pole configurations, 25.40 (1.000) should be maintained between adjacent moldings when mounting the fuses indicated.

**Catalog Symbol:** 1BS103

**Voltage Rating:** 600V

**Current Rating:** 400A

**Base:** Molded black phenolic, 150°C

**Mounting Studs:**

Zinc-plated steel

3/8" - 16 x 3/4" hex head bolt

**Nut:** Zinc-plated steel

**Washer:** Zinc-plated steel

3/8" Belleville washer

**Connector:** Tin-plated aluminum

**Wire Range:** Single #6AWG through two 250MCM

**Wire Types:** Copper or aluminum

Stranded or solid

**Withstand Rating:**

200,000A RMS. SYM. or the interrupting rating of the fuse used, whichever is smaller.

**Torque Requirements:**

Conductor Set Screw: 275 lbs-in

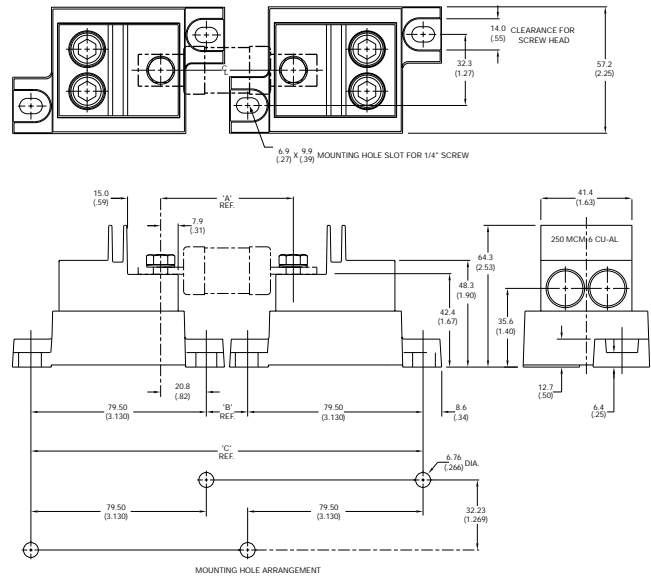
Fuse Mounting Bolt: 170 lbs-in

**Agency Approvals:**

U.L. Recognized, Guide No. IZLT2, File No. E14853

CSA Certified, Class 6225-01, File 47235

Dimensions



CE logo denotes compliance with European Union Low Voltage Directive (50-1000 Vac, 75-1500 Vdc). Refer to BIF document #8002 or contact Bussmann Application Engineering at 314-527-1270 for more information.

The only controlled copy of this BIF document is the electronic read-only version located on the Bussmann Network Drive. All other copies of this BIF document are by definition uncontrolled. This bulletin is intended to clearly present comprehensive product data and provide technical information that will help the end user with design applications. Bussmann reserves the right, without notice, to change design or construction of any products and to discontinue or limit distribution of any products. Bussmann also reserves the right to change or update, without notice, any technical information contained in this bulletin. Once a product has been selected, it should be tested by the user in all possible applications.