

## Excellent Integrated System Limited

Stocking Distributor

Click to view price, real time Inventory, Delivery & Lifecycle Information:

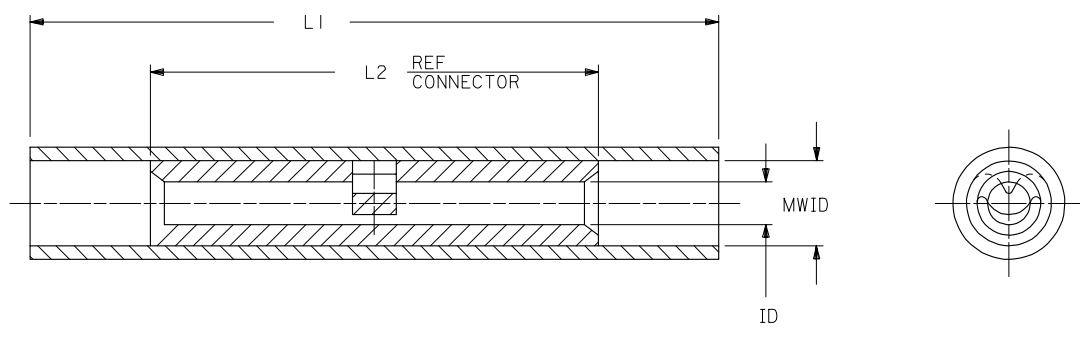
[Molex Connector Corporation](#)  
[0192020013](#)

For any questions, you can email us directly:

[sales@integrated-circuit.com](mailto:sales@integrated-circuit.com)

PART NO.	INSULATION COLOR	WIRE SIZE	ID	L1 MAX	L2 MAX.	MWID
AS-N-345	RED	22-18	.059	1.035	.675	.130
BS-N-331	BLUE	16-14	.091	1.080	.675	.140
CS-N-346	YELLOW	12-10	.138	1.300	.827	.223

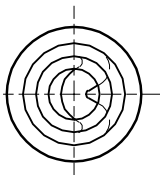
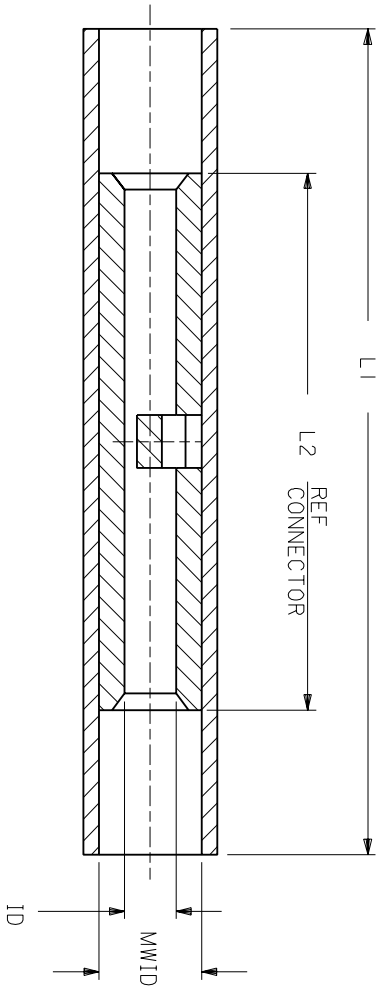
NOTES:  
 1. MATERIAL:  
 INSULATION: NYLON  
 CONNECTOR: TIN PLATED SEAMLESS COPPER  
 3. IF NECESSARY; SLIGHT FLARE ON ONE END ACCEPTABLE FOR ASSEMBLY PURPOSES.



CUSTOMER DRAWING

REVISED & REDRAWN EC NO. 2005/06/13 DRWN:L.SHADECK 2005/06/21 CHKD:R.ROSS 2005/06/21 APPR:R.ROSS 2005/06/21 REV DESCRIPTION	QUALITY SYMBOLS	GENERAL TOLERANCES (UNLESS SPECIFIED)	DIMENSION STYLE IN/MM	SCALE 4:1	DESIGN UNITS INCH	THIRD ANGLE PROJECTION																		
		<table border="1"> <thead> <tr> <th></th> <th>mm</th> <th>INCH</th> </tr> </thead> <tbody> <tr> <td>4 PLACES</td> <td>± .005</td> <td>± .0005</td> </tr> <tr> <td>3 PLACES</td> <td>± .005</td> <td>± .0005</td> </tr> <tr> <td>2 PLACES</td> <td>± .005</td> <td>± .0005</td> </tr> <tr> <td>1 PLACE</td> <td>± .005</td> <td>± .0005</td> </tr> <tr> <td colspan="2">ANGULAR</td> <td>± .005°</td> </tr> </tbody> </table>		mm	INCH	4 PLACES	± .005	± .0005	3 PLACES	± .005	± .0005	2 PLACES	± .005	± .0005	1 PLACE	± .005	± .0005	ANGULAR		± .005°	DRAWN BY EMF DATE 07/03/91 CHECKED BY JM DATE 07/03/91 APPROVED BY FP DATE 07/03/91	TITLE NYLAKRIMP BUTT CONNECTOR MOLEX INCORPORATED		
		mm	INCH																					
	4 PLACES	± .005	± .0005																					
3 PLACES	± .005	± .0005																						
2 PLACES	± .005	± .0005																						
1 PLACE	± .005	± .0005																						
ANGULAR		± .005°																						
DRAFT WHERE APPLICABLE MUST REMAIN WITHIN DIMENSIONS		MATERIAL NO. SEE TABLE	DOCUMENT NO. 60002-11C	SHEET NO. 1 OF 1																				
		THIS DRAWING CONTAINS INFORMATION THAT IS PROPRIETARY TO MOLEX INCORPORATED AND SHOULD NOT BE USED WITHOUT WRITTEN PERMISSION																						

PART NO.	INSULATION COLOR	WIRE SIZE	ID	L1 MAX	L2 MAX	MWID
AS-N-345	RED	22-18	.059	1.035	.675	.130
BS-N-331	BLUE	16-14	.091	1.080	.675	.160
CS-N-346	YELLOW	12-10	.138	1.300	.827	.223



NOTES:  
 1. MATERIAL:  
 INSULATION: NYLON  
 CONNECTOR: TIN PLATED SEAMLESS COPPER  
 3. IF NECESSARY: SLIGHT FLARE ON ONE END ACCEPTABLE FOR ASSEMBLY PURPOSES.

# CUSTOMER DRAWING

REVISE ONLY ON CAD SYSTEM

NYLAKRIMP BUTT CONNECTOR

DIMENSIONS SHOWN (METRIC) INCH	
UNLESS OTHERWISE SPECIFIED TOLERANCES: ANGULAR ± 1/2°	
3 PLACE	± .005 INCH ± 0.13 METRIC
2 PLACE	± .01 INCH ± 0.25 METRIC
1 PLACE	± --- INCH ± --- METRIC

DRAFT WHERE APPLICABLE MUST REMAIN WITHIN DIMENSIONS

DRWG. BY	EMF	CHK'D. BY	JM
APP'D. BY	FP	SCALE	NO: NE

FILE NAME  
60002-11C

THIS DRAWING CONTAINS INFORMATION THAT IS PROPRIETARY TO MOLEX-ETC INC. AND SHOULD NOT BE USED WITHOUT WRITTEN PERMISSION.

SEE TABLE

60002-11C

SHEET NO. 1 OF 1 DATE 91/07/03

LTR.	REVISIONS
A	ADD P/N AND UPDATE DRAWINGS ET80539 12/18 HEB

DRWG. NO. 60002-11C

6

5

4

3

2

1

6

5

4

3

2

1

A

B

C

D

A

B

C

D