

## Excellent Integrated System Limited

Stocking Distributor

Click to view price, real time Inventory, Delivery & Lifecycle Information:

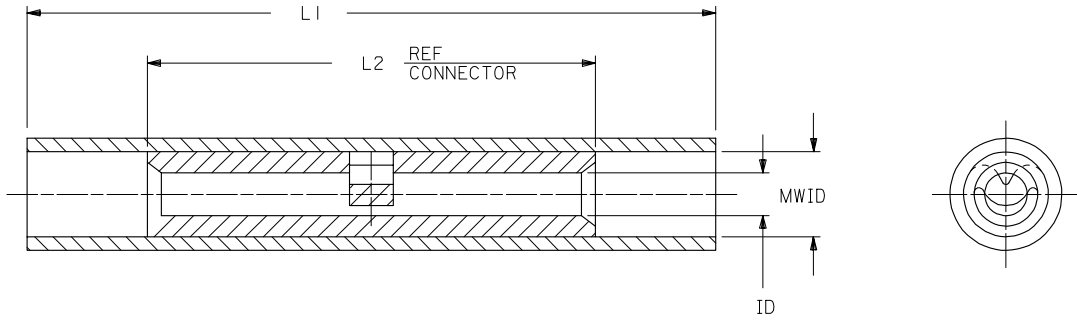
[Molex Connector Corporation](#)  
[19202-0049](#)

For any questions, you can email us directly:

[sales@integrated-circuit.com](mailto:sales@integrated-circuit.com)

PART NO.	INSULATION COLOR	WIRE SIZE	ID	L1 MAX	L2 MAX.	MWID
AS-N-345	RED	22-18	.059	1.035	.675	.130
BS-N-331	BLUE	16-14	.091	1.080	.675	.140
CS-N-346	YELLOW	12-10	.138	1.300	.827	.223

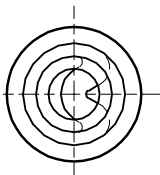
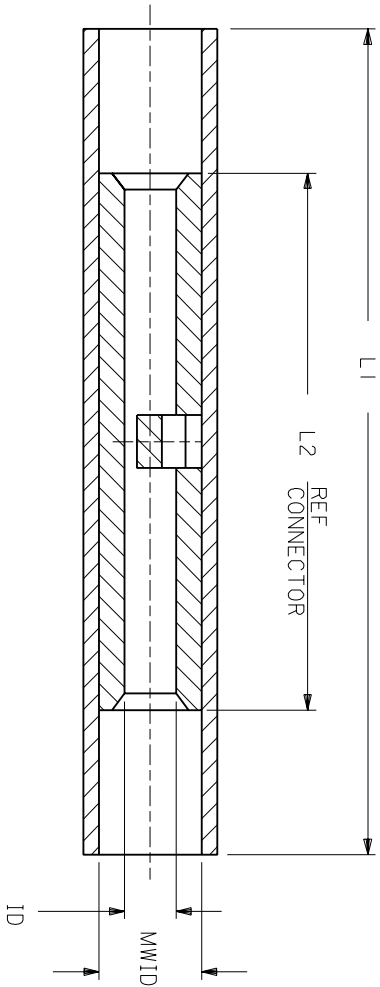
NOTES:  
 1. MATERIAL:  
 INSULATION: NYLON  
 CONNECTOR: TIN PLATED SEAMLESS COPPER  
 3. IF NECESSARY; SLIGHT FLARE ON ONE END ACCEPTABLE FOR ASSEMBLY PURPOSES.



CUSTOMER DRAWING

REVISED & REDRAWN EC NO: 2005/06/13 DRWN:L SHADECK 2005/06/21 CHKD:R.ROSS 2005/06/21 APPR:R.ROSS 2005/06/21 REV DESCRIPTION	QUALITY SYMBOLS	GENERAL TOLERANCES (UNLESS SPECIFIED)	DIMENSION STYLE IN/MM	SCALE 4:1	DESIGN UNITS INCH	THIRD ANGLE PROJECTION																																	
		<table border="1"> <thead> <tr> <th></th> <th>mm</th> <th>INCH</th> </tr> </thead> <tbody> <tr> <td>4 PLACES</td> <td>± ---</td> <td>± ---</td> </tr> <tr> <td>3 PLACES</td> <td>± ---</td> <td>± ---</td> </tr> <tr> <td>2 PLACES</td> <td>± ---</td> <td>± ---</td> </tr> <tr> <td>1 PLACE</td> <td>± ---</td> <td>± ---</td> </tr> <tr> <td colspan="3">ANGULAR ± ---°</td> </tr> </tbody> </table>		mm	INCH	4 PLACES	± ---	± ---	3 PLACES	± ---	± ---	2 PLACES	± ---	± ---	1 PLACE	± ---	± ---	ANGULAR ± ---°			<table border="1"> <tr> <td>DRAWN BY</td> <td>DATE</td> <td rowspan="3">TITLE NYLAKRIMP BUTT CONNECTOR</td> </tr> <tr> <td>EMF</td> <td>07/03/91</td> </tr> <tr> <td>CHECKED BY</td> <td>DATE</td> </tr> <tr> <td>JM</td> <td>07/03/91</td> <td></td> </tr> <tr> <td>APPROVED BY</td> <td>DATE</td> <td rowspan="2">  MOLEX INCORPORATED         </td> </tr> <tr> <td>FP</td> <td>07/03/91</td> </tr> </table>	DRAWN BY	DATE	TITLE NYLAKRIMP BUTT CONNECTOR	EMF	07/03/91	CHECKED BY	DATE	JM	07/03/91		APPROVED BY	DATE	MOLEX INCORPORATED	FP	07/03/91			
		mm	INCH																																				
	4 PLACES	± ---	± ---																																				
3 PLACES	± ---	± ---																																					
2 PLACES	± ---	± ---																																					
1 PLACE	± ---	± ---																																					
ANGULAR ± ---°																																							
DRAWN BY	DATE	TITLE NYLAKRIMP BUTT CONNECTOR																																					
EMF	07/03/91																																						
CHECKED BY	DATE																																						
JM	07/03/91																																						
APPROVED BY	DATE	MOLEX INCORPORATED																																					
FP	07/03/91																																						
	DRAFT WHERE APPLICABLE MUST REMAIN WITHIN DIMENSIONS	MATERIAL NO. SEE TABLE	DOCUMENT NO. 60002-11C	SHEET NO. 1 OF 1																																			
		SIZE A	THIS DRAWING CONTAINS INFORMATION THAT IS PROPRIETARY TO MOLEX INCORPORATED AND SHOULD NOT BE USED WITHOUT WRITTEN PERMISSION																																				

PART NO.	INSULATION COLOR	WIRE SIZE	ID	L1 MAX	L2 MAX	MWID
AS-N-345	RED	22-18	.059	1.035	.675	.130
BS-N-331	BLUE	16-14	.091	1.080	.675	.160
CS-N-346	YELLOW	12-10	.138	1.300	.827	.223



NOTES:  
 1. MATERIAL:  
 INSULATION: NYLON  
 CONNECTOR: TIN PLATED SEAMLESS COPPER  
 3. IF NECESSARY: SLIGHT FLARE ON ONE END ACCEPTABLE FOR ASSEMBLY PURPOSES.

# CUSTOMER DRAWING

REVISE ONLY ON CAD SYSTEM

NYLAKRIMP BUTT CONNECTOR

DIMENSIONS SHOWN (METRIC) INCH	
UNLESS OTHERWISE SPECIFIED TOLERANCES: ANGULAR ± 1/2°	
3 PLACE	± .005
2 PLACE	± .01
1 PLACE	± .025

DRAFT WHERE APPLICABLE MUST REMAIN WITHIN DIMENSIONS

DRWG. BY	EMF	CHK'D. BY	JM
APP'D. BY	FP	SCALE	NO: NE

PART NO.	60002-11C
FILE NAME	60002-11C.SD

THIS DRAWING CONTAINS INFORMATION THAT IS PROPRIETARY TO MOLEX-ETC INC. AND SHOULD NOT BE USED WITHOUT WRITTEN PERMISSION.
--

SHEET NO.	1 OF 1	DATE	91/07/03
-----------	--------	------	----------

60002-11C

DIV.	ET	SIZE	A
------	----	------	---

DRWG. NO. 60002-11C

LTR.	REVISIONS
A	ADD P/N AND UPDATE DRAWINGS ET80539 12/18 HEB

6

5

4

3

2

1

6

5

4

3

2

1