

Excellent Integrated System Limited

Stocking Distributor

Click to view price, real time Inventory, Delivery & Lifecycle Information:

[IXYS Corporation](#)

[DSSK28-0045BS](#)

For any questions, you can email us directly:

sales@integrated-circuit.com

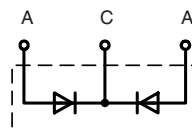
Power Schottky Rectifier with common cathode

$$I_{FAV} = 2 \times 15 \text{ A}$$

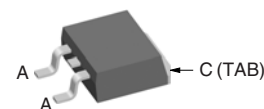
$$V_{RRM} = 45 \text{ V}$$

$$V_F = 0.43 \text{ V}$$

V_{RSM}	V_{RRM}	Type
V	V	
45	45	DSSK 28-0045BS



TO-263 AB



A = Anode, C = Cathode, TAB = Cathode

Symbol	Conditions	Maximum Ratings	
I_{FRMS}		35	A
I_{FAV}	$T_C = 135^\circ\text{C}$; rectangular, $d = 0.5$	15	A
I_{FAV}	$T_C = 135^\circ\text{C}$; rectangular, $d = 0.5$; per device	30	A
I_{FSM}	$T_{VJ} = 45^\circ\text{C}$; $t_p = 10 \text{ ms}$ (50 Hz), sine	320	A
E_{AS}	$I_{AS} = 15 \text{ A}$; $L = 180 \mu\text{H}$; $T_{VJ} = 25^\circ\text{C}$; non repetitive	32	mJ
I_{AR}	$V_A = 1.5 \cdot V_{RRM}$ typ.; $f = 10 \text{ kHz}$; repetitive	1.5	A
$(dv/dt)_{cr}$		1000	V/ μs
T_{VJ}		-55...+150	$^\circ\text{C}$
T_{VJM}		150	$^\circ\text{C}$
T_{stg}		-55...+150	$^\circ\text{C}$
P_{tot}	$T_C = 25^\circ\text{C}$	90	W
M_d	mounting torque (Version B only)	0.4...0.6	Nm
Weight	typical	2	g

Features

- International standard package
- Very low V_F
- Extremely low switching losses
- Low I_{RM} -values
- Epoxy meets UL 94V-0

Applications

- Rectifiers in switch mode power supplies (SMPS)
- Free wheeling diode in low voltage converters

Advantages

- High reliability circuit operation
- Low voltage peaks for reduced protection circuits
- Low noise switching
- Low losses

Symbol	Conditions	Characteristic Values	
		typ.	max.
I_R ①	$V_R = V_{RRM}$; $T_{VJ} = 25^\circ\text{C}$		20 mA
	$V_R = V_{RRM}$; $T_{VJ} = 100^\circ\text{C}$		100 mA
V_F	$I_F = 15 \text{ A}$; $T_{VJ} = 125^\circ\text{C}$		0.43 V
	$I_F = 15 \text{ A}$; $T_{VJ} = 25^\circ\text{C}$		0.48 V
	$I_F = 30 \text{ A}$; $T_{VJ} = 125^\circ\text{C}$		0.60 V
R_{thJC}		0.25	1.4 K/W
R_{thCH}			K/W

Pulse test: ① Pulse Width = 5 ms, Duty Cycle < 2.0%
 Data according to IEC 60747 and per diode unless otherwise specified.

Dimensions see Outlines.pdf

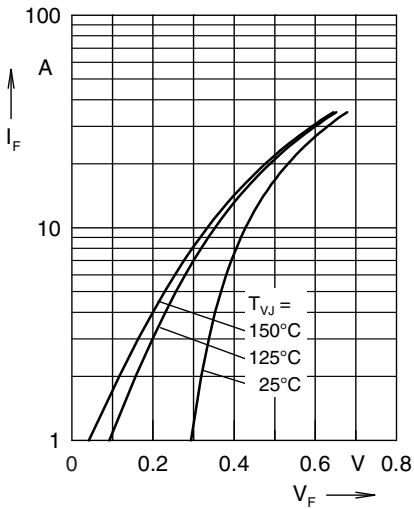


Fig. 1 Maximum forward voltage drop characteristics

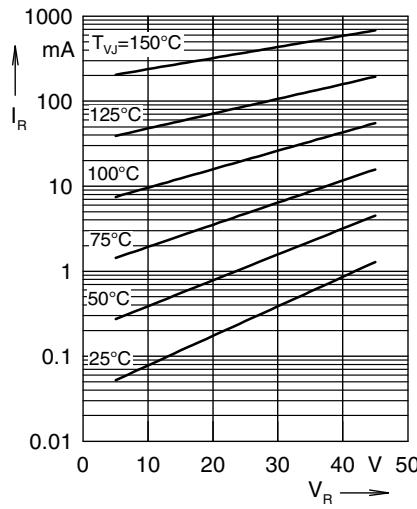


Fig. 2 Typ. value of reverse current I_R versus reverse voltage V_R

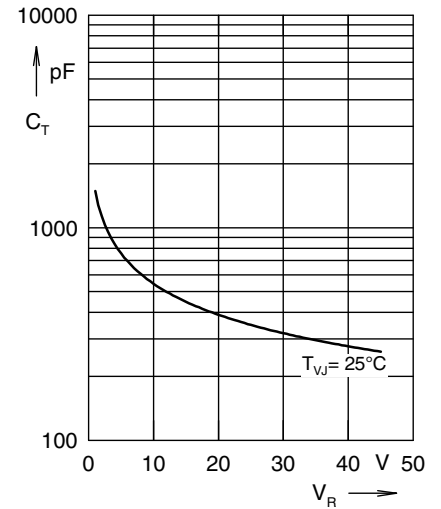


Fig. 3 Typ. junction capacitance C_T versus reverse voltage V_R

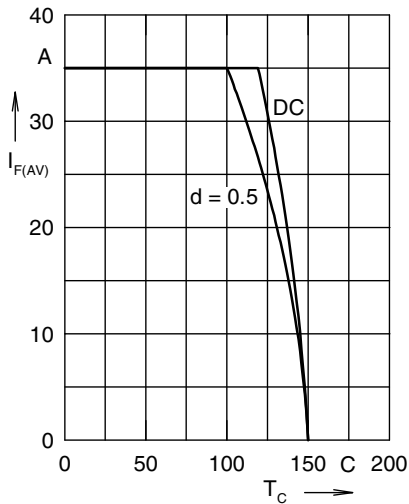


Fig. 4 Average forward current $I_{F(AV)}$ versus case temperature T_C

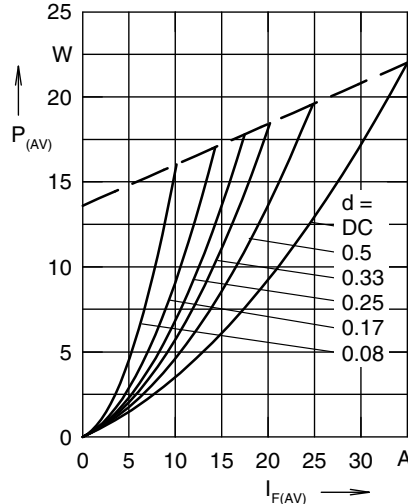


Fig. 5 Forward power loss characteristics

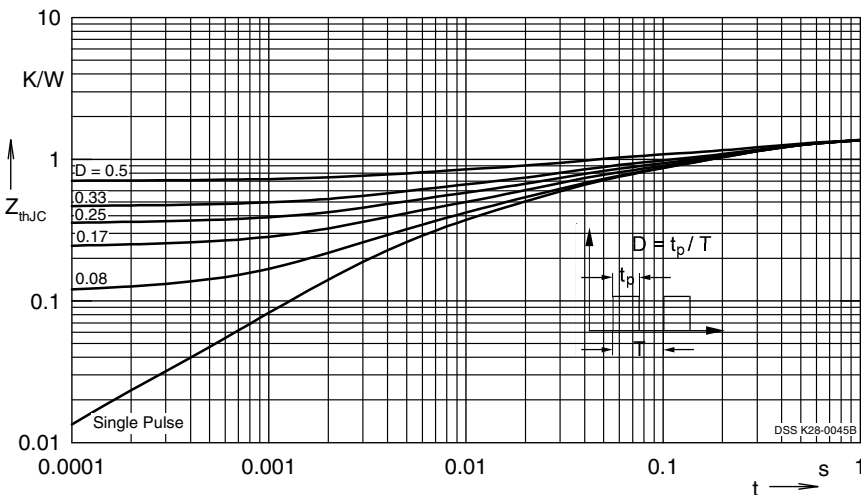


Fig. 6 Transient thermal impedance junction to case at various duty cycles

Note: All curves are per diode