

Excellent Integrated System Limited

Stocking Distributor

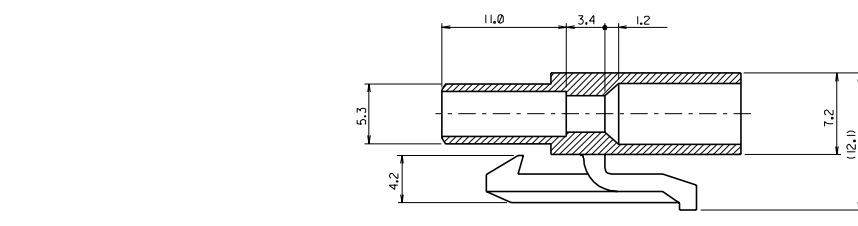
Click to view price, real time Inventory, Delivery & Lifecycle Information:

[Molex Connector Corporation](#)
[0351430201](#)

For any questions, you can email us directly:

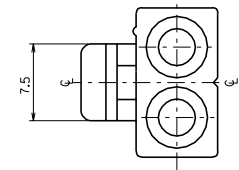
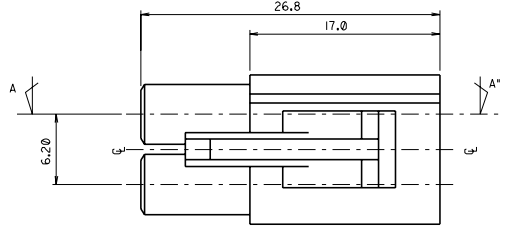
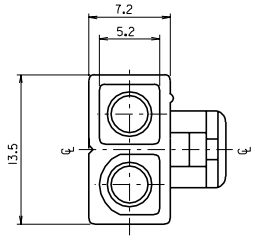
sales@integrated-circuit.com

PROJECT NO. SIMILAR ITEM EDP NO. ENG. NO. SD 35143-020*



- NOTES
1. MATERIAL: NYLON 6 (UL94-V2)
 2. APPLICABLE TERMINAL: 35728-0201
 3. MATING HOUSING: 35141-020*
 4. COLOR : 35143-0201 (NATURAL)
35143-0202 (RED)

SECTION A-A*



DO NOT SCALE DRAWING DIMENSION IN METRIC

ASSY PART		QTY/REEL OR PACK	SURFACE AREA	MATERIAL	WIRE RANGE	GENERAL TOLERANCES	
DESCRIPTION	ENG.NO.	500 QTY/BAG	MM ²	SEE NOTES	AWG:	DIM. : ±0.25	
DIMENSION CLASSIFICATION		DIE NO.	LAYOUT NO.	<input type="checkbox"/> : CRITICAL <input checked="" type="checkbox"/> : MAJOR <input type="checkbox"/> : MINOR () : REFERENCE		REVISE ONLY ON CAD SYSTEM	
DRAWN BY		WIRE CRIMP WIDTH	INS. CRIMP WIDTH	W.Y.YANG	INSULATION RANGE	TITLE: Ø2.0 PLUG HOUSING-2P	
CHK'D BY		WBDW	IBDW	APP'D BY	SCALE	ENG.NO.	REV C
DATE		DIE FEED	APPL FEED	N/S		SD 35143-020*	MK-9

8 7 6 5 4 3 2 1 OF 1