

Excellent Integrated System Limited

Stocking Distributor

Click to view price, real time Inventory, Delivery & Lifecycle Information:

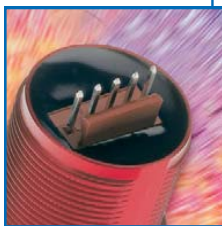
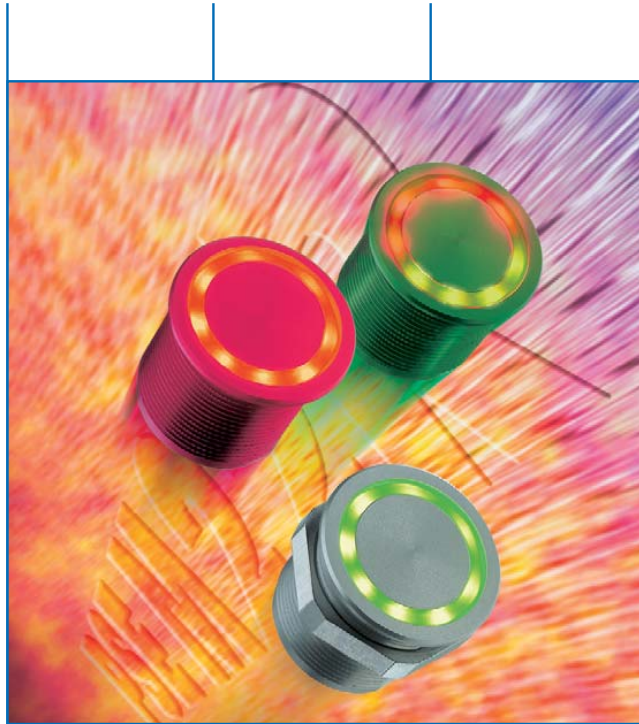
[Schurter](#)
[1241.3250](#)

For any questions, you can email us directly:

sales@integrated-circuit.com



PIEZO SWITCHES COMPACT MOUNTING – POWERFUL ILLUMINATION



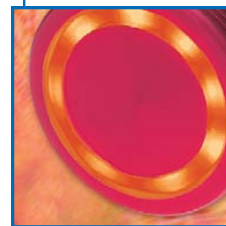
CONNECTOR



WIRE



THREAD WITH O-RING SEAL



RING ILLUMINATION

The new piezo switch PSE M22R from SCHURTER has been specially designed for applications in hostile environments. Its vandal-proof housing with a compact M22 metric thread screw socket encloses a powerful ring illumination, which is available in a choice of one or two colours and can be

attached to a 12 or 24 V DC power supply. The optional impulse prolongation allows the signal to be extended to the whole time of actuation (max. 50 sec.). The new SCHURTER piezo switch PSE M22R can be ordered complete with Molex connector or wires.

METAL LINE

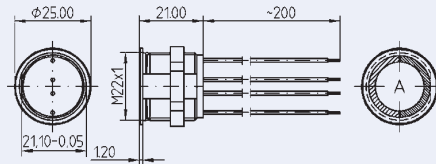
INPUT SYSTEMS



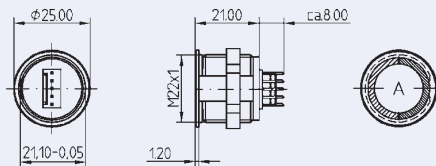
PSE M22R



WITH WIRE



WITH CONNECTOR



PSE M22R

TECHNICAL DATA

Switching voltage max.	60 V DC / 42 V AC		60 V DC / 42 V AC	
Switching current	0,1 A		0,1 A	
Switching capacity max.	1 W		1 W	
Lifetime (at rated breaking capacity)	20 x10 ⁶		20 x10 ⁶	
N.O. make impulse time	20 - 1000 ms		20 - 1000 ms	
Actuating force	1,5 - 3,0 N		1,5 - 3,0 N	
Degree of protection	IP 67		IP 67	
Shock resistance	IK 02 (according to DIN EN 50102)		IK 02 (according to DIN EN 50102)	
Operating/storage temperature	-25 – +65 °C		-25 – +65 °C	
Housing material/colour	aluminium natural ¹⁾		aluminium natural ¹⁾	
Power supply	12 V		24 V	
Terminals	wire	connector	wire	connector

PART NUMBER

Illumination, red	1241.3250	1241.3253	1241.3256	1241.3259
Illumination, green	1241.3251	1241.3254	1241.3257	1241.3260
Illumination, red/green	1241.3252	1241.3255	1241.3258	1241.3261

¹⁾ Various housing colours on request

Options:

- Standard- and customized laser-lettering
- Ring illumination in one or two colours
- Power supply 12V or 24V
- Impulse prolongation possible (max.50 sec.)
- Terminal with connector (Molex) or wire