



Distributor of Cardinal Components: Excellent Integrated System Limited

Datasheet of CTED-A5B3-155.52TS - OSC TCXO 155.52MHZ LVPECL SMD

Contact us: sales@integrated-circuit.com Website: www.integrated-circuit.com

Excellent Integrated System Limited

Stocking Distributor

Click to view price, real time Inventory, Delivery & Lifecycle Information:

[Cardinal Components](#)
[CTED-A5B3-155.52TS](#)

For any questions, you can email us directly:

sales@integrated-circuit.com

LVPECL Surface Mount TCXO

CARDINAL COMPONENTS

CTED

- * LVPECL Output
- * Industry Standard Outline

- Applications**
- * Serial Communications
 - * Routers
 - * Switches
 - * WAN Interfaces
 - * Test Equipment



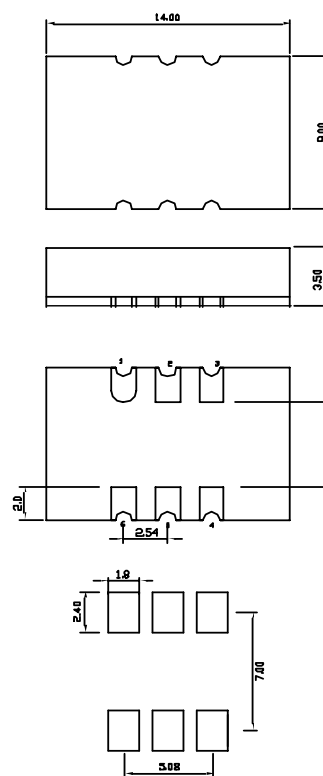
Part Numbering Example: **CTED Z - A5 B3 - 222.5792 TS**

| | | | | | |
|---------------|-----------------------------------|---|------------------|------------------|------------------|
| CTED | Z | A5 | B3 | 222.5792 | TS |
| SERIES | PACKAGING OPTIONS | OPERATING TEMP. | STABILITY | FREQUENCY | TRI-STATE |
| CTED | Blank = Bulk Z = Tape and Reel | Blank = 0°C ~ +70°C A5 = -20°C ~ +70°C | B3 = ±2.5 ppm | | TS = Tri-State |

| Specifications: | Min | Typ | Max | Unit |
|---|---------------------------------|------|------------|--------|
| Frequency Range: | 38 | | 640 | MHz |
| Stability: | - 2.5 | | + 2.5 | ppm |
| Supply Voltage: | 3.135 | 3.3 | 3.465 | V |
| Operating Temperature: | -30 | | + 70 | °C |
| Storage Temperature: | -40 | | + 85 | °C |
| Duty Cycle: | 45 | | 55 | % |
| Start-Up Time: | | 3 | 10 | mS |
| Aging: (ppm/1st Year) Ta=25C, Vdd=3.3V | | | 1 | ppm |
| Supply Current: | | | 100 | mA |
| Short Circuit Current: | | ± 50 | | mA |
| RMS Period Jitter: | | 5 | | pS |
| RMS Integrated Jitter: 12kHz to 20MHz | | 0.7 | | pS |
| Phase Noise @ 10kHz: | | | -120 | dBc/Hz |
| Output Voltage: Voh Vol | Vdd - 1.025 | | Vdd - 1.62 | V V |
| Rise/Fall Time: | | 0.4 | 0.8 | nS |
| Output Level: | LVPECL | | | |
| Packaging: | Tape and Reel 1000 pcs per Reel | | | |

CTED

Dimensions are in mm



- PIN Function**
- 1 DISABLE
 - 2 NO CONNECT
 - 3 Ground
 - 4 LVPECL +
 - 5 LVPECL -
 - 6 Vdd

LVPECL Levels Test Circuit

