

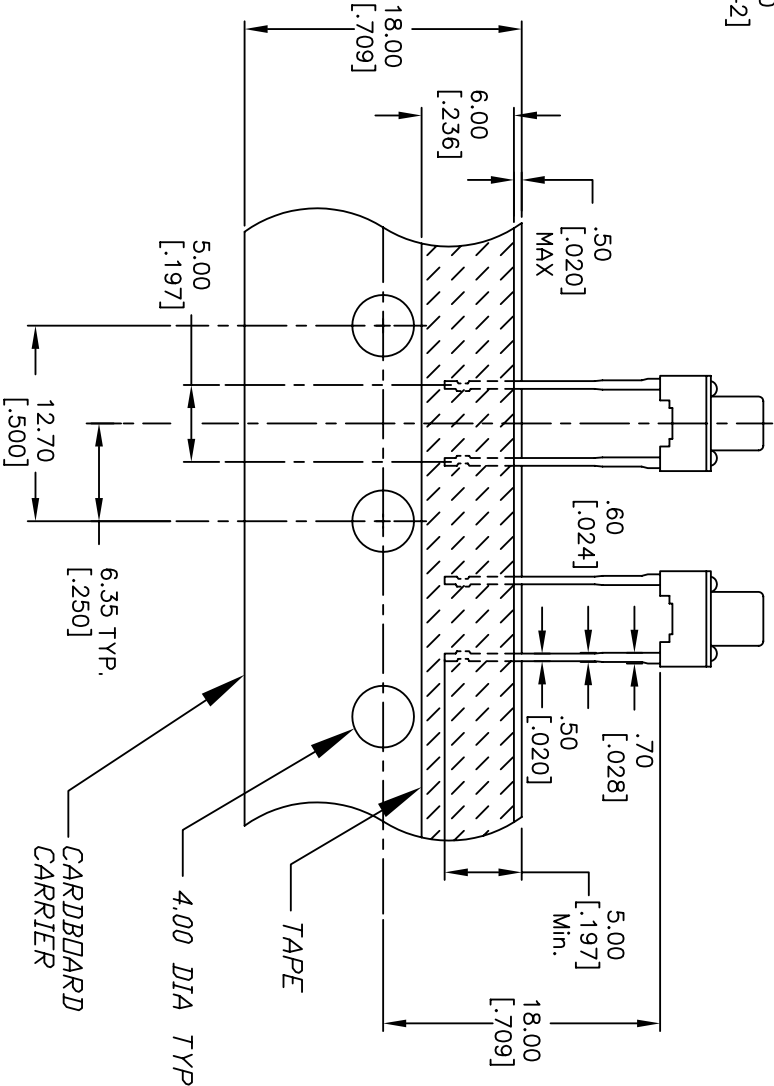
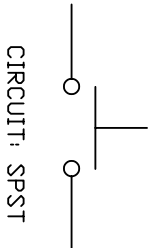
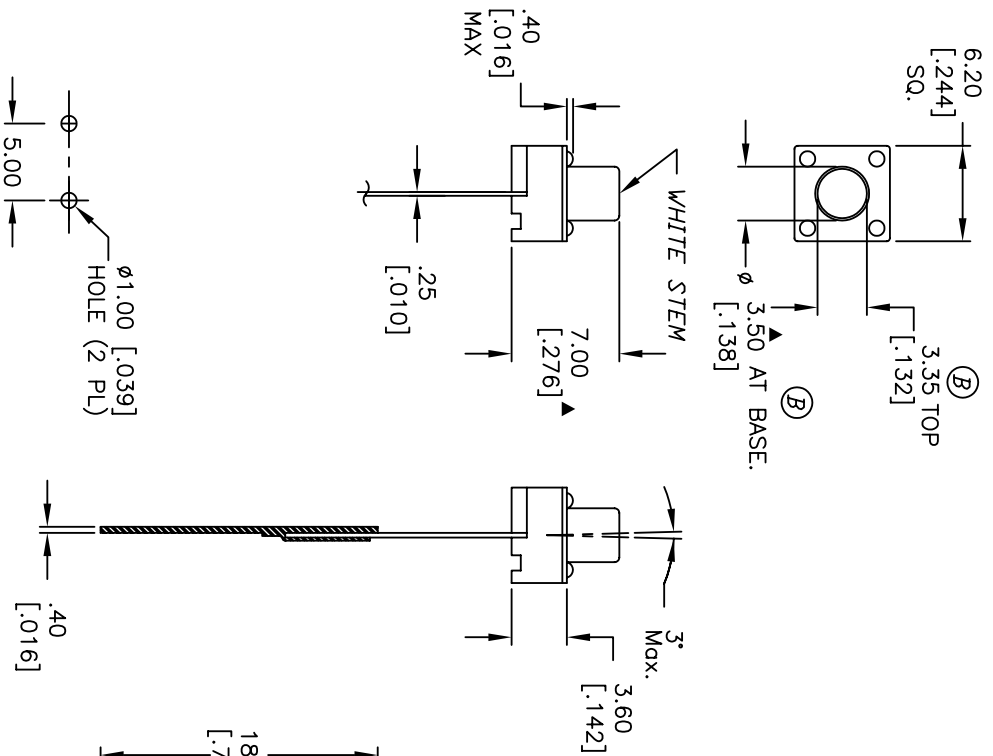
## Excellent Integrated System Limited

Stocking Distributor

Click to view price, real time Inventory, Delivery & Lifecycle Information:

[E-Switch](#)  
[TL59FF160Q](#)

For any questions, you can email us directly:  
[sales@integrated-circuit.com](mailto:sales@integrated-circuit.com)



- NOTES:
1. ALL DIMENSIONS IN MM [INCH]
  2. GENERAL TOLERANCE: X.X=±0.4 X.XX=±0.25
  3. CONTACT RATING: 50mA @12V DC
  4. CONTACT MATERIAL: SILVER
  5. OPERATING FORCE: 160±50gf
  6. TRAVEL: 0.25 +0.2/-0.1
  7. CONTACT RESISTANCE: 100mΩ Ohms max.
  8. ELECTRICAL LIFE: 100,000 CYCLES
  9. PACKAGING:  
 CARRIER IS FOLDED EVERY 25 PITCHES  
 (24) SWITCHES PER BOX  
 (1,000) SWITCHES PER BOX
  10. 2002/95/EC (ROHS) COMPLIANT
  11. ▲ DENOTES MAJOR DIMENSION.

REV.	ECN No.	DESCRIPTION	DATE	CHKD
C	16886	UPDATE NOTES. 30 DIM TD .25	1/18/07	TN
B	11927	REVISED AND REDRAWN	1/09/02	CB

SCALE	DATE	DR	DWG	REV
2:1	1/18/07	TN	P010569	C

**E-SWITCH®**

TL59FF160Q

THE INFORMATION CONTAINED IN THIS DOCUMENT IS PROPRIETARY TO E-SWITCH AND IS NOT TO BE COPIED OR TRANSFERRED