

Excellent Integrated System Limited

Stocking Distributor

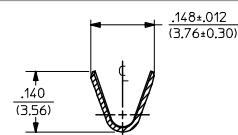
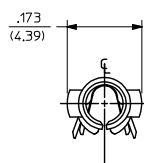
Click to view price, real time Inventory, Delivery & Lifecycle Information:

[Molex Connector Corporation](#)
[0002091117](#)

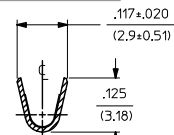
For any questions, you can email us directly:

sales@integrated-circuit.com

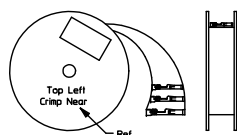
PART NO.	ENG. NO.
02-09-1119	1381-A(P901L)
02-09-1117	1381-A(P901)
02-09-1115	1381-A(P901I)
02-09-5133	1381-A(P591L)
02-09-5130	1381-A(P591)
02-09-5142	1381-A(P550L)
02-09-5143	1381-A(550)



SECT. "A-A"



SECT. "B-B"



STANDARD CHAIN

LEGEND

1381-A(****)*

P = PREPLATE
BLANK = POSTPLATE

FORM
BLANK = STD. CHAIN
1 = STD. CHAIN WITH INTERLEAF PAPER
L = LOOSE

FINISH CODE

NOTES:

1. MATERIAL: BRASS
2. FINISH:

901 HOT TIN DIP .000020/(0.00051) MIN.

591 SELECT GOLD PLATE .000050/(0.00127) MIN. IN CONTACT AREA, OVER .000050/(0.00127) MIN. NICKEL OVERALL WITH .000010/(0.00025) MAX. GOLD FLASH OVERALL.

550 SELECT GOLD PLATE .000015/(0.00038) MIN. IN CONTACT AREA, OVER .000030/(0.00076) MIN. NICKEL OVERALL WITH .000010/(0.00025) MAX. GOLD FLASH OVERALL.

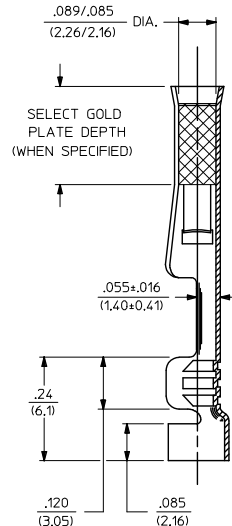
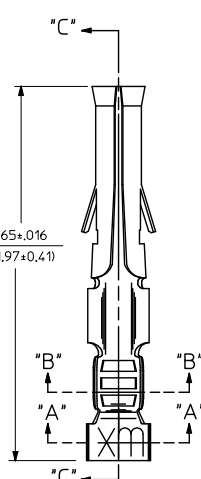
3. PRODUCT SPECIFICATION PS-43660-9999.

4. PACKAGING INFORMATION: NOT AVAILABLE

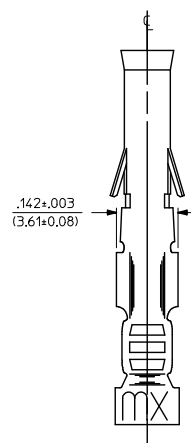
5. TERMINAL FOR USE WITH .093/(2.36) SERIES HOUSINGS AND WILL ACCEPT 18-22 AWG WIRE

6. INSERTION FORCE: 3.5 LBS. MAX. WHEN TERMINAL IS INSERTED INTO AN .093 SERIES HOUSING.

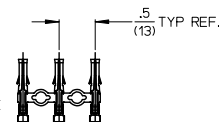
7. TERMINAL RETENTION: 20 LBS. MIN. FROM HOUSING.



SECT. "C-C"



CHAIN FORM
FULL SCALE



CORRECT TOLERANCE DEC NO: D2004-4764 REV REV 1	QUALITY SYMBOLS	GENERAL TOLERANCES (UNLESS SPECIFIED)		DIMENSION STYLE IN/MM		SCALE 6:1	DESIGN UNITS INCH	THIRD ANGLE PROJECTION	TITLE CRIMP TERMINAL, FEMALE .093(2.36) DIA. 18-22 AWG molex SD-1381-*	MATERIAL NO. SEE CHART	DOCUMENT NO. SD-1381-*	SHEET NO. 1 OF 1
	▽=0	mm	INCH	DRAWN BY	DATE	6:1	INCH	THIRD ANGLE PROJECTION				
	▽=0	4 PLACES ± .010	± .010	GEP	1987/11/06							
	▽=0	3 PLACES ± .010	± .010	CHECKED BY	DATE							
	▽=0	2 PLACES ± 0.25	± .014	RW	1987/11/06							
		1 PLACE ± 0.35	± .014	APPROVED BY	DATE							
		0 PLACE ± .010	± .010	RAS	1987/11/06							
		ANGULAR ±1/2°		SEE CHART								
		DRAFT WHERE APPLICABLE MUST REMAIN WITHIN DIMENSIONS		SIZE								
				THIS DRAWING CONTAINS INFORMATION THAT IS PROPRIETARY TO MOLEX INCORPORATED AND SHOULD NOT BE USED WITHOUT WRITTEN PERMISSION								