

Excellent Integrated System Limited

Stocking Distributor

Click to view price, real time Inventory, Delivery & Lifecycle Information:

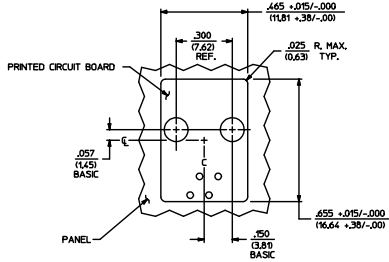
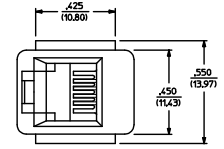
[Molex Connector Corporation](#)
[0424108312](#)

For any questions, you can email us directly:

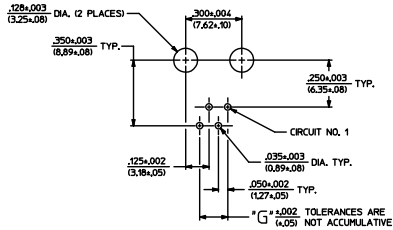
sales@integrated-circuit.com

NOTES:
 1) MATERIALS: HOUSING PARTS ARE MADE OF POLYESTER, RATED UL 94 V-0, COLOR IS BLACK; TERMINALS ARE .015(0.38) THICK PHOSPHOR BRONZE.
 2) TERMINAL PLATING OPTIONS PER ES-88-****:
 A - SELECT GOLD IN CONTACT AREA: 50 MICRONS MIN.
 SELECT MATTIE TIN IN PC TAIL AREA: 100 MICRONS MIN.
 WITH OVERALL NICKEL UNDERPLATE: 50 MICRONS MIN.
 3) THESE MODULAR JACKS MEET THE PERFORMANCE REQUIREMENTS OF MOLEX PRODUCT SPECIFICATION PS-42410.
 4) CONNECTORS ARE TO BE PACKED IN THERMOFORMED TRAYS, PER PACKAGING SPECIFICATION PK-42410-492.
 5) ALL JACKS ARE DESIGNED TO BE USED WITH .062(1.57) OR .025(0.63) THICK P.C. BOARDS.
 6) ALL JACKS CONFORM TO AND ACCEPT PLUGS WHICH CONFORM TO FCC RULES AND REGULATIONS PART 68, SUBPART F, WHEN PLATED WITH 50 MICRONS GOLD.
 7) ALL JACKS MUST BE CAPABLE OF FITTING INTO MOLEX GAGE G-42410 (CONNECTOR SIZE 4).
 8) SEE SHEETS 2 & 4 FOR CONNECTOR SIZE 6.
 9) SEE SHEETS 3 & 4 FOR CONNECTOR SIZE 8.
 10) SEE SHEET 4 FOR ASSEMBLY ITEM NUMBERS.
 11) PART CONFORMS TO CLASS 'B' REQUIREMENTS OF COSMETIC SPECIFICATION PS-45499-002.
 12) ENGRAVED NUMBERS ON HOUSING BODY ARE FOR MOLDING IDENTIFICATION ONLY. THEY ARE NOT INTENDED FOR ASSEMBLY IDENTIFICATION PURPOSES.
 13) ALL UNTOLERANCED DIMENSIONS ARE SHOWN FOR REFERENCE ONLY.

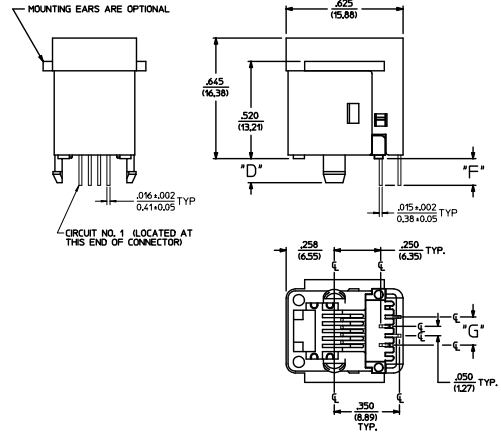
P.C. BOARD THICKNESS	DIM. 'D' (MTG. PEGS)	DIM. 'F' (P.C. TAILS)	CONNECTOR SIZE	CIRCUIT SIZE	DIM. 'G'
0.062"	.128 (3.25)	.120 +.015/-.025 (3.05 +.38/-.63)	4	4	.150 (3.81)
0.125"	.191 (4.85)	.205 +.015/-.025 (5.21 +.38/-.63)	4	2	.090 (2.27)



PANEL CUT-OUT FOR CONNECTOR SIZE 4



P.C. BOARD LAYOUT FOR CONNECTOR SIZE 4
 VIEWED FROM COMPONENT SIDE

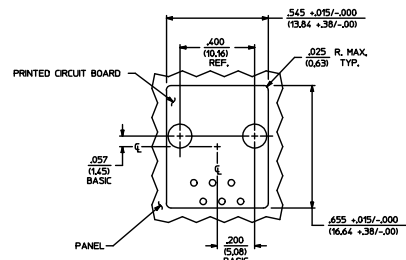
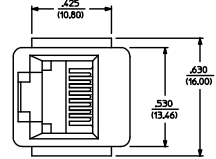


SIZE 4 MODULAR JACK LOADED WITH 4 TERMINALS SHOWN ABOVE
 (SEE SHEET 4 FOR PART NUMBER AVAILABILITY)

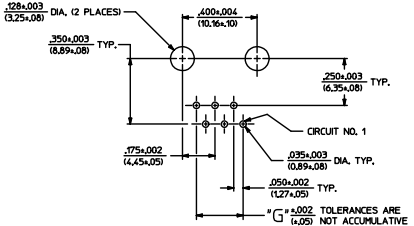
QUALITY SYMBOLS	GENERAL TOLERANCES (UNLESS SPECIFIED)	DIMENSION STYLE		SCALE	DESIGN UNITS	THIRD ANGLE PROJECTION
		IN/MM	INCH			
▽=0	4 PLACES ±.005	mm	INCH	4:1	INCH	ASSEMBLY, VERTICAL MODULAR JACKS
▽=0	3 PLACES ±.010	DRAWN BY DATE		1990/10/12		
▽=0	2 PLACES ±0.25	CHECKED BY DATE		1990/10/12		
▽=0	1 PLACE ±.005	APPROVED BY DATE		2012/02/14		
▽=0	0 PLACE ±.005	MATERIAL NR.		DOCUMENT NR.		
	ANGULAR ±1/2°	SEE SHEET 4		SDA-42410-****		
DRAFT WHERE APPLICABLE MUST REMAIN WITHIN DIMENSIONS		SIZE D		THIS DRAWING CONTAINS INFORMATION THAT IS PROPRIETARY TO MOLEX INCORPORATED AND SHOULD NOT BE USED WITHOUT WRITTEN PERMISSION		

- NOTES:
- MATERIALS: HOUSING PARTS ARE MADE OF POLYESTER, RATED UL, 94 V-0, COLOR IS BLACK, TERMINALS ARE .015(0.38) THICK PHOSPHOR BRONZE.
 - TERMINAL PLATING OPTIONS PER ES-88-****:
 - A - SELECT GOLD IN CONTACT AREA: 50 MICRONS MIN. SELECT MATTE TIN IN PC TAIL AREA: 100 MICRONS MIN. WITH OVERALL NICKEL UNDERPLATE: 50 MICRONS MIN.
 - B - SELECT GOLD IN CONTACT AREA: 15 MICRONS MIN. SELECT MATTE TIN IN PC TAIL AREA: 100 MICRONS MIN. WITH OVERALL NICKEL UNDERPLATE: 50 MICRONS MIN.
 - THESE MODULAR JACKS MEET THE PERFORMANCE REQUIREMENTS OF MOLEX PRODUCT SPECIFICATION PS-42410.
 - CONNECTORS ARE TO BE PACKED IN THERMOFORMED TRAYS, PER PACKAGING SPECIFICATION PK-42410-49Z.
 - ALL JACKS ARE DESIGNED TO BE USED WITH .062(1.57) OR .051(1.31) THICK P.C. BOARDS.
 - ALL JACKS CONFORM TO AND ACCEPT PLUGS WHICH CONFORM TO FCC RULES AND REGULATIONS PART 68, SUBPART F, WHEN PLATED WITH 50 MICRONS GOLD.
 - ALL JACKS MUST BE CAPABLE OF FITTING INTO MOLEX GAGE G-42410 (CONNECTOR SIZE 4).
 - SEE SHEETS 1 & 4 FOR CONNECTOR SIZE 4.
 - SEE SHEETS 3 & 4 FOR CONNECTOR SIZE 8.
 - SEE SHEET 4 FOR ASSEMBLY ITEM NUMBERS.
 - PART CONFORMS TO CLASS "B" REQUIREMENTS OF COSMETIC SPECIFICATION PS-5499-002.
 - ENGRAVED NUMBERS ON HOUSING BODY ARE FOR HOLDING IDENTIFICATION ONLY.
 - THEY ARE NOT INTENDED FOR ASSEMBLY IDENTIFICATION PURPOSES.
 - ALL UNTOLERANCED DIMENSIONS ARE SHOWN FOR REFERENCE ONLY.

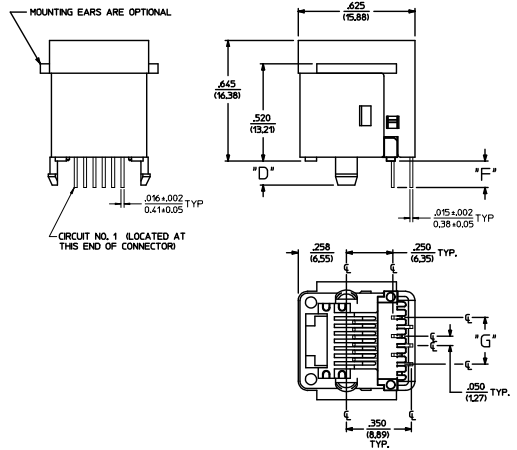
P.C. BOARD THICKNESS	DIM. 'D' (MTG. PEGS)	DIM. 'F' (P.C. TAILS)	CONNECTOR SIZE	CIRCUIT SIZE	DIM. 'G'
0.062(1.57)	.128 (3.25)	.120 +.015/-.025 (3.05 +.38/-6.3)	6	6	.250 (6.35)
0.125(3.18)	.191 (4.85)	.205 +.015/-.025 (5.21 +.38/-6.3)	6	4	.150 (3.81)
			6	2	.050 (1.27)



PANEL CUT-OUT FOR CONNECTOR SIZE 6



P.C. BOARD LAYOUT FOR CONNECTOR SIZE 6
VIEWED FROM COMPONENT SIDE



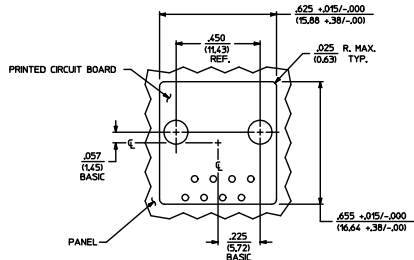
SIZE 6 MODULAR JACK LOADED WITH 6 TERMINALS SHOWN ABOVE
(SEE SHEET 4 FOR PART NUMBER AVAILABILITY)

SEE SHEET 1 EC NO. 0424108312-2536 DRAWING/REV 2015/07/24 CHK'D/BEL 2015/07/24 APPR'D/SM 2015/07/24 REV 1	QUALITY SYMBOLS	GENERAL TOLERANCES (UNLESS SPECIFIED)	DIMENSION STYLE IN/MM	SCALE 4:1	DESIGN UNITS INCH	THIRD ANGLE PROJECTION
	▽=0	4 PLACES ± .010	mm INCH	DRAWN BY	DATE	TITLE
	▽=0	3 PLACES ± .010	DLT	1990/10/12	ASSEMBLY, VERTICAL MODULAR JACKS	
	▽=0	2 PLACES ± 0.25	CHECKED BY	DATE		
	▽=0	1 PLACE ± .010	DAP	1990/10/12		
	0 PLACE ± .010	APPROVED BY	DATE			
		FSM ITH	2012/02/14			
		ANGULAR ±1/2°	PARTIAL NO.	DOCUMENT NO.	SDA-42410-****	SHEET NO. 2 OF 4
		DRAFT WHERE APPLICABLE MUST REMAIN WITHIN DIMENSIONS	SEE SHEET 4	THIS DRAWING CONTAINS INFORMATION THAT IS PROPRIETARY TO MOLEX INCORPORATED AND SHOULD NOT BE USED WITHOUT WRITTEN PERMISSION		

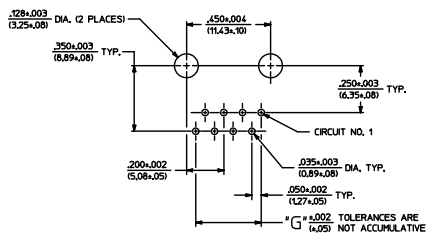
NOTES:
1) MATERIALS: HOUSING PARTS ARE MADE OF POLYESTER, RATED UL, 94 V-0, COLOR IS BLACK; TERMINALS ARE .015(0.38) THICK PHOSPHOR BRONZE.
2) TERMINAL PLATING OPTIONS PER ES-88-444-:
A - SELECT GOLD IN CONTACT AREA; 50 MICRONS MIN. SELECT MATTE TN IN PC TAIL AREA; 100 MICRONS MIN. WITH OVERALL NICKEL UNDERPLATE; 50 MICRONS MIN.
3) THESE MODULAR JACKS MEET THE PERFORMANCE REQUIREMENTS OF MOLEX PRODUCT SPECIFICATION PS-42410.
4) CONNECTORS ARE TO BE PACKED IN THERMOFORMED TRAYS, PER PACKAGING SPECIFICATION PK-42410-492.
5) ALL JACKS ARE DESIGNED TO BE USED WITH .062(1.57) OR .125(3.18) THICK P.C. BOARDS.
6) ALL JACKS CONFORM TO AND ACCEPT PLUGS WHICH CONFORM TO FCC RULES AND REGULATIONS PART 68, SUBPART F, WHEN PLATED WITH 50 MICRONS OF GOLD.
7) ALL JACKS MUST BE CAPABLE OF FITTING INTO MOLEX GAGE G-42410 (CONNECTOR SIZE 4).
8) SEE SHEETS 1 & 4 FOR CONNECTOR SIZE 4.
9) SEE SHEETS 2 & 4 FOR CONNECTOR SIZE 6.
10) SEE SHEET 4 FOR ASSEMBLY ITEM NUMBERS.
11) PART CONFORMS TO CLASS "B" REQUIREMENTS OF COSMETIC SPECIFICATION PS-45499-002.
12) ENGRAVED NUMBERS ON HOUSING BODY ARE FOR MOLDING IDENTIFICATION ONLY. THEY ARE NOT INTENDED FOR ASSEMBLY IDENTIFICATION PURPOSES.
13) ALL UNTOLERANCED DIMENSIONS ARE SHOWN FOR REFERENCE ONLY.

P.C. BOARD THICKNESS	DIM. "D" (MTG. PEGS)	DIM. "F" (P.C. TAILS)
.062(1.57)	.128 (3.25)	.120 +.015/-.025 (3.05 +.38/- .63)
.125(3.18)	.191 (4.85)	.205 +.015/-.025 (5.21 +.38/- .63)

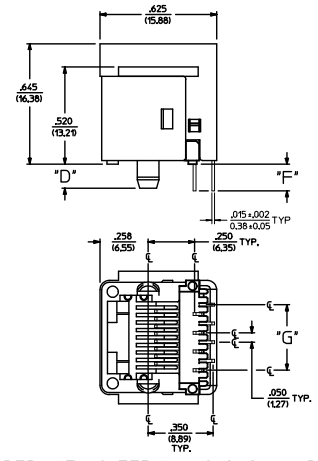
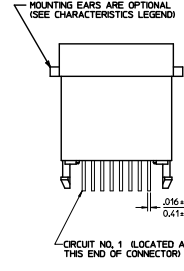
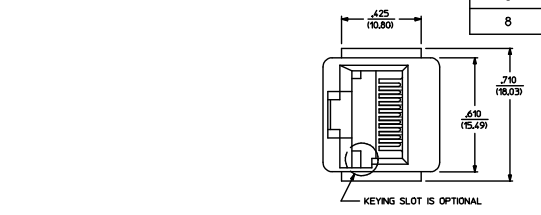
CONNECTOR SIZE	CIRCUIT SIZE	DIM. "G"
8	8	.350 (8.89)
8	6	.250 (6.35)
8	4	.150 (3.81)
8	2	.050 (1.27)



PANEL CUT-OUT FOR CONNECTOR SIZE 8



P.C. BOARD LAYOUT FOR CONNECTOR SIZE 8
VIEWED FROM COMPONENT SIDE



SIZE 8 MODULAR JACK LOADED WITH 8 TERMINALS SHOWN ABOVE
(SEE SHEET 4 FOR PART NUMBER AVAILABILITY)

QUALITY SYMBOLS SEE SHEET 1 EC NO. 067205-2536 2015/07/24 DRAWING/REV CHKD/BELL 2015/07/24 APPR/SMITH 2012/02/14 REV 1	GENERAL TOLERANCES (UNLESS SPECIFIED)		DIMENSION STYLE IN/MM		SCALE 4:1	DESIGN UNITS INCH	THIRD ANGLE PROJECTION	
	4 PLACES 3 PLACES 2 PLACES 1 PLACE 0 PLACE	+.005 +.010 +.025 +.050 +.100	INCH +.005 +.010 +.025 +.050 +.100	DRAWN BY GLT	DATE 1990/10/12	TITLE ASSEMBLY; VERTICAL MODULAR JACKS		
				CHECKED BY BAP	DATE 1990/10/12	SHEET NO. 3 OF 4		
				APPROVED BY FSMITH	DATE 2012/02/14	DOCUMENT NO. SDA-42410-****		

DRAFT WHERE APPLICABLE MUST REMAIN WITHIN DIMENSIONS

ANGULAR ±1/2°

SEE SHEET 4

THIS DRAWING CONTAINS INFORMATION THAT IS PROPRIETARY TO MOLEX INCORPORATED AND SHOULD NOT BE USED WITHOUT WRITTEN PERMISSION

SIZE 4 VERTICAL MODJACK ASSEMBLIES					
PART CHARACTERISTICS					
ASSEMBLY ITEM NUMBER	EXTERNAL CONNECTOR SIZE	NUMBER OF POSITIONS	P.C. BOARD THICKNESS	MOUNTING EARS OPTION	TERMINAL PLATING OPTION
42410-4168	4 POS. BODY	4	.062(1/57)	YES	A
42410-4170	↓	↓	.062(1/57)	NO	A
42410-4264	↓	↓	.125(3/16)	YES	A
42410-4266	4 POS. BODY	4	.125(3/16)	NO	A
42410-4312	4 POS. BODY	2	.062(1/57)	YES	A
42410-4314	↓	↓	.062(1/57)	NO	A
42410-4408	↓	↓	.125(3/16)	YES	A
42410-4440	4 POS. BODY	2	.125(3/16)	NO	A

SIZE 6 VERTICAL MODJACK ASSEMBLIES					
PART CHARACTERISTICS					
ASSEMBLY ITEM NUMBER	EXTERNAL CONNECTOR SIZE	NUMBER OF POSITIONS	P.C. BOARD THICKNESS	MOUNTING EARS OPTION	TERMINAL PLATING OPTION
42410-6168	6 POS. BODY	6	.062(1/57)	YES	A
42410-6170	↓	↓	.062(1/57)	NO	A
42410-6264	↓	↓	.125(3/16)	YES	A
42410-6266	6 POS. BODY	6	.125(3/16)	NO	A
42410-6312	6 POS. BODY	4	.062(1/57)	YES	A
42410-6314	↓	↓	.062(1/57)	NO	A
42410-6320	↓	↓	.062(1/57)	YES	B
42410-6408	↓	↓	.125(3/16)	YES	A
42410-6440	6 POS. BODY	4	.125(3/16)	NO	A
42410-6456	6 POS. BODY	2	.062(1/57)	YES	A
42410-6458	↓	↓	.062(1/57)	NO	A
42410-6552	↓	↓	.125(3/16)	YES	A
42410-6554	6 POS. BODY	2	.125(3/16)	NO	A

SIZE 8 VERTICAL MODJACK ASSEMBLIES						
PART CHARACTERISTICS						
ASSEMBLY ITEM NUMBER	EXTERNAL CONNECTOR SIZE	NUMBER OF POSITIONS	P.C. BOARD THICKNESS	KEYING OPTION	MOUNTING EARS OPTION	TERMINAL PLATING OPTION
42410-8312	8 POS. BODY	8	.062(1/57)	NO	YES	A
42410-8314	↓	↓	.062(1/57)	NO	NO	A
42410-8360	↓	↓	.062(1/57)	YES	YES	A
42410-8362	↓	↓	.062(1/57)	YES	NO	A
42410-8504	↓	↓	.125(3/16)	NO	YES	A
42410-8506	↓	↓	.125(3/16)	NO	NO	A
42410-8552	↓	↓	.125(3/16)	YES	YES	A
42410-8554	8 POS. BODY	8	.125(3/16)	YES	NO	A
42410-8600	8 POS. BODY	6	.062(1/57)	NO	YES	A
42410-8602	↓	↓	.062(1/57)	NO	NO	A
42410-8648	↓	↓	.062(1/57)	YES	YES	A
42410-8650	↓	↓	.062(1/57)	YES	NO	A
42410-8792	↓	↓	.125(3/16)	NO	YES	A
42410-8794	↓	↓	.125(3/16)	NO	NO	A
42410-8840	↓	↓	.125(3/16)	YES	YES	A
42410-8842	8 POS. BODY	6	.125(3/16)	YES	NO	A
42410-8888	8 POS. BODY	4	.062(1/57)	NO	YES	A
42410-8890	↓	↓	.062(1/57)	NO	NO	A
42410-8936	↓	↓	.062(1/57)	YES	YES	A
42410-8938	↓	↓	.062(1/57)	YES	NO	A
42410-9080	↓	↓	.125(3/16)	NO	YES	A
42410-9082	↓	↓	.125(3/16)	NO	NO	A
42410-9128	↓	↓	.125(3/16)	YES	YES	A
42410-9130	8 POS. BODY	4	.125(3/16)	YES	NO	A
42410-9176	8 POS. BODY	2	.062(1/57)	NO	YES	A
42410-9178	↓	↓	.062(1/57)	NO	NO	A
42410-9224	↓	↓	.062(1/57)	YES	YES	A
42410-9226	↓	↓	.062(1/57)	YES	NO	A
42410-9368	↓	↓	.125(3/16)	NO	YES	A
42410-9370	↓	↓	.125(3/16)	NO	NO	A
42410-9416	↓	↓	.125(3/16)	YES	YES	A
42410-9418	8 POS. BODY	2	.125(3/16)	YES	NO	A

SEE SHEET 1 EC NO. 167205-2536 2015/07/24 ZDR/ANN/01EN CHK/DBELL 2015/07/24 AP/RES/31 2015/07/24 BR/	QUALITY SYMBOLS	GENERAL TOLERANCES (UNLESS SPECIFIED)	DIMENSION STYLE	SCALE	DESIGN UNITS	THIRD ANGLE PROJECTION
	▽=0	4 PLACES +--- ----	IN/MM	1:1	INCH	ASSEMBLY, VERTICAL MODULAR JACKS
	▽=0	3 PLACES +--- ----				
	▽=0	2 PLACES +--- ----				
		1 PLACE +--- ----				DOCUMENT NO. SDA-42410-****
		0 PLACE +--- ----				SHEET NO. 4 OF 4
		ANGULAR ±1/2°				THIS DRAWING CONTAINS INFORMATION THAT IS PROPRIETARY TO MOLEX INCORPORATED AND SHOULD NOT BE USED WITHOUT WRITTEN PERMISSION