

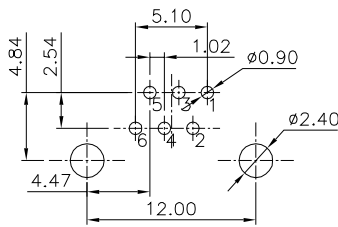
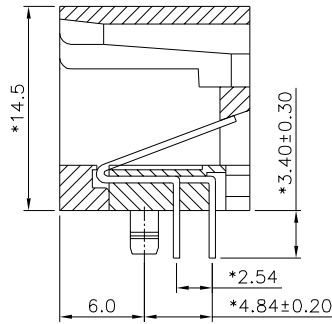
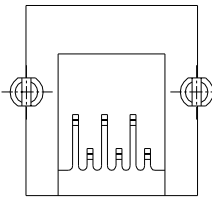
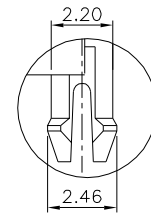
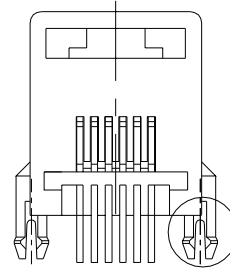
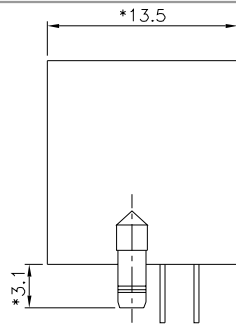
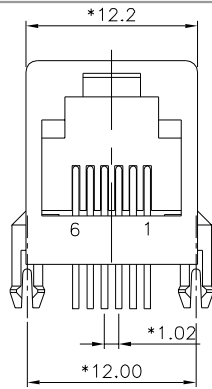
Excellent Integrated System Limited

Stocking Distributor

Click to view price, real time Inventory, Delivery & Lifecycle Information:

[Pulse Electronics Corporation](#)
[E5566-Q0LK22-L](#)

For any questions, you can email us directly:
sales@integrated-circuit.com



PC Board Layout T=1.6mm

Component Side Shown Tolerance±0.05mm

NOTES:

ELECTRICAL:

1. VOLTAGE RATING : 125 VAC RMS.
2. CURRENT RATING : 1.5 AMP.
3. CONTACT RESISTANCE : 45 MILLIOHMS MAX.
4. INSULATION RESISTANCE: 1000 MEGOHMS MIN @ 500 VDC.
5. DIELECTRIC STRENGTH : 1000 VAC RMS 60Hz, 1MIN.

MECHANICAL:

1. HOUSING MATERIAL : GLASS FILLED NYLON UL94V-0, GRAY
2. CONTACT MATERIAL : PHOSPHOR BRONZE ϕ 0.46mm.
3. PLATING : GOLD PLATING OVER NICKEL.
4. OPERATING LIFE : 750 CYCLES MIN.
5. PCB RETENTION PRE-SOLDER : 1 LB MIN.
6. PCB RETENTION POST-SOLDER: 10 LBS MIN.

ENVIRONMENTAL:

1. STORAGE TEMPERATURE : -40°C TO +85°C.
2. OPERATION TEMPERATURE : -40°C TO +85°C.
3. WAVE SOLDERING TEMPERATURE: 230~250°C (3~5 SECONDS)
4. RoHS COMPLIANT.

MATES WITH MODULAR PLUG CONFORMING TO FCC PART 68, SUBPART F.

CUL FILE NO. E163191

PART NUMBER

E5566-Q0LK22-L

DETAILED LIST: TOLERANCES EXCEPT AS NOTED MM .0 ± 0.2 .00 ± 0.15 .000 ± 0.075 ANGLES ± 0.5 THIRD ANGLE PROJECTION	RoHS Compliant		
	TITLE MINI L/P PCB JACK		
DRAWING NO. CE553027-LC		/PART NO. SEE TABLE	
SCALE : 4:1		DO NOT SCALE DRAWING	
SHEET 1 OF 1		SIZE A3 REV 0	

8 | 7 | 6 | 5 | 4 | 3 | 2 | 1