

Excellent Integrated System Limited

Stocking Distributor

Click to view price, real time Inventory, Delivery & Lifecycle Information:

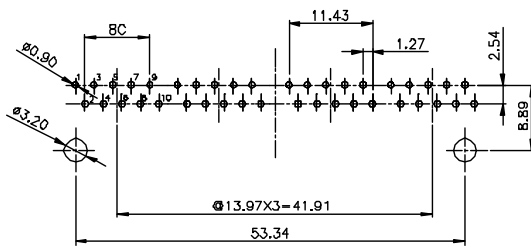
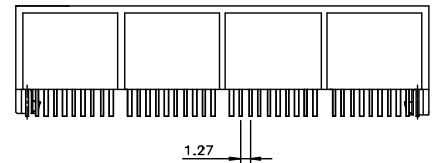
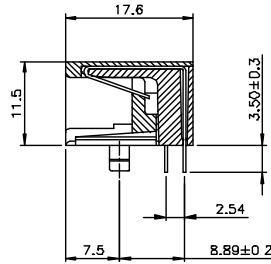
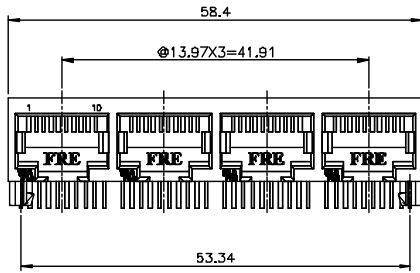
[Pulse Electronics Corporation](#)
[E5608-00C062-L](#)

For any questions, you can email us directly:

sales@integrated-circuit.com

A1RFRD10

REVISION RECORD				
REV	ECC	DESCRIPTION	DRAFT	CHKD



PCB Layout t=1.6MM
Component Side Shown

NOTES:

ELECTRICAL:

- VOLTAGE RATING: 125 VAC RMS.
- CURRENT RATING: 1.5 AMP.
- CONTACT RESISTANCE: 30 MILLIOHMS MAX.
- INSULATION RESISTANCE: 1000 MEGOHMS MIN @ 500 VDC.
- DIELECTRIC STRENGTH: 1000 VAC RMS 60Hz, 1MIN.

MECHANICAL:

- HOUSING MATERIAL: GLASS FILLED POLYESTER UL 94V-0.
- CONTACT MATERIAL: PHOSPHOR BRONZE Ø0.46MM
- PLATING: GOLD PLATING OVER NICKEL.
- OPERATING LIFE: 750 CYCLES MIN.
- PCB RETENTION PRE-SOLDER: 1 LB MIN
- PCB RETENTION POST-SOLDER: 10 LBS MIN.

ENVIRONMENTAL:

- STORAGE: -40°C TO +85°C.
- OPERATION: -40°C TO +85°C.

MATES WITH MODULAR PLUG CONFORMING TO

FCC PART 68, SUBPART F.

CUL FILE NO. E163191

PART NUMBER: E560X-00C06X

- NO. OF CONTACT
- 8-8 CONTACTS
 - 1- 10 CONTACTS
 - 1- 3u" 2- 6u" 3-15u"
 - 4-30u" 5-50u" 6-Pd20u"

TOLERANCES EXCEPT AS NOTED FINISH : QTY : FINISH : SCALE : 2:1	QTD: PK DATE: 12/23/03 CHG: MING-WE DATE: 12/23/03 MFD: LHM DATE: 12/23/03 APPL: YUAN DATE: 12/23/03	FULL RISE ELECTRONIC CO., LTD TITLE 11.5 SIDE ENTRY PCB GANG JACK 10P DRAWING NO. GE563AB8 /PART NO. SEE NOTE DO NOT SCALE DRAWING	SIZE A3 REV 0
	MATERIAL : QTY : FINISH :		SHEET 1 OF 1
	MATE: 1- 3u" 2- 6u" 3-15u" 4-30u" 5-50u" 6-Pd20u"		SHEET 1 OF 1
	FINISH : SCALE : 2:1		SHEET 1 OF 1

8 | 7 | 6 | 5 | 4 | 3 | 2 | 1