

Excellent Integrated System Limited

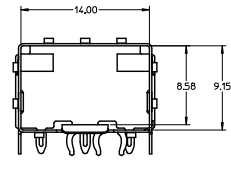
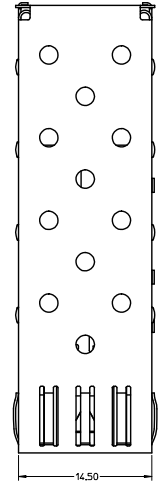
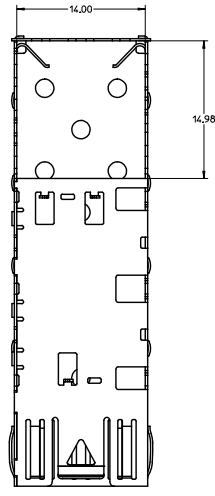
Stocking Distributor

Click to view price, real time Inventory, Delivery & Lifecycle Information:

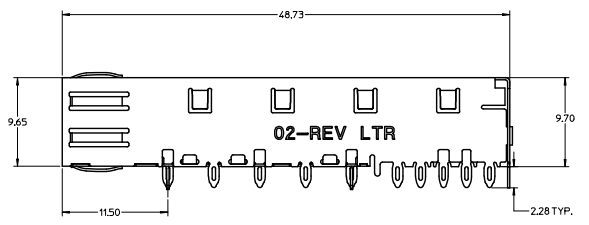
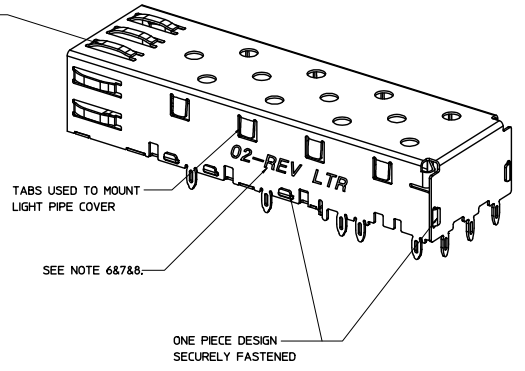
[Molex Connector Corporation](#)
[0747370002](#)

For any questions, you can email us directly:
sales@integrated-circuit.com

MM 3D MODEL: EM-74737-002-ASSY



SPRING FINGER GASKET WITH TWO POINTS OF CONTACT. COMPLIES WITH (SFP) MSA BOARD AND BEZEL LOCATIONS.



- NOTES:
- PRESS FIT LEGS, 2.28mm LONG. 1.57mm MINIMUM PCB THICKNESS.
 - THIS CAGE IS FOR SINGLE SIDED USE ONLY.
 - CAN BE USED WITH THE FOLLOWING LIGHT PIPE PART NUMBERS:
747260001 - LIGHT PIPE FROM BACK TO TOP (REFER TO DOCUMENT SD-74726-001)
747260002 - LIGHT PIPE FROM SIDE TO TOP (REFER TO DOCUMENT SD-74726-002)
 - MATERIAL: COPPER ALLOY
PLATING: PRE-PLATED WITH NICKEL
 - NO RoHS EXEMPTIONS.
 - REVISION LETTER IS FOLLOWING MOLEX 3D MODEL.
 - INSERT TO CHANGE ENGRAVING FOR LAST TWO DIGITS OF PART NUMBER OR 3D REVISION.
 - INSERT TO IDENTIFY ADDITIONAL TOOLING STARTING WITH TOOL #2 AS FOLLOWS:
LAST TWO DIGITS OF PART NUMBER, TOOL NUMBER AND REVISION LETTER (E.G., 02-3J)

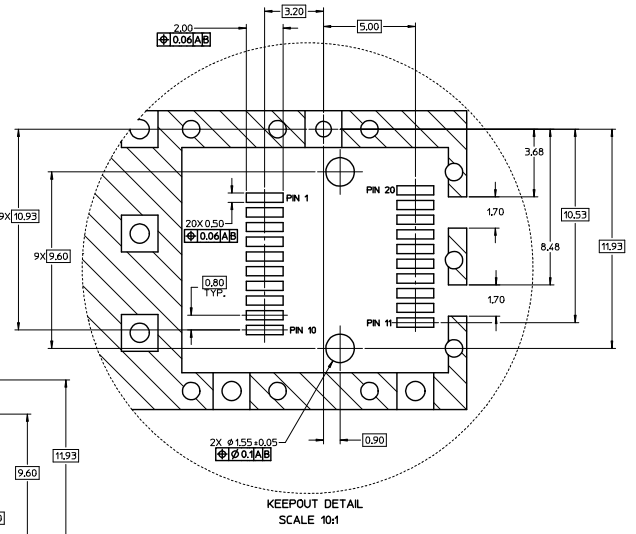
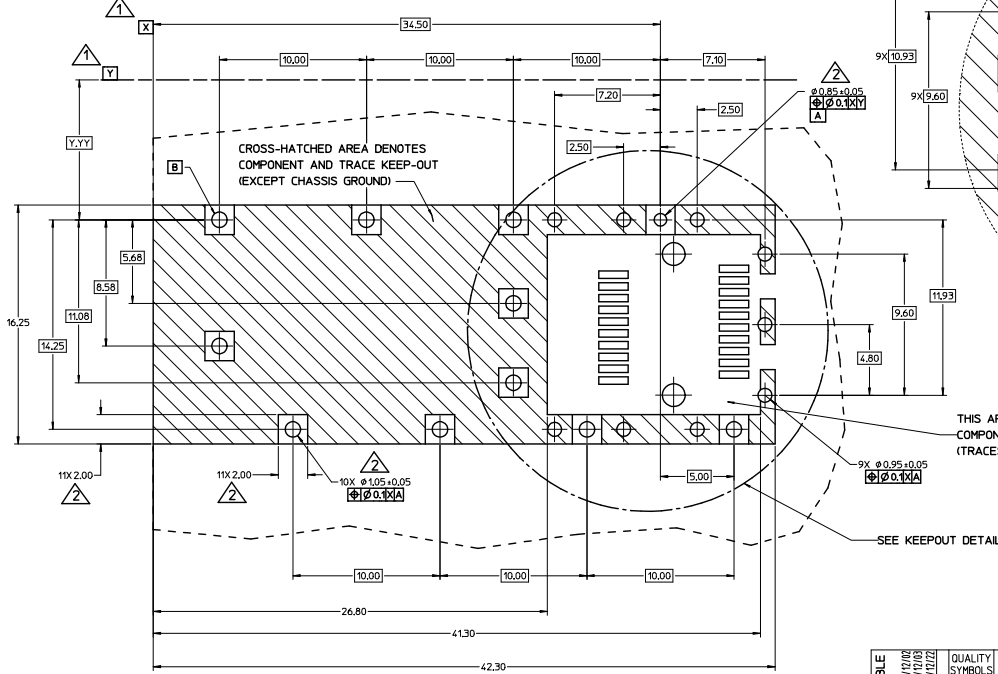
SEE REVISION TABLE EC NO. 074737-2800 DRAWN BY: DRINKLUDZ 28/11/07 CHECKED BY: CHIKSTANG 16 28/11/07 APPROVED BY: JAPPEKUN 28/11/07 REVISION: H	QUALITY SYMBOLS	GENERAL TOLERANCES (UNLESS SPECIFIED)	DIMENSION STYLE	SCALE	DESIGN UNITS	THIRD ANGLE PROJECTION	
	4 PLACES ± 0.10 3 PLACES ± 0.15 2 PLACES ± 0.20 1 PLACE ± 0.25 0 PLACE ± 0.30	mm INCH	MM ONLY	5:1	METRIC	DRAWN BY: CLOX 2007/10/18 CHECKED BY: RMAHMOOD 2007/10/18 APPROVED BY: RMAHMOOD 2007/10/18	SFP ONE PIECE CAGE PRESS-FIT (0.090 LEGS)
	ANGULAR ± 1° DRAFT WHERE APPLICABLE MUST REMAIN WITHIN DIMENSIONS					MATERIAL NO. 747370002 DOCUMENT NO. SD-74737-002	SHEET NO. 1 OF 4
	THIS DRAWING CONTAINS INFORMATION THAT IS PROPRIETARY TO MOLEX INCORPORATED AND SHOULD NOT BE USED WITHOUT WRITTEN PERMISSION						

▲ DATUM AND BASIC DIMENSIONS ESTABLISHED BY CUSTOMER.

▲ PADS AND VIAS ARE CHASSIS GROUND.

3. HOLE LAYOUT SHOWN IS FOR SINGLE SIDED MOUNTING ONLY.

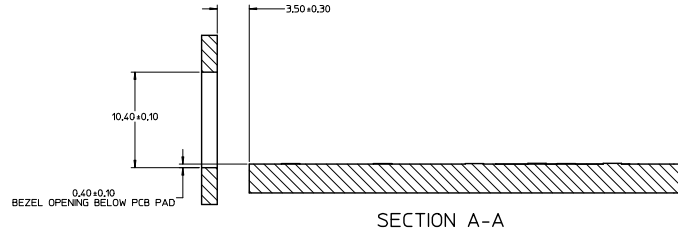
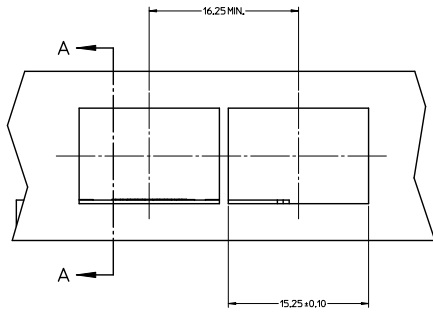
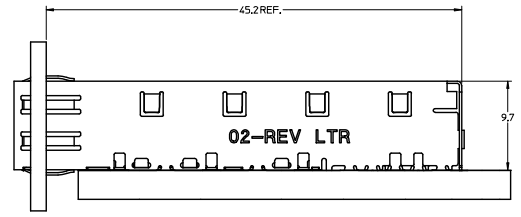
4. CONNECTOR PAD LAYOUT PER SFP MSA, WILL ACCOMMODATE MOLEX CONNECTOR SERIES 74441 OR EQUIVALENT.



THIS AREA DENOTES COMPONENT KEEP-OUT (TRACES ALLOWED)

SEE KEEP-OUT DETAIL

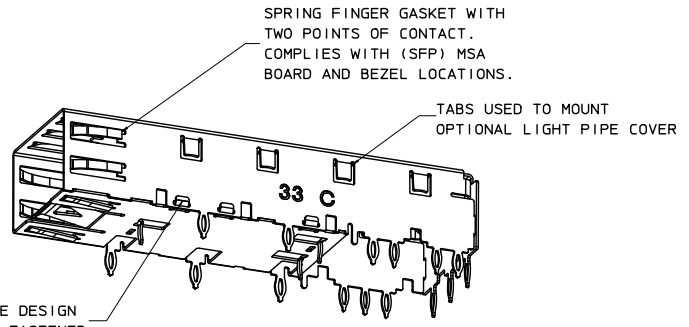
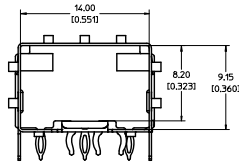
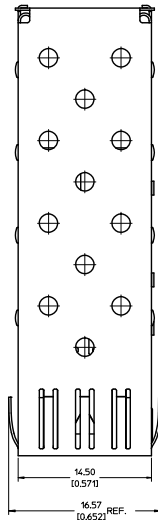
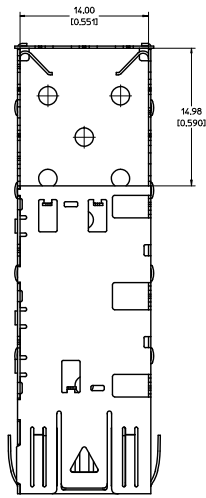
SEE REVISION TABLE ECN NO. 0747370002-2800 DRAWN BY: CHEN WANG CHECKED BY: CHEN WANG APPROVED BY: CHEN WANG DATE: 2011/12/02 DATE: 2011/12/03 DATE: 2011/12/22	QUALITY SYMBOLS	GENERAL TOLERANCES (UNLESS SPECIFIED)	DIMENSION STYLE	SCALE	DESIGN UNITS	THIRD ANGLE PROJECTION
	▽=0	mm	MM ONLY	8:1	METRIC	☉
	▽=0	INCH				
	▽=0					
			DRAWN BY: CLOX	DATE: 2007/10/11/18	TITLE: SFP ONE PIECE CAGE PRESS-FIT (0.090 LEGS)	
			CHECKED BY: RMAHMOOD	DATE: 2007/10/11/18		
			APPROVED BY: RMAHMOOD	DATE: 2007/10/11/18		
			ANGULAR ± 1°	MATERIAL NO. 747370002	DOCUMENT NO. SD-74737-002	SHEET NO. 2 OF 4
			DRAFT WHERE APPLICABLE MUST REMAIN WITHIN DIMENSIONS	SIZE D	THIS DRAWING CONTAINS INFORMATION THAT IS PROPRIETARY TO MOLEX INCORPORATED AND SHOULD NOT BE USED WITHOUT WRITTEN PERMISSION	



SEE REVISION TABLE EC. NO. 0747370002-2800 DRAWN BY: 28/11/02 CHECKED BY: 28/11/02 APPROVED BY: 28/11/02 DATE: 28/11/02	QUALITY SYMBOLS	GENERAL TOLERANCES (UNLESS SPECIFIED)	DIMENSION STYLE	SCALE	DESIGN UNITS	THIRD ANGLE PROJECTION
	$\nabla=0$ $\nabla=0$ $\nabla=0$	mm INCH 4 PLACES ± --- ± --- 3 PLACES ± --- ± --- 2 PLACES ± 0.13 ± --- 1 PLACE ± 0.25 ± --- 0 PLACE ± ±	MM ONLY	5:1	METRIC	
	DRAWN BY: CCOX CHECKED BY: RMAHMOOD APPROVED BY: RMAHMOOD DATE: 2007/10/18 DATE: 2007/10/18 DATE: 2007/10/18	MATERIAL NO. 747370002	DOCUMENT NO. SD-74737-002			
	DRAFT WHERE APPLICABLE MUST REMAIN WITHIN DIMENSIONS	SIZE D	THIS DRAWING CONTAINS INFORMATION THAT IS PROPRIETARY TO MOLEX INCORPORATED AND SHOULD NOT BE USED WITHOUT WRITTEN PERMISSION			

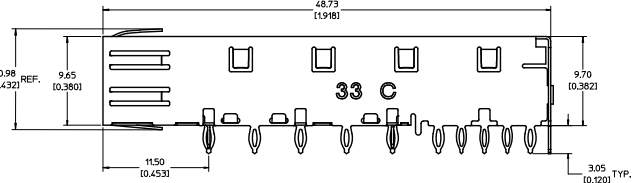
REVISION TABLE		
DATE	REV	
2007/01/17	A	INITIAL RELEASE
2007/01/24	B	UPDATED VIEWS
2007/02/08	C	ADDED NOTE 5
2007/03/06	D	ADDED SHEETS 2 AND 3
2007/01/23	E	UPDATED 2D VIEWS TO REFLECT CHG'S MADE TO EM-74737-002 REV E.
2007/04/25	F	[1] ADDED REV SHEET; [2] UPDATED REV NOTES A-D; [3] UPDATED DRAWING TO REFLECT CHG'S MADE TO EM-74737-002-ASSY REV D; [4] ON SHT1 ROTATED BTM_VIEW 180 DEGREES.
2007/11/27	G	[1] UPDATED VIEWS TO MATCH EM-74737-002-ASSY REV E.
2014/12/02	H	1. ADDED *MM 3D MODEL: EM-74737-002-ASSY* ON LEFT TOP CORNER. [SHEET 1] 2. ADDED NOTE 6, 7, 8. [SHEET 1] 3. CHANGED NOTES TO *NO RoHS EXEMPTIONS*. [SHEET 1] 4. REMOVED ALL INCH UNIT. [SHEET 1-3]

SEE REVISION TABLE EC NO. CE2005-2800 DRAWN LUD 20/11/02 CHECKED STANG 28/11/03 APPROVED 28/11/03 DATE	QUALITY SYMBOLS	GENERAL TOLERANCES (UNLESS SPECIFIED)	DIMENSION STYLE	SCALE	DESIGN UNITS	THIRD ANGLE PROJECTION																		
	$\nabla=0$ $\nabla=0$ $\nabla=0$	<table border="1"> <tr> <th></th> <th>mm</th> <th>INCH</th> </tr> <tr> <td>4 PLACES</td> <td>± 0.001</td> <td>± 0.0005</td> </tr> <tr> <td>3 PLACES</td> <td>± 0.002</td> <td>± 0.0008</td> </tr> <tr> <td>2 PLACES</td> <td>± 0.01</td> <td>± 0.001</td> </tr> <tr> <td>1 PLACE</td> <td>± 0.25</td> <td>± 0.01</td> </tr> <tr> <td>0 PLACE</td> <td>± 0.5</td> <td>± 0.02</td> </tr> </table>		mm	INCH	4 PLACES	± 0.001	± 0.0005	3 PLACES	± 0.002	± 0.0008	2 PLACES	± 0.01	± 0.001	1 PLACE	± 0.25	± 0.01	0 PLACE	± 0.5	± 0.02	MM ONLY DRAWN BY: CCOX DATE: 2007/10/1/18 CHECKED BY: RMAHMOOD DATE: 2007/10/1/18 APPROVED BY: RMAHMOOD DATE: 2007/10/1/18	1:1	METRIC	
		mm	INCH																					
	4 PLACES	± 0.001	± 0.0005																					
3 PLACES	± 0.002	± 0.0008																						
2 PLACES	± 0.01	± 0.001																						
1 PLACE	± 0.25	± 0.01																						
0 PLACE	± 0.5	± 0.02																						
ANGULAR ± 1.0 DRAFT WHERE APPLICABLE MUST REMAIN WITHIN DIMENSIONS	MATERIAL NO. 747370002 SIZE D THIS DRAWING CONTAINS INFORMATION THAT IS PROPRIETARY TO MOLEX INCORPORATED AND SHOULD NOT BE USED WITHOUT WRITTEN PERMISSION	TITLE: SFP ONE PIECE CAGE PRESS-FIT (0.090 LEGS) DOCUMENT NO. SD-74737-002 			SHEET NO. 4 OF 4																			



ONE PIECE DESIGN
SECURELY FASTENED

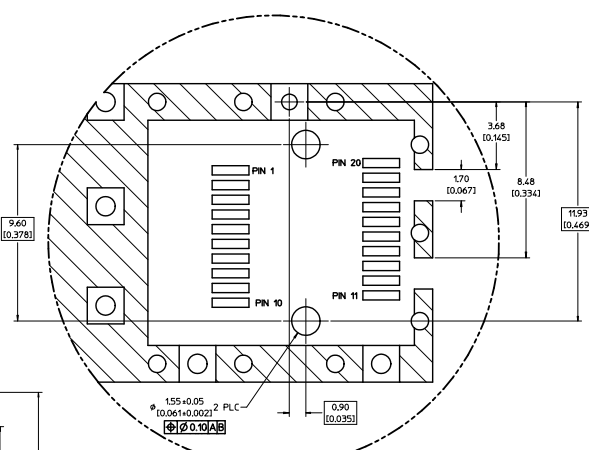
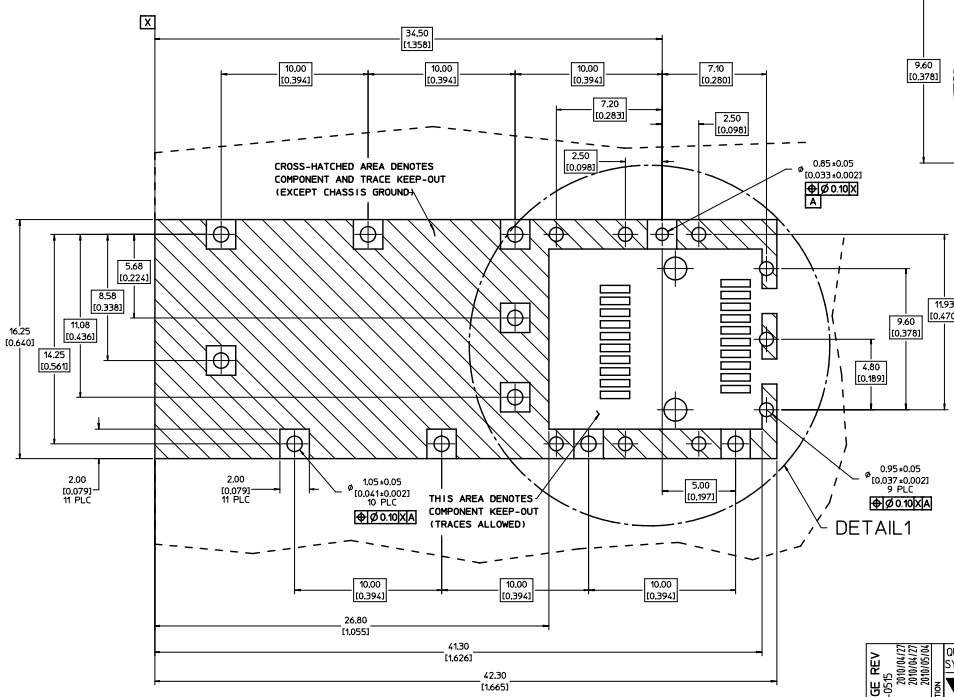
CAGE IDENTIFICATION
LAST 2 DIGITS P/N
AND REV LETTER
(ex: 29 X)



- NOTES:
- PRESS FIT LEGS, 0.120 INCHES LONG.
1.57 [0.062] MINIMUM PCB THICKNESS.
 - THIS CAGE IS FOR SINGLE SIDED USE ONLY.
 - CAN BE USED WITH THE FOLLOWING LIGHT PIPE PART NUMBERS:
747260001 - LIGHT PIPE FROM BACK TO TOP
(REFER TO DOCUMENT SD-74726-001)
747260002 - LIGHT PIPE FROM SIDE TO TOP
(REFER TO DOCUMENT SD-74726-002)
 - MATERIAL: COPPER ALLOY
PLATING: PRE-PLATED WITH NICKEL
 - THIS PART MEETS THE RESTRICTION OF HAZARDOUS SUBSTANCES IN ELECTRICAL AND ELECTRONIC EQUIPMENT (ROHS) DIRECTIVE (2002/95/EC).

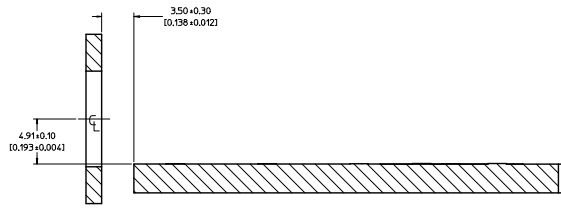
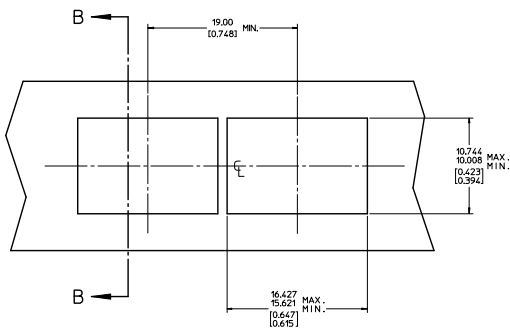
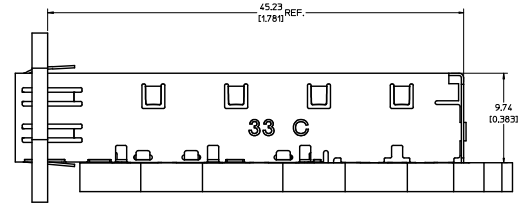
REV DMS-CAGE REV EC INCUS72010-05 DRWNGREGT 2009/07 CHKOKANOTA APPRZJAN/09/09 DESGREGTAKA	QUALITY SYMBOLS	GENERAL TOLERANCES (UNLESS SPECIFIED)	DIMENSION STYLE	SCALE	DESIGN UNITS	THIRD ANGLE PROJECTION	
	4 PLACES ± --- ± --- 3 PLACES ± --- ± 0.005 2 PLACES ± 0.13 ± 0.01 1 PLACE ± 0.25 ± --- ANGULAR ± 1 °	MM/IN	5:1	METRIC	DRAWN BY: JRESENDE CHECKED BY: JRESENDE DATE: 2009/09/28 DATE: 2009/09/28	TITLE: SFP ONE PIECE CAGE PRESS-FIT (0.120 LEGS) W/ MODIFIED LATCH TANG PARTIAL NO: 747370033 DOCUMENT NO: SD-74737-0033	MOLEX INCORPORATED SHEET NO: 1 OF 3
	DRAFT WHERE APPLICABLE MUST REMAIN WITHIN DIMENSIONS	SIZE D	THIS DRAWING CONTAINS INFORMATION THAT IS PROPRIETARY TO MOLEX INCORPORATED AND SHOULD NOT BE USED WITHOUT WRITTEN PERMISSION				

1. PADS AND VIAS ARE CHASSIS GROUND.
2. HOLE LAYOUT SHOWN IS FOR SINGLE SIDED MOUNTING ONLY.
3. CONNECTOR PAD LAYOUT PER SFP MSA. WILL ACCOMMODATE MOLEX CONNECTOR SERIES 74441 OR EQUIVALENT.



DETAIL1
SCALE 10:1

REV: DNS CAGE REV EC: INCLUSY 2008/07 EDR: WISEST 2010/07 CHECK: ANITA 2010/07 APPR: ANITA 2010/07 DESIGNED BY:	QUALITY SYMBOLS	GENERAL TOLERANCES (UNLESS SPECIFIED)	DIMENSION STYLE	SCALE	DESIGN UNITS	THIRD ANGLE PROJECTION
	$\nabla=0$ $\nabla=0$	4 PLACES ± 0.15 ± 0.005 3 PLACES ± 0.13 ± 0.01 2 PLACES ± 0.25 ± 0.01 1 PLACE ± 0.25 ± 0.01 ANGULAR ± 1°	MM/IN	8:1	METRIC	
	DRAWN BY: JRESENDE CHECKED BY: JRESENDE APPROVED BY: JRESENDE	DATE: 2009/09/28 DATE: 2009/09/28 DATE: 2009/09/28	TITLE			SFP ONE PIECE CAGE PRESS-FIT (0.120 LEGS) W/ MODIFIED LATCH TANG
	MATERIAL NO: 747370033 SIZE: D	DATE: 2009/09/28	MOLEX INCORPORATED	DOCUMENT NO: SD-74737-0033 SHEET NO: 2 OF 3	THIS DRAWING CONTAINS INFORMATION THAT IS PROPRIETARY TO MOLEX INCORPORATED AND SHOULD NOT BE USED WITHOUT WRITTEN PERMISSION	



SECTION B-B

REV. DNS. CAGE REV. EC INCLUSTY 2005/05 CHOKKASEEST 2006/07 CHOKKANITA 2006/07 APPRELIANANTIA 2006/08 REV.	QUALITY SYMBOLS	GENERAL TOLERANCES (UNLESS SPECIFIED)	DIMENSION STYLE	SCALE	DESIGN UNITS	THIRD ANGLE PROJECTION	
	$\nabla=0$ $\nabla=0$	4 PLACES ± --- ± --- 3 PLACES ± --- ± 0.005 2 PLACES ± 0.13 ± 0.01 1 PLACE ± 0.25 ± --- ANGULAR ± 1 °	MM/IN	5:1	METRIC		
	DRAWN BY JRESENDE 2009/09/28 CHECKED BY JRESENDE 2009/09/28 APPROVED BY JRESENDE 2009/09/28	MATERIAL NO. 747370033 SIZE D	DATE 2009/09/28 DATE 2009/09/28 DATE 2009/09/28	TITLE SFP ONE PIECE CAGE PRESS-FIT (0.120 LEGS) W/ MODIFIED LATCH TANG	DOCUMENT NO. SD-74737-0033	SHEET NO. 3 OF 3	MOLEX INCORPORATED
	DRAFT WHERE APPLICABLE MUST REMAIN WITHIN DIMENSIONS THIS DRAWING CONTAINS INFORMATION THAT IS PROPRIETARY TO MOLEX INCORPORATED AND SHOULD NOT BE USED WITHOUT WRITTEN PERMISSION						