

Excellent Integrated System Limited

Stocking Distributor

Click to view price, real time Inventory, Delivery & Lifecycle Information:

[Apem Inc.](#)
[MAL6B](#)

For any questions, you can email us directly:
sales@integrated-circuit.com

MA SERIES - MICRO-LIMIT SWITCHES



SPECIFICATIONS SUBJECT TO CHANGE WITHOUT NOTICE

FEATURES

- **Ratings:** 16 Amps 250 VAC (resistive load). 4 Amps 250 VAC (motor load) or 3 Amps 250 VAC (resistive load). 0.1 Amps 250 VAC (motor load).
- **Single pole CO (change-over or alternate action), NC (normally closed momentary) and NO (normally open momentary) configurations.**
- **Close tolerance switching action with long life (10,000,000 mechanical cycles min.).**
- **Pin plunger, hinge lever or roller lever actuator options.**

MATERIALS

Contacts:	Stationary: Nicker silver	Shorting: Beryllium copper
Actuator:	FS 161 (UL94V-O)	
Case & cover:	PBT (UL94V-O)	
Terminals:	Silver plated copper/zinc	

AGENCY RECOGNITION



Approval pending.

SPECIFICATIONS

Operating force:	≤ 12.59 oz. (343 grams) approx. for 16 Amp models
	≤ 0.72 oz. (20 grams) approx. for 3 Amp models
Pretravel:	≤ .047" (1.2mm)
Overtravel:	≥ .059" (1.5mm) min.
Movement differential:	≤ .016" (0.4mm)
Free position:	≤ .649" (16.5mm)
Operating position:	.578" ± .020" (14.7mm ± 0.5mm)
Operating temperature:	-40°C to +85°C
Contact gap:	less than .118" (3mm)
Tracking resistance:	> PTI 175

H

MA SERIES - MICRO-LIMIT SWITCHES

ORDER FORMAT

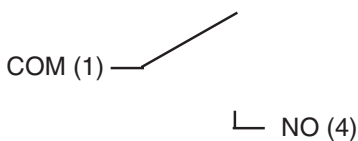
M A A 6 B

Series	Circuit & quick-connect terminals	Switch rating	Actuator style
MA	A Normally open (standard) .031 x .248" (0.8x6.3mm) B Normally closed (standard) .031 x .248" (0.8x6.3mm) C Change-over (standard) .031 x .248" (0.8x6.3mm) D Normally open, .031 x .248" (0.8x6.3mm), spacing .197" (5mm) E Normally closed, .031 x .248" (0.8x6.3mm), spacing .197" (5mm) F Change-over, .031 x .248" (0.8x6.3mm), spacing .197" (5mm) G Normally open, .020 x .189" (0.5x4.8mm) H Normally closed, .020 x .189" (0.5x4.8mm) I Change-over, .020 x .189" (0.5x4.8mm) J Normally open, .031 x .189" (0.8x4.8mm) K Normally closed, .031 x .189" (0.8x4.8mm) L Change-over, .031 x .189" (0.8x4.8mm)	6 16(4)A 250 VAC 7 3(0.1)A 250 VAC	A Pin actuator B Hinge actuator C Roller actuator

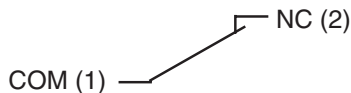
STANDARD MODELS

Quick-connect terminal		.031x.248" (0.8x6.3mm)		.031x.248" (0.8x6.3mm) pin spacing - .197"(5mm)		.020x.189" (0.5x4.8mm)		.031x.189" (0.8x4.8mm)	
		16(4)A	3(0.1)A	16(4)A	16(4)A	3(0.1)A	16(4)A	3(0.1)A	
Pin plunger	NO	MAA6A	MAA7A	MAD6A	MAG6A	MAG7A	MAJ6A	MAJ7A	
	NC	MAB6A	MAB7A	MAE6A	MAH6A	MAH7A	MAK6A	MAK7A	
	CO	MAC6A	MAC7A	MAF6A	MAI6A	MAI7A	MAL6A	MAL7A	
Hinge lever	NO	MAA6B	-	MAD6B	MAG6B	-	MAJ6B	-	
	NC	MAB6B	-	MAE6B	MAH6B	-	MAK6B	-	
	CO	MAC6B	-	MAF6B	MAI6B	-	MAL6B	-	
Roller lever	NO	MAA6C	-	MAD6C	MAG6C	-	MAJ6C	-	
	NC	MAB6C	-	MAE6C	MAH6C	-	MAK6C	-	
	CO	MAC6C	-	MAF6C	MAI6C	-	MAL6C	-	

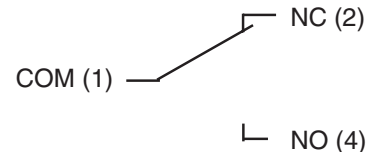
NO = NORMALLY OPEN:



NC = NORMALLY CLOSED:



CO = CHANGE-OVER:



SPECIFICATIONS SUBJECT TO CHANGE WITHOUT NOTICE

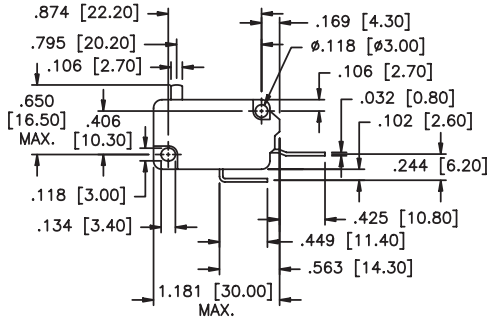
H

MA SERIES - MICRO-LIMIT SWITCHES

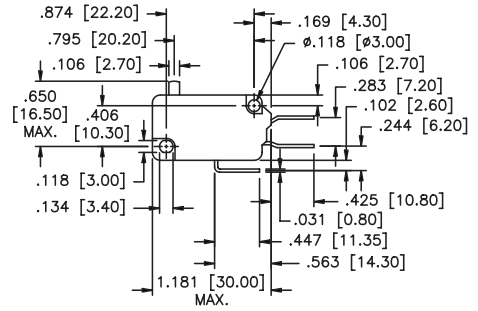
MECHANICAL OUTLINES

Models with quick-connect terminal .031x.248" (0.8x6.3mm)

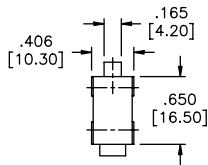
SPECIFICATIONS SUBJECT TO CHANGE WITHOUT NOTICE



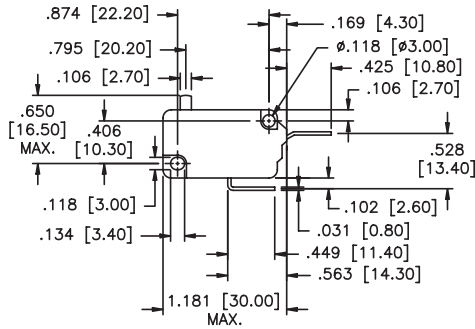
Normally open



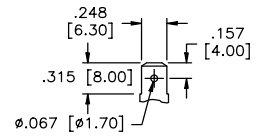
Change-over



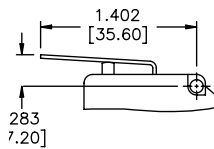
Side view



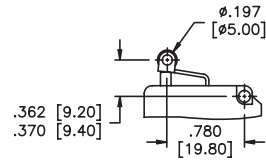
Normally closed



Quick-connect terminal



Hinge lever

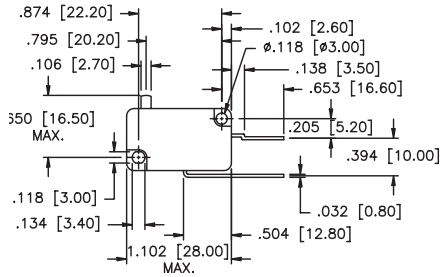


Roller lever

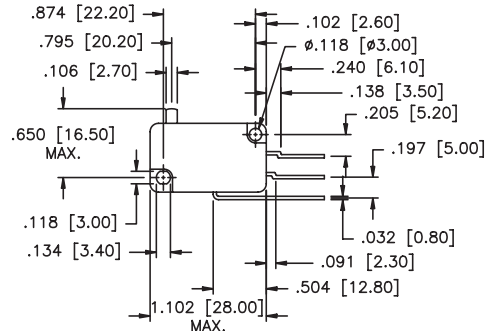
MA SERIES - MICRO-LIMIT SWITCHES

MECHANICAL OUTLINES

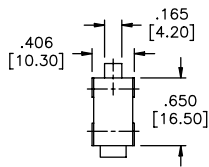
Models with quick-connect terminal .031x.248" (0.8x6.3mm) & pin spacing .197" (5mm)



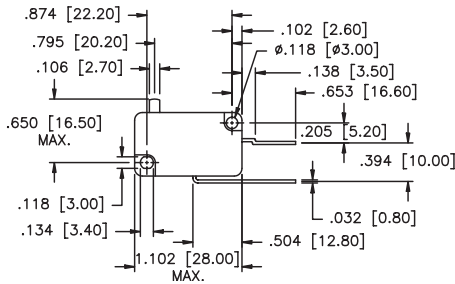
Normally open



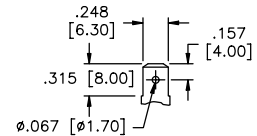
Change-over



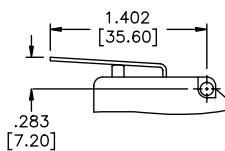
Side view



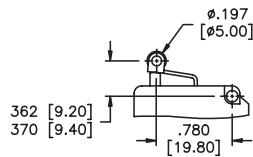
Normally closed



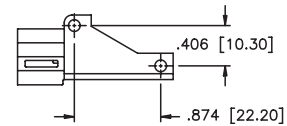
Quick-connect terminal



Hinge lever



Roller lever



Adaptor element

SPECIFICATIONS SUBJECT TO CHANGE WITHOUT NOTICE

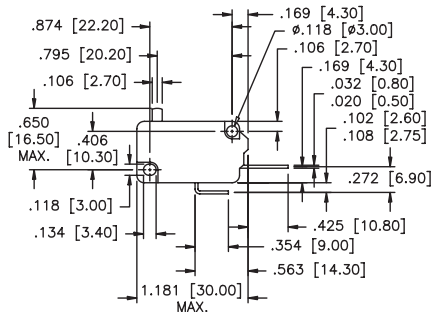
H

MA SERIES - MICRO-LIMIT SWITCHES

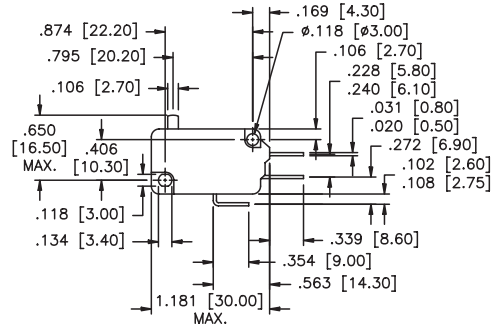
MECHANICAL OUTLINES

Models with quick-connect terminal .020 or .031x.248" (0.8 or 0.8x6.3mm)

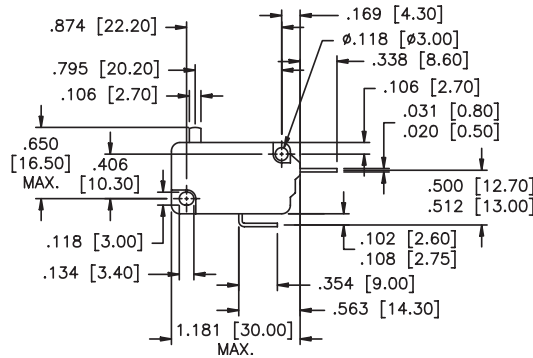
SPECIFICATIONS SUBJECT TO CHANGE WITHOUT NOTICE



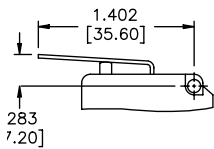
Normally open



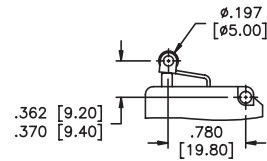
Change-over



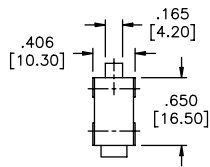
Normally closed



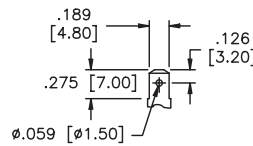
Hinge lever



Roller lever



Side view



Quick connect terminal