

Excellent Integrated System Limited

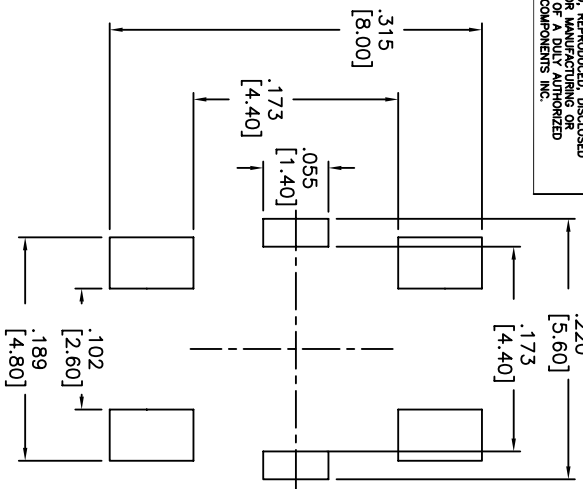
Stocking Distributor

Click to view price, real time Inventory, Delivery & Lifecycle Information:

[Apem Inc.](#)
[ATMG534VTR](#)

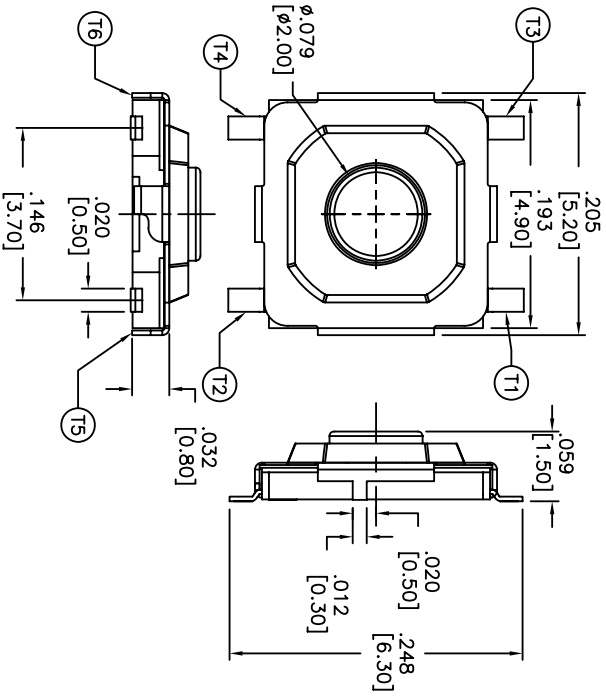
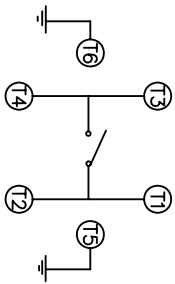
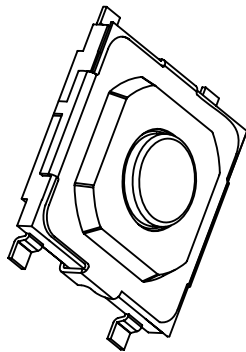
For any questions, you can email us directly:
sales@integrated-circuit.com

THIS DOCUMENT IS THE PROPERTY OF APEM COMPONENTS AND SHALL NOT BE COPIED, REPRODUCED, DISCLOSED OR USED AS THE BASIS FOR MANUFACTURING OR REPAIRING WITHOUT PERMISSION OF APEM COMPONENTS INC.



OPERATION FORCE:
 3=160gf
 4=260gf

ATMG534V*
 PACKAGE STYLE:
 T/R=TAPE AND REEL
 LEAD FREE



DESCRIPTION: MINIATURE MECHANICAL CONTACT SWITCH WITH SURFACE MOUNT TERMINALS AND GROUNDING TERMINALS.

SPECIFICATIONS:
 STROKE: .010 ^{+0.004} _{-0.004} [0.25 ^{+0.10} _{-0.20}]
 OPERATION TEMPERATURE RANGE: -25°C TO +70°C
 STORAGE TEMPERATURE RANGE: -30°C TO +80°C
 VIBRATION TEST: PASSES METHOD 201A
 MIL-STD-202F
 SHOCK TEST: 50G PER METHOD 213B MIL-STD202F.
 ELECTRICAL LIFE: 1,000,000 CYCLES MIN FOR 160gf, 200,000 CYCLES MIN FOR 260gf.

RATING: 50mA, 12VDC.
 CONTACT RESISTANCE: 100mΩ MAX.
 INSULATION RESISTANCE: 100MΩ MIN. AT 500VDC.
 DIELECTRIC STRENGTH: 250VAC/1 MINUTE.
 CONTACT ARRANGEMENT: 1 POLE 1 THROW.
 MATERIALS:
 COVER: NICKEL SILVER.
 BASE: HIGH-TEMP. THERMOPLASTIC.
 COLOR: BLACK.
 STEM: BRASS WITH NICKEL PLATING
 CONTACT DISC: STAINLESS STEEL.
 TERMINAL: BRASS WITH SILVER CLADDING.
 TAPE: TEFLO
 SOLDERING:
 HAND SOLDERING: 30 WATT IRON AT 350°C FOR 5 SEC.
 VAPOR & REFLOW: 255°C FOR 5 SEC. MAX.
 NON-WASHABLE
 LEAD FREE PROCESS COMPATIBLE
 ROHS COMPLIANT

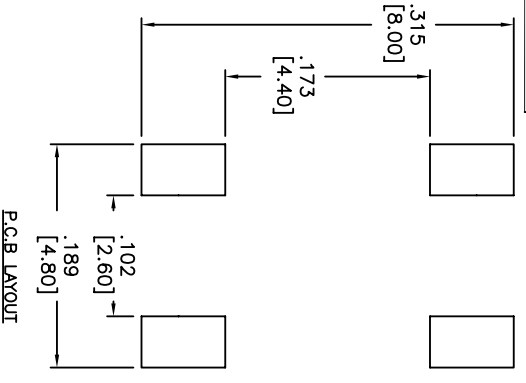
DATE	S/M	REVISION RECORD	DWN.	CK.
11/05	B	ECO# 495		

Q.A. INSPECT		DATE		DRAWING NO.	
DESIGNS: CPMAL		08/15/05		ATMG534V*	
DIMENSION		SHEET 1 OF 1		SCALE 10:1	
TOLERANCES (mm)		SIZE B		THIRD ANGLE PROJECTION	
.xxx = ±.02 [0.05]				PUD	
.xxx = ±.008 [0.20]				PUD	
.xxx = ±.008 [0.20]				PUD	
ANGLE = ±0.5°				PUD	
DO NOT SCALE DRAWING				REV B	

APEM
 63 NINE RD. 01835
 TEL: 978-372-1602
 FAX: 978-372-5534
 WWW.APEM-INC.COM

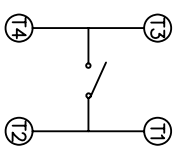
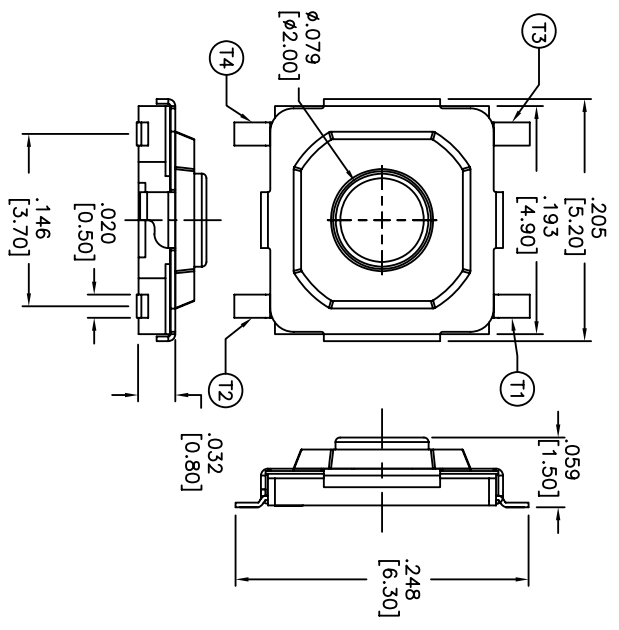
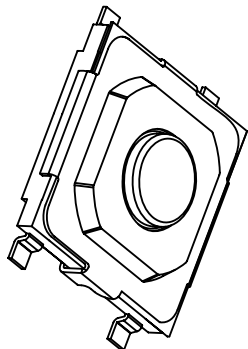
TITLE
 MECHANICAL CONTACT SWITCH

THIS DOCUMENT IS THE PROPERTY OF APEM COMPONENTS AND SHALL NOT BE COPIED, REPRODUCED, DISCLOSED OR USED AS THE BASIS FOR MANUFACTURING OR SALE WITHOUT PERMISSION OF APEM. THIS PERMISSION IS REVOCABLE AND NOT BINDING ON THE PURCHASER. REPRESENTATIVE OF APEM COMPONENTS INC.



OPERATION FORCE:
 2=100gf
 3=160gf
 4=260gf

ATMG534V* PACKAGE STYLE:
 T/R=TAPE AND REEL
 LEAD FREE



DATE	SYM	REVISION RECORD	DMN.	CK.

DESCRIPTION: MINIATURE MECHANICAL CONTACT SWITCH SURFACE MOUNT TERMINALS.

SPECIFICATIONS:

STROKE: .010 \pm .004 [0.25 \pm 0.10]

OPERATION TEMPERATURE RANGE: -25°C TO +70°C

STORAGE TEMPERATURE RANGE: -30°C TO +80°C

VIBRATION TEST: PASSES METHOD 201A MIL-STD-202F.

SHOCK TEST: 50G PER METHOD 213B MIL-STD-202F.

ELECTRICAL LIFE: 1,000,000 CYCLES MIN FOR 100gf, 16 200,000 CYCLES MIN FOR 260gf.

RATING: 50mA, 12VDC.

CONTACT RESISTANCE: 100mΩ MAX.

INSULATION RESISTANCE: 100MΩ MIN. AT 500VDC.

DIELECTRIC STRENGTH: 250VAC/1 MINUTE.

CONTACT ARRANGEMENT: 1POLE 1 THROW.

MATERIALS:

COVER: NICKEL SILVER.

BASE: HIGH-TEMP. THERMOPLASTIC.

COLOR, BLACK.

STEM: BRASS WITH NICKEL PLATING.

CONTACT DISC: STAINLESS STEEL WITH SILVER PLATING.

TERMINAL: BRASS WITH SILVER CLADDING.

TAPE: TEFLON

SOLDERING:

HAND SOLDERING: 30 WATT IRON AT 350°C FOR 5 SEC

VAPOR & REFLOW: 255°C FOR 5 SEC. MAX.

NON-WASHABLE

LEAD FREE PROCESS COMPATIBLE

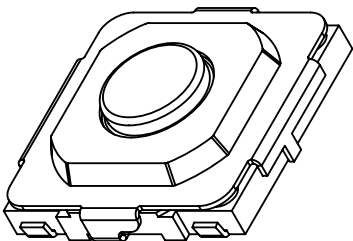
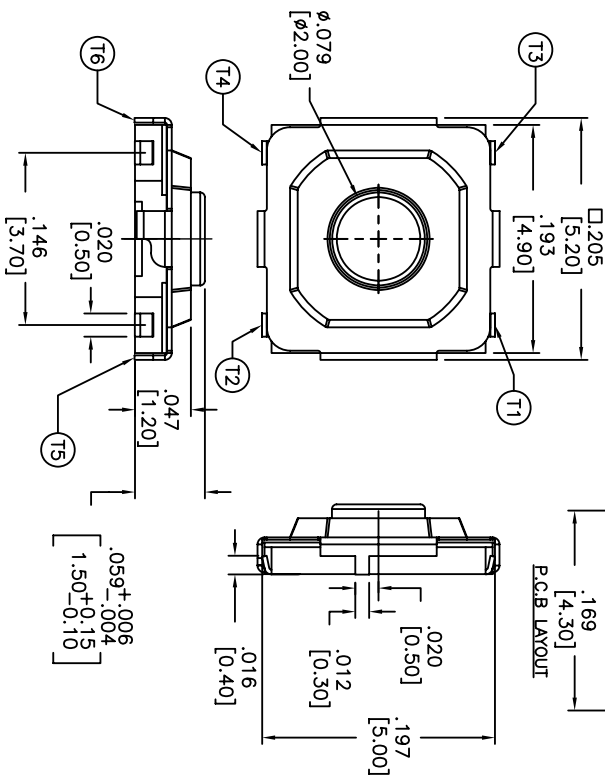
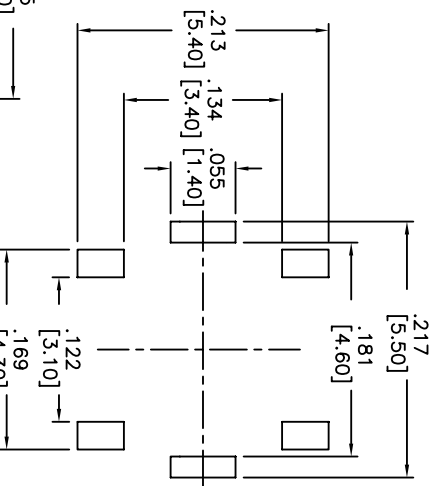
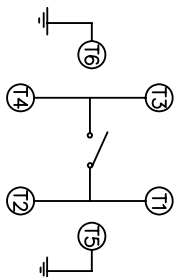
ROHS COMPLIANT

Q.A. INSPECT	DATE	DRAWING NO.	REV										
	4/26/06	ATMG534V*	A										
DESIGNS: CPMAL	<table border="1"> <tr> <td>INCH</td> <td>SHEET</td> <td>SIZE</td> <td>SCALE</td> <td>THIRD ANGLE PROJECTION</td> </tr> <tr> <td>1</td> <td>OF 1</td> <td>B</td> <td>10:1</td> <td></td> </tr> </table>			INCH	SHEET	SIZE	SCALE	THIRD ANGLE PROJECTION	1	OF 1	B	10:1	
INCH	SHEET	SIZE	SCALE	THIRD ANGLE PROJECTION									
1	OF 1	B	10:1										
TOLERANCES (UNLESS OTHERWISE SPECIFIED)	<table border="1"> <tr> <td>.XXX = ±.02 [0.50]</td> <td>PER</td> <td>CJD</td> </tr> <tr> <td>.XXX = ±.008 [0.20]</td> <td>CHK</td> <td>PJD</td> </tr> <tr> <td>.XXX = ±.0008 [0.02]</td> <td>BR</td> <td> </td> </tr> </table>			.XXX = ±.02 [0.50]	PER	CJD	.XXX = ±.008 [0.20]	CHK	PJD	.XXX = ±.0008 [0.02]	BR		
.XXX = ±.02 [0.50]	PER	CJD											
.XXX = ±.008 [0.20]	CHK	PJD											
.XXX = ±.0008 [0.02]	BR												
ANGLE = 40.5°	<p>MECHANICAL CONTACT SWITCH</p>												

1 2 3 4 5 6 7 8

THIS DOCUMENT IS THE PROPERTY OF APEM COMPONENTS AND SHALL NOT BE COPIED, REPRODUCED, DISCLOSED OR USED AS THE BASIS FOR MANUFACTURING OR SALE WITHOUT PERMISSION OF APEM. PERMISSION IS REPRESENTATIVE OF APEM COMPONENTS INC.

CIRCUIT DIAGRAM



OPERATION FORCE: ATMG534VTR
 3=160gf
 4=260gf

PACKAGE STYLE:
 T/R=TAPE AND REEL
 LEAD FREE

DATE	SYM	REVISION RECORD	DMN.	CK

DESCRIPTION: MINIATURE MECHANICAL CONTACT SWITCH WITH "S" TYPE SMT AND GROUNDING TERMINALS.

SPECIFICATIONS:

- OPERATION TEMPERATURE RANGE: -25°C TO +70°C
- STORAGE TEMPERATURE RANGE: -30°C TO +80°C
- VIBRATION TEST: PASSES METHOD 201A
- MIL-STD-202F.
- SHOCK TEST: 50G PER METHOD 213B MIL-STD202F.
- ELECTRICAL LIFE: 1,000,000 CYCLES MIN FOR 160gf, 200,000 CYCLES MIN FOR 260gf.
- RATING: 50mA, 12VDC.
- CONTACT RESISTANCE: 100mΩ MAX.
- INSULATION RESISTANCE: 100MΩ MIN. AT 500VDC.
- DIELECTRIC STRENGTH: 250VAC/1 MINUTE.
- STROKE: 0.25 +0.10mm
- CONTACT ARRANGEMENT: 1POLE 1 THROW.

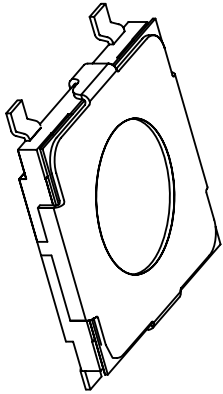
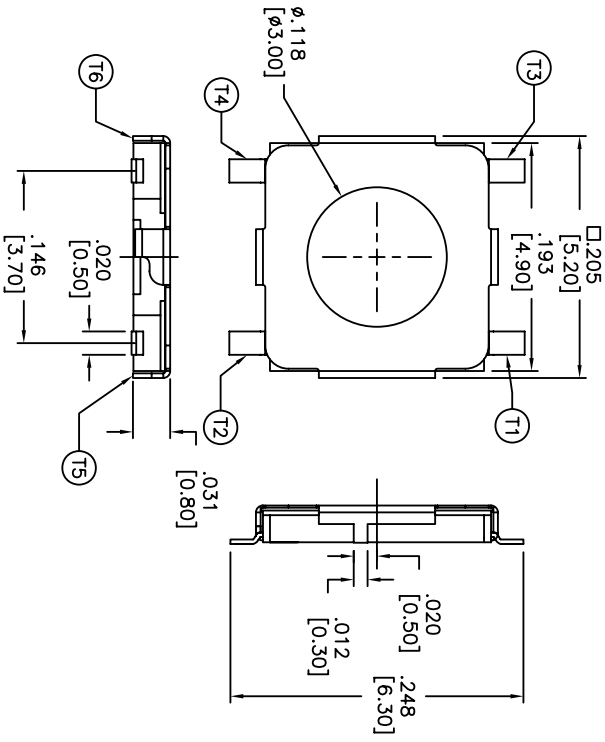
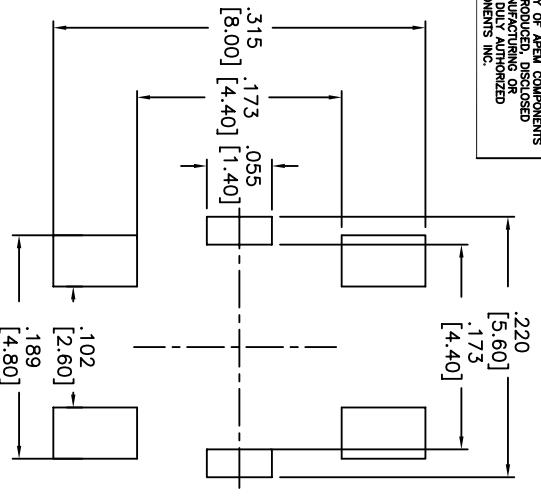
MATERIALS:

- COVER: NICKEL SILVER.
- BASE: HIGH-TEMP. THERMOPLASTIC.
- COLOR: BLACK.
- STEM: BRASS WITH NICKEL PLATING
- CONTACT DISC: STAINLESS STEEL.
- TERMINAL: BRASS WITH SILVER CLADDING.
- TAPE: TEFLON

- SOLDERING: HAND SOLDERING: 30 WATT IRON AT 350°C FOR 5 SEC.
- IR REFLOW: 225°C MAX.
- LEAD FREE PROCESS COMPATIBLE
- ROHS COMPLIANT

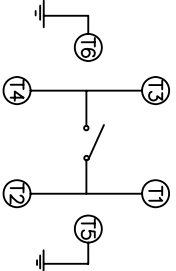
Q.A. INSECT	DESIGNATES CRITICAL DIMENSION	ISO	DATE	DRAWING NO.
APPEL	APPEL	APPEL	8/11/05	ATMG534V*
TOLERANCES (cover as noted)	1st ANG. 1st PROJ.	1st ANG. 1st PROJ.		
XXX = ±0.02 [0.51]	XXX = ±0.02 [0.51]	XXX = ±0.02 [0.51]		
XXXX = ±0.01 [0.25]	XXXX = ±0.01 [0.25]	XXXX = ±0.01 [0.25]		
XXXXX = ±0.008 [0.20]	XXXXX = ±0.008 [0.20]	XXXXX = ±0.008 [0.20]		
ANGLE = 40.5°				

THIS DOCUMENT IS THE PROPERTY OF APEM COMPONENTS AND SHALL NOT BE COPIED, REPRODUCED, DISCLOSED OR USED AS THE BASIS FOR MANUFACTURING OR SALE WITHOUT PERMISSION OF APEM. ALL RIGHTS ARE RESERVED. REPRESENTATIVE OF APEM COMPONENTS INC.



OPERATION FORCE: _____
 2=100gf
 3=160gf
 4=260gf

ATMG524V*
 PACKAGE STYLE:
 1/R=TAPE AND REEL
 LEAD FREE



CIRCUIT DIAGRAM

DESCRIPTION: MINIATURE MECHANICAL CONTACT SWITCH WITH SMT, AND GROUNDING TERMINALS.

SPECIFICATIONS:
 OPERATION TEMPERATURE RANGE: -25°C TO +70°C
 STORAGE TEMPERATURE RANGE: -30°C TO +80°C
 VIBRATION TEST: PASSES METHOD 201A MIL-STD-202F.
 STROKE: 0.10 ±.004 [0.25 ±.010]
 SHOCK TEST: 50G PER METHOD 213B MIL-STD202F.
 ELECTRICAL LIFE: 1,000,000 CYCLES MIN FOR 100gf AND 160gf.
 200,000 CYCLES MIN FOR 260gf.

RATING: 50mA, 12VDC.
 CONTACT RESISTANCE: 100mΩ MAX.
 INSULATION RESISTANCE: 100MΩ MIN. AT 500VDC.
 DIELECTRIC STRENGTH: 250VAC/1 MINUTE.
 CONTACT ARRANGEMENT: 1POLE 1 THROW.

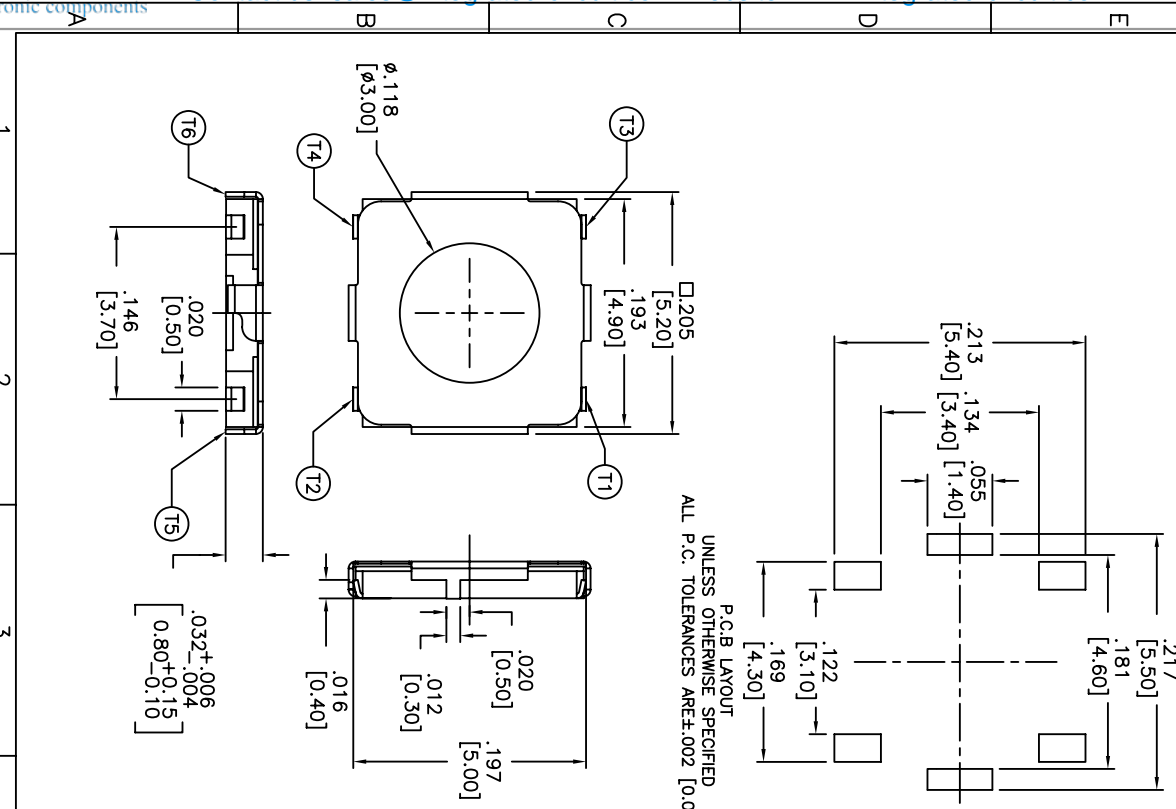
MATERIALS:
 COVER: NICKEL SILVER.
 BASE: HIGH-TEMP. THERMOPLASTIC.
 COLOR, BLACK.
 STEM: BRASS WITH NICKEL PLATING
 CONTACT DISC: STAINLESS STEEL WITH SILVER CLADDING.
 TERMINAL: BRASS WITH SILVER PLATING.
 TAPE: TEFLON

SOLDERING:
 HAND SOLDERING: 30 WATT IRON AT 350°C FOR 5 SEC.
 IR REFLOW: 260°C MAX
 LEAD FREE PROCESS COMPATIBLE
 ROHS COMPLIANT

DATE	SYM	REVISION RECORD	DRAWN	CHK

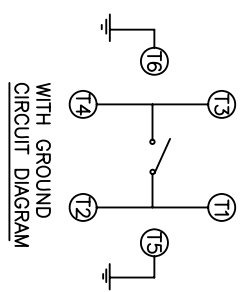
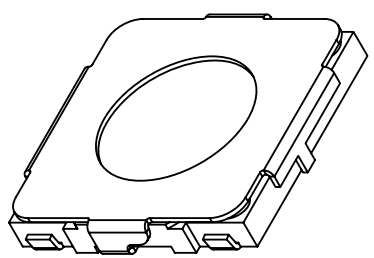
Q.A. INSPECT	DESIGNER'S SYMBOL	DATE	DRAWING NO.
		8/15/05	ATMG524V*
TOLERANCES (unless as noted) .XX=±.02 [0.05] .XXX=±.008 [0.20] .XXXX=±.0008 [0.02] ANGLE = 40.5°	APEM 63 Nankai Rd. 01835 Tel: 877-872-1602 Fax: 877-872-5534 www.apem.com	SHEET 1 OF 1	SCALE 10:1
		TITLE MECHANICAL CONTACT SWITCH	THIRD ANGLE PROJECTION
DO NOT SCALE DRAWING			REV A

THIS DOCUMENT IS THE PROPERTY OF APEM COMPONENTS AND SHALL NOT BE COPIED, REPRODUCED, DISCLOSED OR USED AS THE BASIS FOR MANUFACTURING OR REPAIRING WITHOUT PERMISSION OF APEM COMPONENTS INC.



OPERATION FORCE:
 2=100gf
 3=160gf
 4=260gf

ATMG52*V*
 PACKAGE STYLE:
 T/R=TAPE AND REEL
 LEAD FREE



DESCRIPTION: MINIATURE MECHANICAL CONTACT SWITCH WITH J TYPE SMT AND GROUNDING TERMINALS.

SPECIFICATIONS:
 OPERATION TEMPERATURE RANGE: -25°C TO $+70^{\circ}\text{C}$
 STORAGE TEMPERATURE RANGE: -30°C TO $+80^{\circ}\text{C}$
 VIBRATION TEST: PASSES METHOD 201A MIL-STD-202F.
 SHOCK TEST: 50G PER METHOD 213B MIL-STD202F.
 ELECTRICAL LIFE: 1,000,000 CYCLES MIN FOR 100gf.
 200,000 CYCLES MIN FOR 260gf.
 RATING: 50mA, 12VDC.
 CONTACT RESISTANCE: 100m Ω MAX.
 INSULATION RESISTANCE: 100M Ω MIN. AT 500VDC.
 DIELECTRIC STRENGTH: 250VAC/1 MINUTE.
 STROKE: 0.25 ± 0.06 mm
 CONTACT ARRANGEMENT: 1POLE 1 THROW.

MATERIALS:
 COVER: NICKEL SILVER.
 BASE: HIGH-TEMP. THERMOPLASTIC.
 COLOR: BLACK.
 STEM: BRASS WITH NICKEL PLATING
 CONTACT DISC: STAINLESS STEEL WITH SILVER CLADDING.
 TERMINAL: BRASS WITH SILVER PLATING.
 TAPE: TEFLON

SOLDERING:
 HAND SOLDERING: 30 WATT IRON AT 350°C FOR 5 SEC.
 IR REFLOW: 260°C MAX.
 LEAD FREE PROCESS COMPATIBLE
 ROHS COMPLIANT

DATE	S/M	REVISION RECORD	D/W/L	CK

Q.A. INSPECT	DESIGNER'S SYMBOL	DATE	DRAWING NO.
		8/11/06	ATMG52*V*
TOLERANCES (mm)	TITLE	DRAWING NO.	
.XX = ± 0.02 [0.05]	MECHANICAL	ATMG52*V*	
.XXX = ± 0.05 [0.20]	CONTACT SWITCH		
.XXXX = ± 0.008 [0.20]			
ANGLE = $\pm 0.5^{\circ}$			
DO NOT SCALE DRAWING			