

## Excellent Integrated System Limited

Stocking Distributor

Click to view price, real time Inventory, Delivery & Lifecycle Information:

[E-Switch](#)  
[1004P1T6B11M1QE](#)

For any questions, you can email us directly:

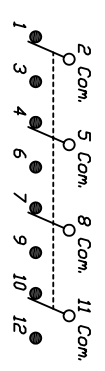
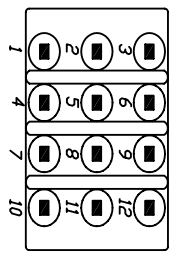
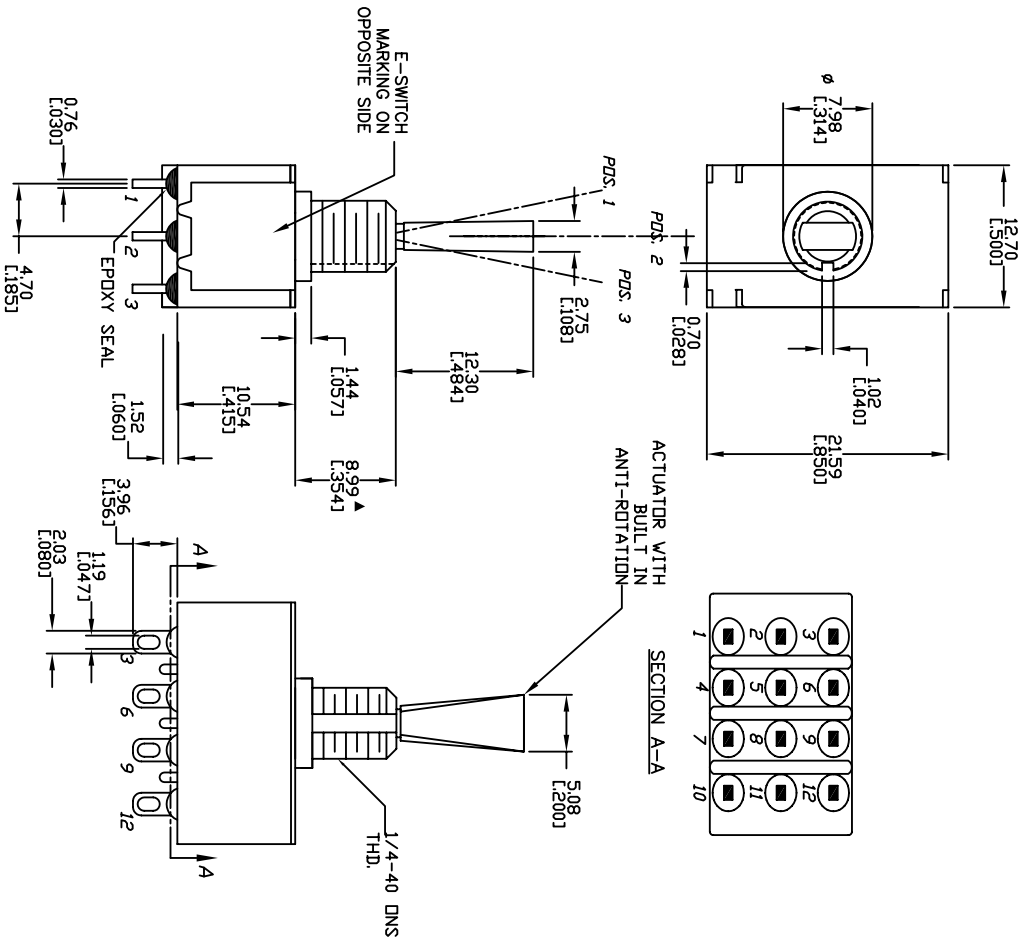
[sales@integrated-circuit.com](mailto:sales@integrated-circuit.com)

REV.	ECN No.	DESCRIPTION	DATE	CHKD
B	16565	11.43 TO 12.30 CORRECTION	10/23/06	TN
A	12901	RELEASED FOR PRODUCTION	12901	RC

SCALE	TITLE	DATE	DR	DWG	REV
NONE	100 4P1 T6 B11 M1 Q E	3/12/03	RC	T141009	B

# E-SWITCH®

THE INFORMATION CONTAINED IN THIS DOCUMENT IS PROPRIETARY TO E-SWITCH AND IS NOT TO BE COPIED OR TRANSFERRED



CONTACT CONFIGURATION

SWITCH FUNCTION	PDS. 1	PDS. 2	PDS. 3
2-3, 5-6	DN	DN	DN
8-9, 11-12	DPEN	DPEN	DPEN

- NOTES:
1. ALL DIMENSIONS IN MM [INCH]
  2. GENERAL TOLERANCE: X.X=±0.4
  3. TERM. NOS. FOR REF. ONLY
  4. RATING: 5A@ 120VAC OR 28VDC  
2A@ 250VAC
  5. ELECTRICAL LIFE: 40,000 CYCLES AT FULL LOAD
  6. INSULATION RESISTANCE: 1000M OHMS MIN.
  7. DIELECTRIC STRENGTH: 1000V RMS
  8. OPERATING TEMP: -50C TO + 85C