

Excellent Integrated System Limited

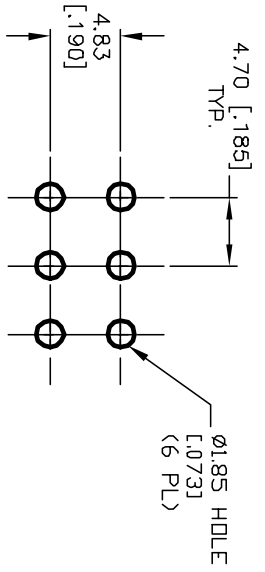
Stocking Distributor

Click to view price, real time Inventory, Delivery & Lifecycle Information:

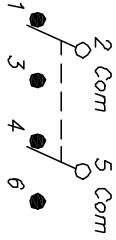
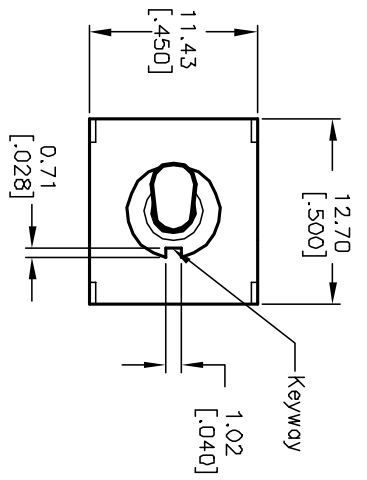
[E-Switch](#)
[100DP4T1B4M2QE](#)

For any questions, you can email us directly:

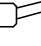
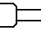
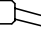
sales@integrated-circuit.com



RECOMMENDED P.C.B. LAYOUT
SCALE: 2:1



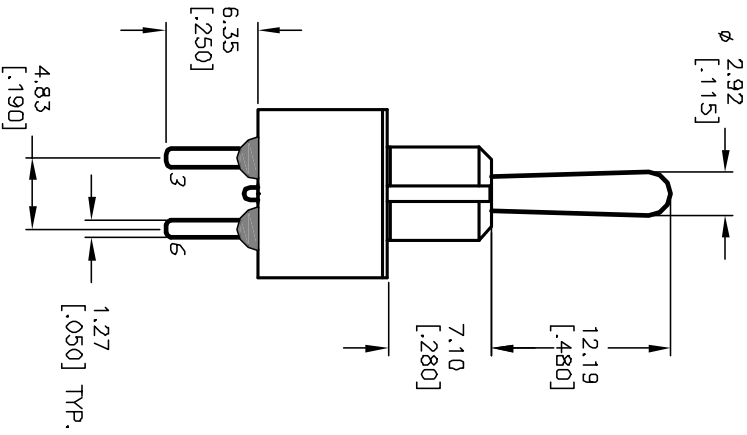
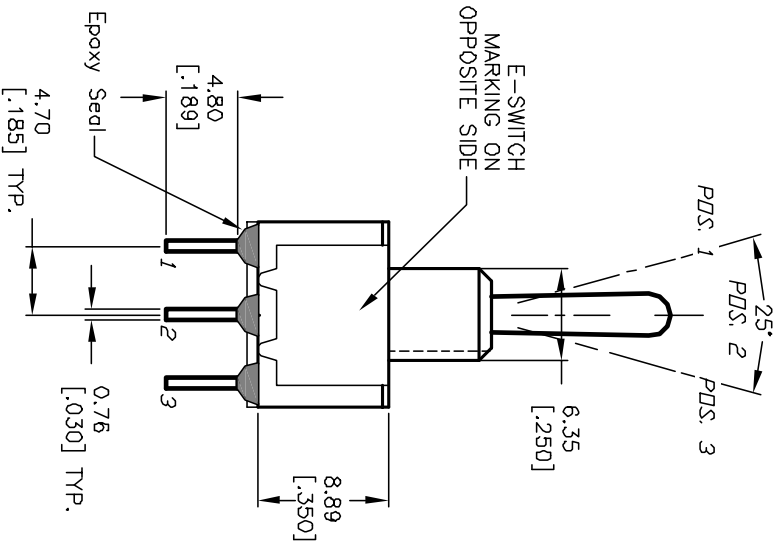
CIRCUIT: DPDT

SWITCH FUNCTION		
PDS: 1	PDS: 2	PDS: 3
		
<DN>	DEF	<DN>
2-3,5-6	DPEN	2-1,5-4

NOTES:

1. ALL DIMENSIONS IN MM [INCH]
2. GENERAL TOLERANCE: X.X=±0.4 X.XX=±0.25
3. TERM. NDS. FOR REF. ONLY
4. RATING: 5A @120VAC OR 28VDC 2A @250VAC
5. MATERIALS: FIXED TERM. & MOVING CONTACT:
Copper Alloy w/Silver plate.
6. ELECTRICAL LIFE: 50,000 make-and-break cycles at full load.
7. INSULATION RESISTANCE: 1,000M ohm min.
8. DIELECTRIC STRENGTH: 1000V RMS @sea level
9. OPERATING TEMP.: -30°C to 85°C

(>)=Momentary



E-SWITCH®

100 DP-4 T1 B4 M2 Q E

REV.	ECN No.	DESCRIPTION	DATE	CHKD
A	I2399	RELEASED FOR PRODUCTION	9/3/02	CJB

TITLE	SCALE	DATE	DR	DWG	REV
100 DP-4 T1 B4 M2 Q E	2:1	7/20/01	CJB	T124015	A

THE INFORMATION CONTAINED IN THIS DOCUMENT IS PROPRIETARY TO E-SWITCH AND IS NOT TO BE COPIED OR TRANSMITTED