

## Excellent Integrated System Limited

Stocking Distributor

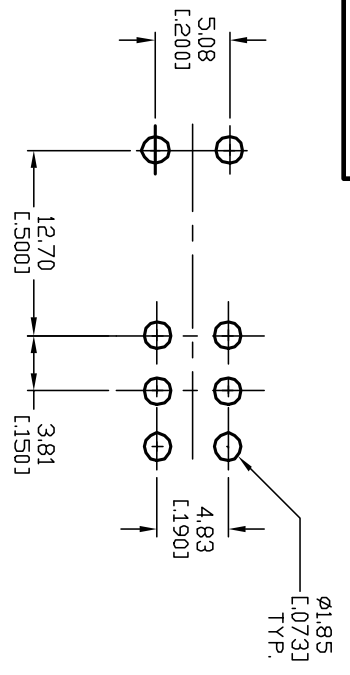
Click to view price, real time Inventory, Delivery & Lifecycle Information:

[E-Switch](#)  
[100DP6T6B12M7QE](#)

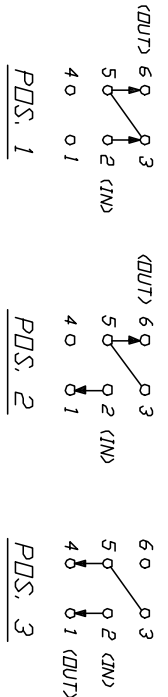
For any questions, you can email us directly:

[sales@integrated-circuit.com](mailto:sales@integrated-circuit.com)

SHEET OF



RECOMMENDED P.C.B. LAYOUT



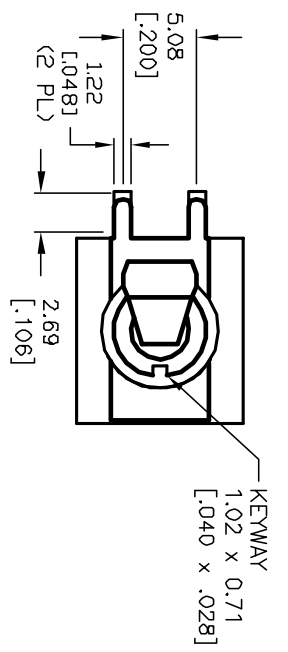
CIRCUIT: DPDT 3-WAY

NOTE: JUMPER PIN 3 TO PIN 5

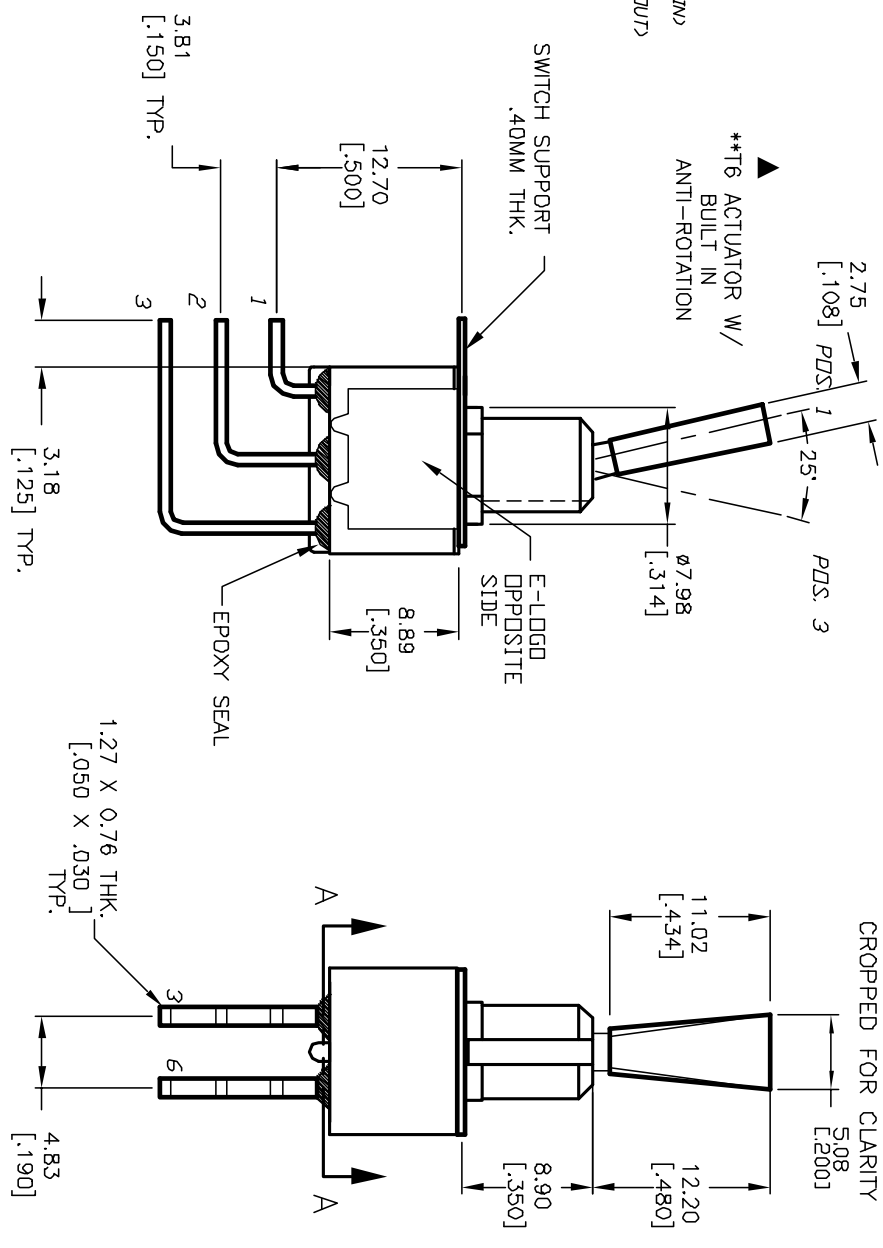
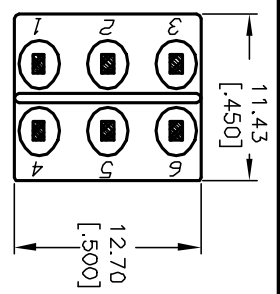
SWITCH FUNCTION			
POS. 1	POS. 2	POS. 3	
2-3-5-6	2-1-5-6	2-1-5-4	

NOTES:

1. ALL DIMENSIONS IN MM [INCH]
2. GENERAL TOLERANCE: X.X=±0.4  
X.XX=±0.25
3. TERMINAL NUMBERS FOR REF ONLY
4. RATING: 5A @120VAC OR 28VDC:  
2A @250VAC
5. FIXED TERM. & MOVING CONTACT:  
COPPER ALLOY w/SILVER CONTACT.
6. ELECTRIC LIFE: 50,000 make-and-break cycles  
at full load.
7. INSULATION RESISTANCE: 1,000 Mega-ohm min.
8. DIELECTRIC STRENGTH: 1,000 V RMS @sea level.
9. OPERATING TEMP: -30°C to +85°C



SECTION A-A  
CROPPED FOR CLARITY



REV.	ECN NO.	DESCRIPTION	DATE	CHKD
A	12088	RELEASED FOR PRODUCTION	4/25/02	CB

TITLE	SCALE	DATE	DR	DWG	REV
100 DP-6 T6 B12 M7 Q E	2:1	4/25/02	CB	T126021	A



THE INFORMATION CONTAINED IN THIS DOCUMENT IS PROPRIETARY TO E-SWITCH AND IS NOT TO BE COPIED OR TRANSMITTED