

## Excellent Integrated System Limited

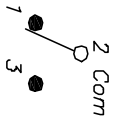
Stocking Distributor

Click to view price, real time Inventory, Delivery & Lifecycle Information:

[E-Switch](#)  
[100SP2T1B2M3QE](#)

For any questions, you can email us directly:

[sales@integrated-circuit.com](mailto:sales@integrated-circuit.com)

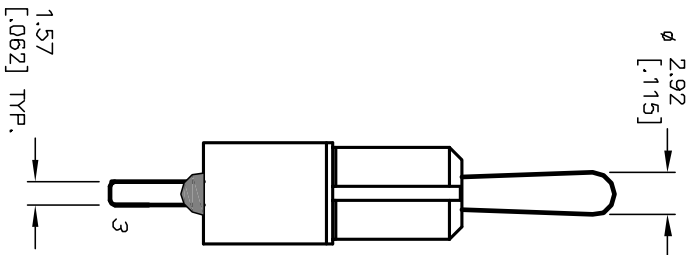
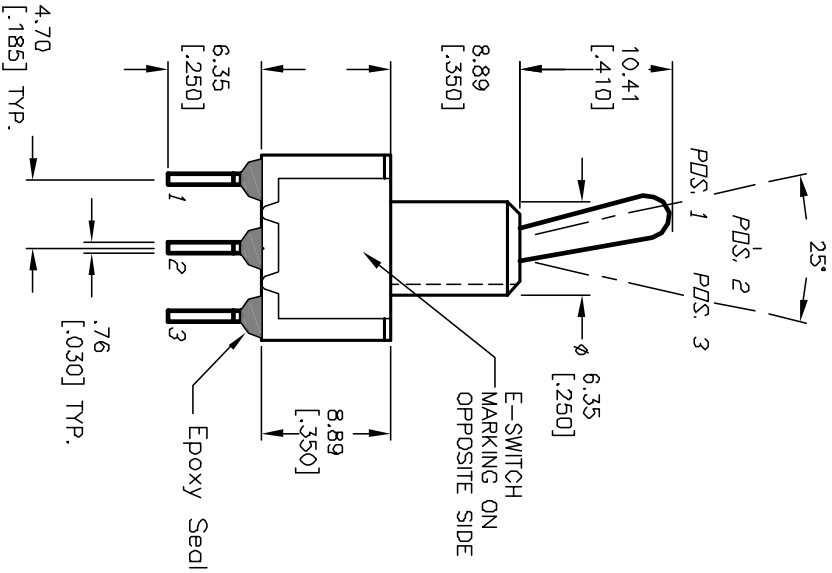
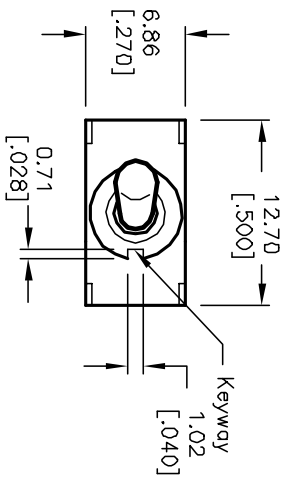


CIRCUIT: SPDT

SWITCH FUNCTION		
POS. 1	POS. 2	POS. 3
DN	NONE	<DN>
2-3	OPEN	2-1

( ) =Momentary

- NOTES:
1. ALL DIMENSIONS IN MM [INCH]
  2. GENERAL TOLERANCE: X.X=±0.4  
X.XX=±0.25
  3. TERM. NDS. FOR REF. ONLY
  4. RATING: 5A @120VAC or 28VDC;  
2A @250VAC
  5. FIXED TERMINAL/MOVING CONTACT:  
Copper Alloy W/Silver Plate.
  6. ELECTRICAL LIFE: 50,000 make-and-break  
cycles at full load.
  7. INSULATION RESISTANCE: 1,000M ohm min.
  8. DIELECTRIC STRENGTH: 1000V RMS @sea level
  9. OPERATING TEMP.: -30°C to +85°C



**E-SWITCH®**

TITLE 100 SP-2 T1 B2 M3 Q E

SCALE 2:1

DATE 11/13/02

DR CJB

DWG T112054

REV A

REV. 12560 ECN No. 11/13/02 DATE 11/13/02 DATE CJB CHKD

REVISION AND REDRAWN DESCRIPTION

THE INFORMATION CONTAINED IN THIS DOCUMENT IS PROPRIETARY TO E-SWITCH AND IS NOT TO BE COPIED OR TRANSMITTED