

## Excellent Integrated System Limited

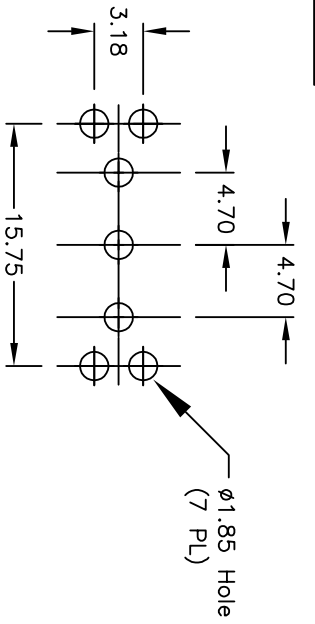
Stocking Distributor

Click to view price, real time Inventory, Delivery & Lifecycle Information:

[E-Switch](#)  
[100SP5T1B2VS2QE](#)

For any questions, you can email us directly:

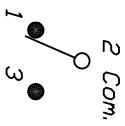
[sales@integrated-circuit.com](mailto:sales@integrated-circuit.com)



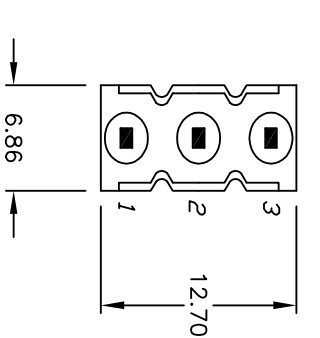
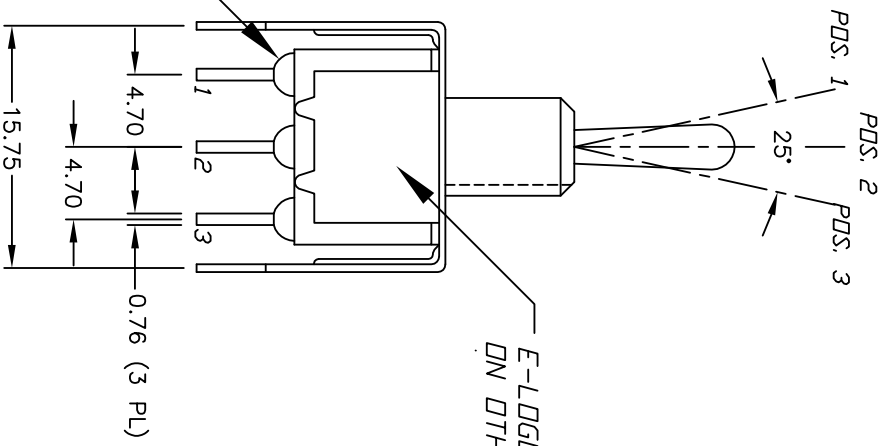
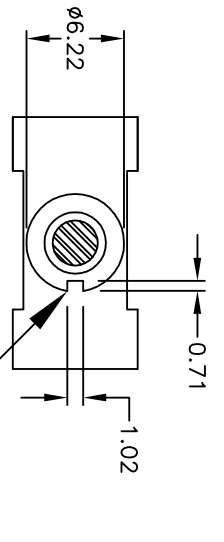
RECOMMENDED P.C.B. LAYOUT

SWITCH FUNCTION		
POS. 1	POS. 2	POS. 3
DN	OFF	<DN>
2-3	OPEN	2-1

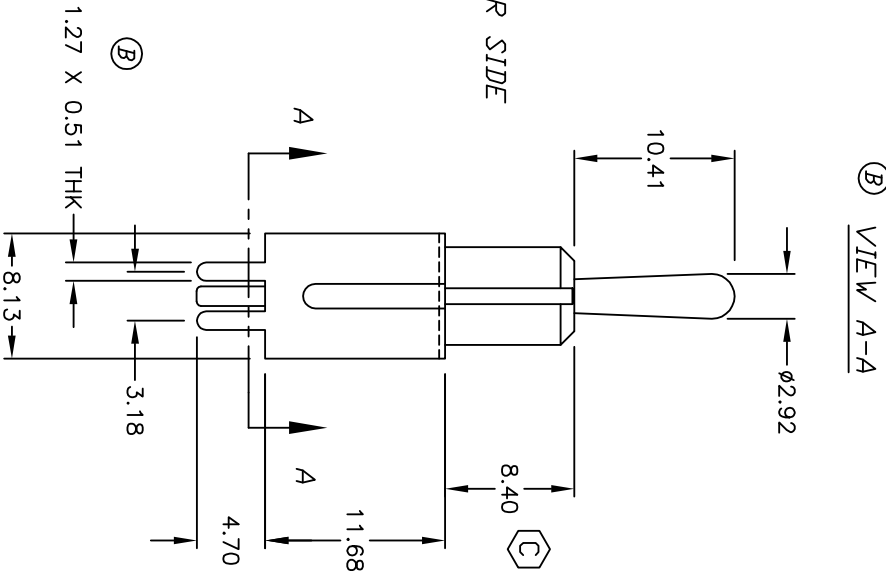
( ) = Momentary



CIRCUIT: SPDT



VIEW A-A



NOTES:

1. ALL DIMENSIONS IN MM
2. GENERAL TOLERANCE: X.X=±0.4 X.XX=±0.25
3. TERM. NOS. FOR REF. ONLY
4. RATING: 5A @120VAC OR 28VDC  
2A @250VAC w/Resistive loads
5. FIXED TERM. & MOVING CONTACT:  
Copper alloy w/SILVER plate
6. ELECTRICAL LIFE: 50,000 mcke-and-break cycles at full load.
7. INSULATION RESISTANCE: 1000M ohm min.
8. DIELECTRIC STRENGTH: 1000V RMS min. @sea level.
9. OPERATING TEMP.: -30°C to +85°C
10. 2002/95/EC (ROHS) COMPLIANT

REV.	ECN No.	DESCRIPTION	DATE	CHKD
C	18762	DIM FOR BUSHING HEIGHT UPDATED	1/11/10	BLR
B	12030	REVISED & REDRAWN	4/2/02	CJB
A	10724	RELEASED FOR PRODUCTION	7/3/03	GLG

TITLE		DATE		DR	DWG	REV
100 SP-5 T1 B2 VS2 Q E		1/11/10		BLR	T114999	C
SCALE	E-SWITCH®		LAMB INDUSTRIES		THE INFORMATION CONTAINED IN THIS DOCUMENT IS PROPRIETARY TO E-SWITCH AND IS NOT TO BE COPIED OR TRANSMITTED	
2:1						