

Excellent Integrated System Limited

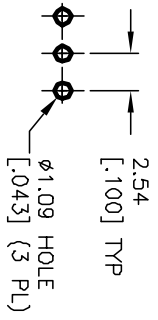
Stocking Distributor

Click to view price, real time Inventory, Delivery & Lifecycle Information:

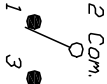
[E-Switch](#)
[200AWMSP4T1A1M2QE](#)

For any questions, you can email us directly:

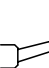


sales@integrated-circuit.com



RECOMMENDED PCB LAYOUT



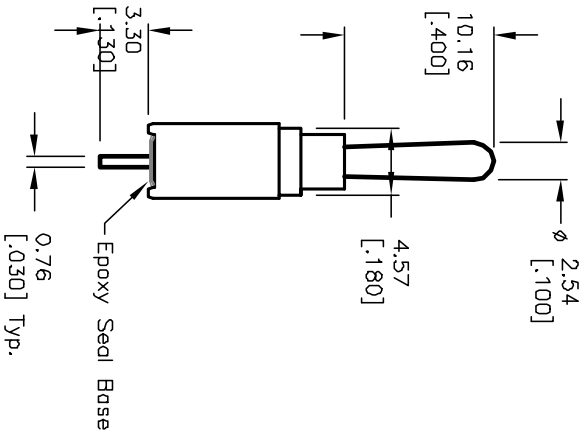
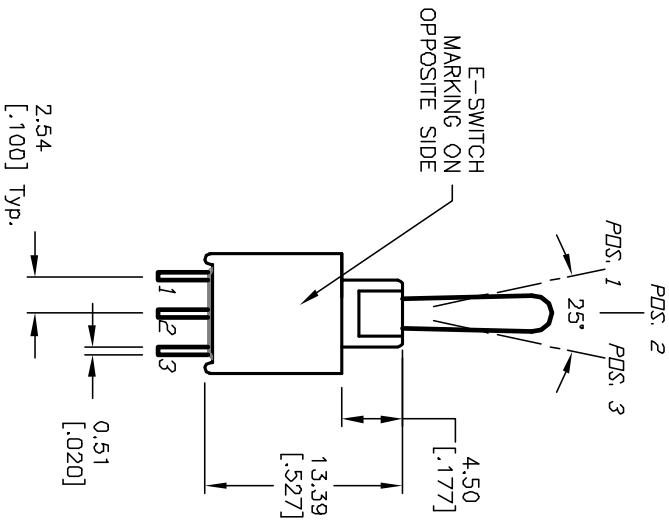
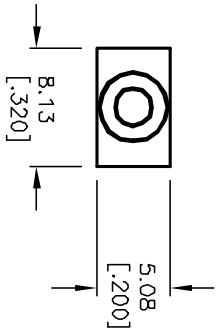
CIRCUIT: SPDT
 CONTACT CONFIGURATION

SWITCH FUNCTION		
POS. 1	POS. 2	POS. 3
		
<DN>	OFF	<DN>
2-3	OPEN	2-1

NOTES:

1. ALL DIMENSIONS IN MM [INCH]
2. GENERAL TOLERANCE: X,X=±0.4
X,XX=±0.25
3. TERMINAL NUMBERS FOR REF ONLY
4. RATING: 3A @120V AC or 2BVDC;
1A @250VAC.
5. FIXED TERM. & MOVING CONTACT:
Copper ALLOY W/Silver plate.
6. ELECTRIC LIFE: 50,000 make-and-break cycles
at full load.
7. INSULATION RESISTANCE: 1,000 Mega-ohm min.
8. DIELECTRIC STRENGTH: 1,000 V RMS @sea level.
9. OPERATING TEMP.: -30°C to +85°C

(>)=Momentary



E-SWITCH®

REV.	ECN No.	DESCRIPTION	DATE	CHKD
B	12200	REVISED FUNCTION CHART	5/31/02	CB
A	10762	REVISED AND REDRAWN	7/14/00	MM

TITLE	SCALE	DATE	DR	DWG	REV
200A WMSp-4 T1 A1 M2 Q E	2:1	7/14/00	MM	T201380	B

THE INFORMATION CONTAINED IN THIS DOCUMENT IS PROPRIETARY TO E-SWITCH AND IS NOT TO BE COPIED OR TRANSMITTED