

Excellent Integrated System Limited

Stocking Distributor

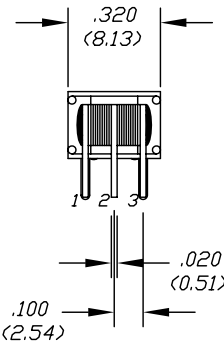
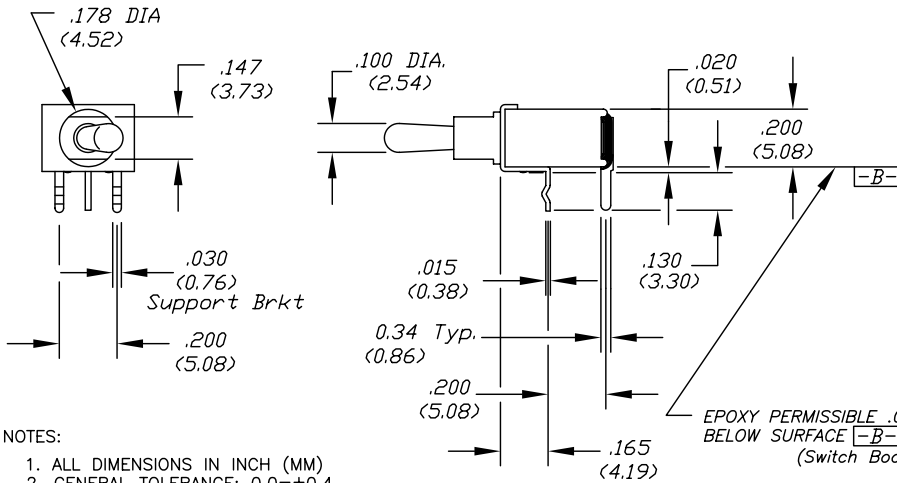
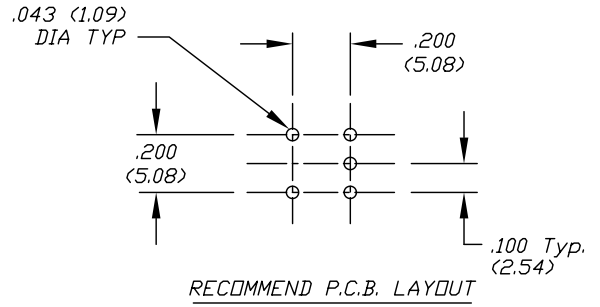
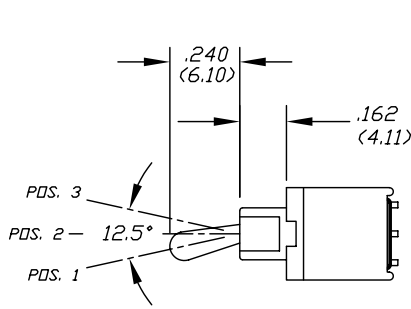
Click to view price, real time Inventory, Delivery & Lifecycle Information:

[E-Switch](#)
[200AWMSP4T2A1M61RE](#)

For any questions, you can email us directly:

sales@integrated-circuit.com

SHEET OF



CIRCUIT: SPDT
 CONTACT CONFIGURATION

| SWITCH FUNCTION | | |
|-----------------|--------|--------|
| POS. 1 | POS. 2 | POS. 3 |
| (ON) | OFF | (ON) |
| 2-3 | OPEN | 2-1 |

(>)=MOMENTARY

NOTES:

1. ALL DIMENSIONS IN INCH (MM)
2. GENERAL TOLERANCE: 0.0=±0.4
0.00=±0.25
3. TERM. NOS. FOR REF. ONLY
4. TERM. NOS. FOR REF. ONLY
5. RATING: 0.4(VA) max. @20V max. (AC or DC)
6. ELECTRICAL LIFE: 50,000 make-and-break cycles at full load.
7. INSULATION RESISTANCE: 100M Ohm min.
8. DIELECTRIC STRENGTH: 1000V RMS min. @sea level
9. OPERATING TEMP.: -30°C to 85°C
10. ▲ DESIGNATE MAJOR FEATURE

E-SWITCH®

| | | | | |
|------------------------------------|---------|----|---------|------|
| TITLE | | | | |
| 200A W M S P - 4 T 2 A 1 M 6 1 R E | | | | |
| SCALE | DATE | DR | DWG | REV. |
| 2:1 | 8/17/99 | MM | T201406 | D |

| | | | | |
|------|---------|-----------------------|---------|------|
| D | 10864 | ADD NOTE | 8/17/00 | MM |
| C | 10711 | EPOXY LOCATION DEFINE | 6/27/00 | MM |
| REV. | ECN No. | DESCRIPTION | DATE | CHKD |

THE INFORMATION CONTAINED IN THIS DOCUMENT IS PROPRIETARY TO E-SWITCH AND IS NOT TO BE COPIED OR TRANSFERRED