

## Excellent Integrated System Limited

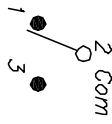
Stocking Distributor

Click to view price, real time Inventory, Delivery & Lifecycle Information:

[E-Switch](#)  
[200MSP2T1B1M1QE](#)

For any questions, you can email us directly:

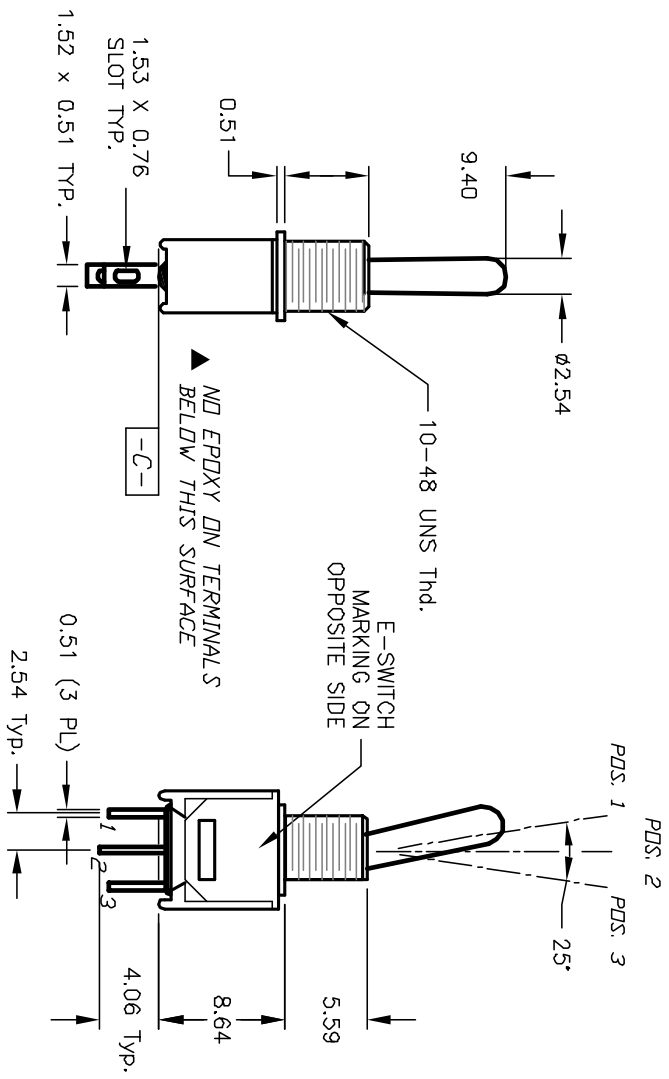
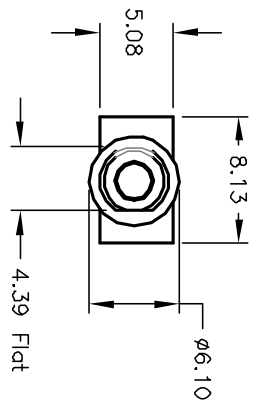
[sales@integrated-circuit.com](mailto:sales@integrated-circuit.com)



SWITCH FUNCTION		
POS. 1	POS. 2	POS. 3
DN	NONE	<DN>
2-3	OPEN	2-1

< > = MOMENTARY

- NOTES:
1. ALL DIMENSIONS IN MM
  2. GENERAL TOLERANCE: X.X=±0.4  
X.XX=±0.25
  3. TERM. NOS. FOR REF. ONLY
  4. CONTACT RATING: 3A @120VAC OR 28VDC, 1A @250VAC
  5. FIXED TERMINAL & MOVING CONTACT: Copper Alloy w/Silver Plate
  6. ELECTRIC LIFE: 30,000 make-and-break cycles at full load.
  7. INSULATION RESISTANCE: 1,000 M ohm min.
  8. DIELECTRIC STRENGTH: 1,000 V RMS @sed level.
  9. OPERATING TEMP. -30°C to 85°C
  10. DESIGNATE MAJOR DIMENSION



REV.	ECN No.	DESCRIPTION	DATE	CHKD
A	12795	RELEASED	2/5/03	CB
B				

TITLE	SCALE	DATE	DR	DWG	REV
200 MSP-2 T1 B1 M1 Q E	2:1	2/5/03	CB	T212052	A

**E-SWITCH®**

THE INFORMATION CONTAINED IN THIS DOCUMENT IS PROPRIETARY TO E-SWITCH AND IS NOT TO BE COPIED OR TRANSMITTED