

Excellent Integrated System Limited

Stocking Distributor

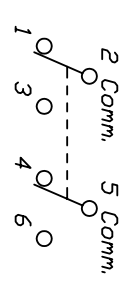
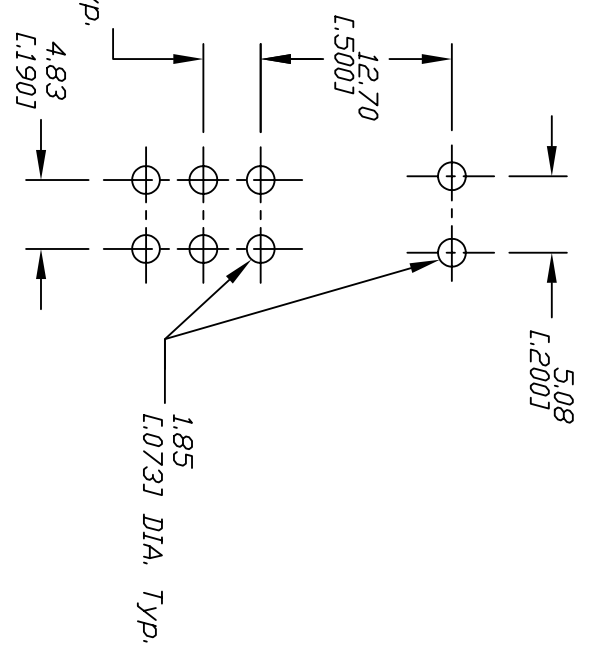
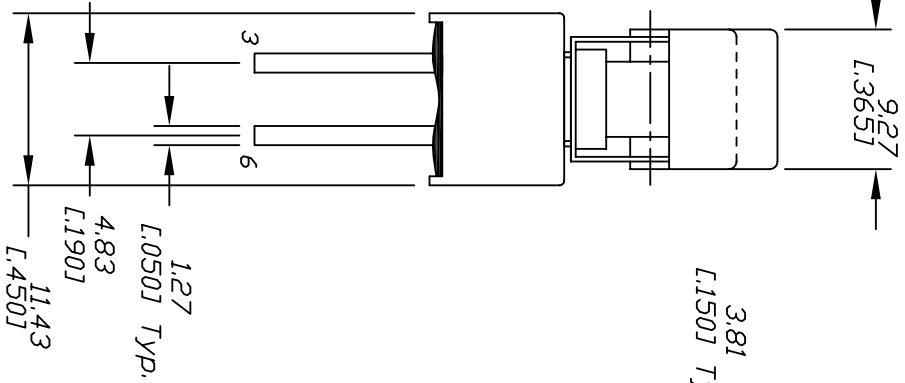
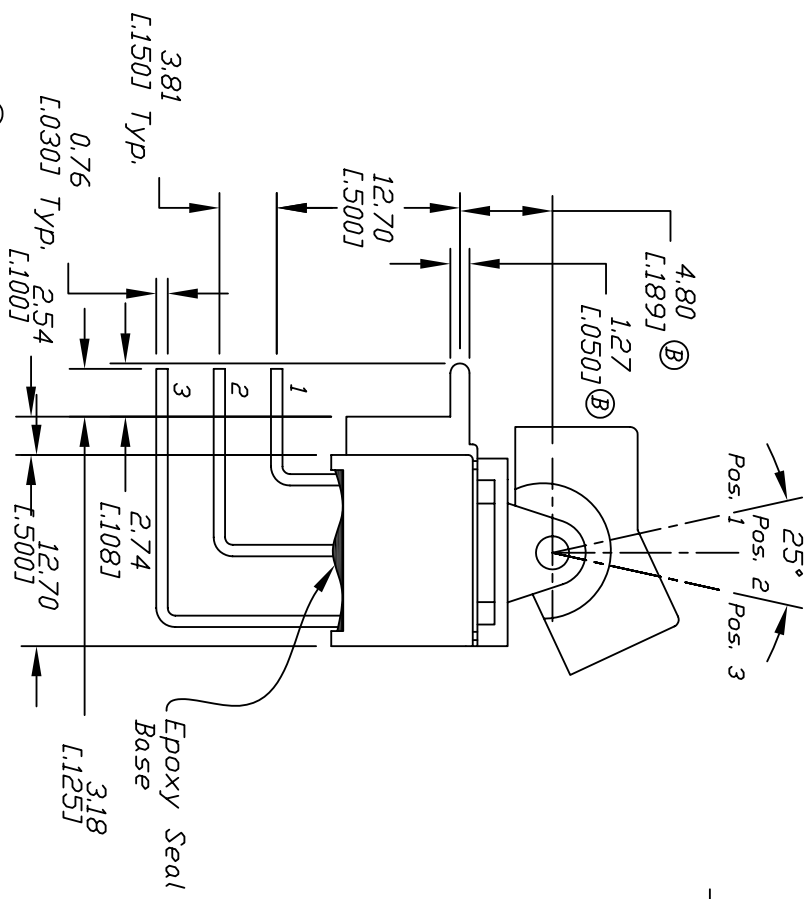
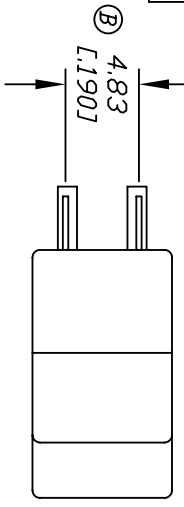
Click to view price, real time Inventory, Delivery & Lifecycle Information:

[E-Switch](#)
[300AWDP1J1BLKM7QE](#)

For any questions, you can email us directly:

sales@integrated-circuit.com

SHEET DF



CIRCUIT: DPDT

CONTACT CONFIGURATION

SWITCH FUNCTION	POS. 1	POS. 2	POS. 3
DN	DN	NONE	DN
2-3,5-6	DPEN	2-1,5-4	

- NOTES: (B)
1. ALL DIMENSIONS IN: MM (INCH)
 2. GENERAL TOLERANCE: XX±0.4, XXX±0.25
 3. TERMINAL NUMBERS FOR REFERENCE ONLY.
 4. PLATING MATERIAL: SILVER
 5. RATING: 5A @ 120VAC DR DC
2A @ 250VAC
 6. ELECTRICAL LIFE: 30,000 MAKE AND BREAK CYCLES.
 7. INSULATION RESISTANCE: 1,000MΩ MIN.
 8. DIELECTRIC STRENGTH: 1,000 V RMS@SEA LEVEL
 9. OPERATING TEMP: -30°C TO 85°C

REV.	REV.	DESCRIPTION	DATE	CHK
C	15430	DIM FROM 3.56	10/21/05	PH
B	15371	UPDATED DRAWING CHANGED NOTED	10/14/05	PH
A		RELEASED FOR PRODUCTION		

SCALE	DATE	DR	DWG	REV
2:1	3/31/98	MM	T301020	C

TITLE: 300A WDP-1 J1 (BLK) M7 Q E

E-SWITCH

DIM FROM 3.56

10/21/05 PH

10/14/05 PH

DESCRIPTION

DATE

CHK

THE INFORMATION CONTAINED IN THIS DOCUMENT IS PROPRIETARY TO E-SWITCH AND IS NOT TO BE COPIED OR TRANSMITTED