

Excellent Integrated System Limited

Stocking Distributor

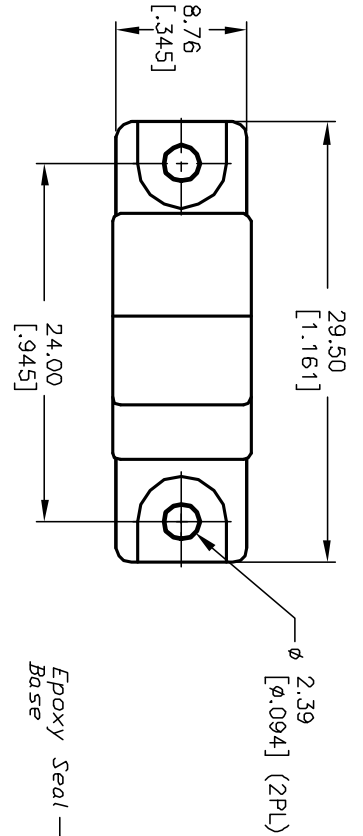
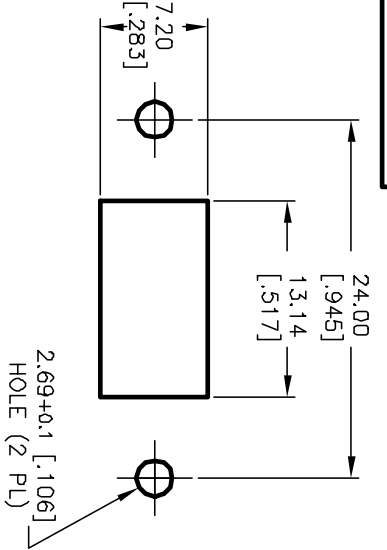
Click to view price, real time Inventory, Delivery & Lifecycle Information:

[E-Switch](#)
[300AWDP4R1M1QE](#)

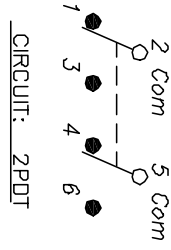
For any questions, you can email us directly:

sales@integrated-circuit.com

SHEET OF



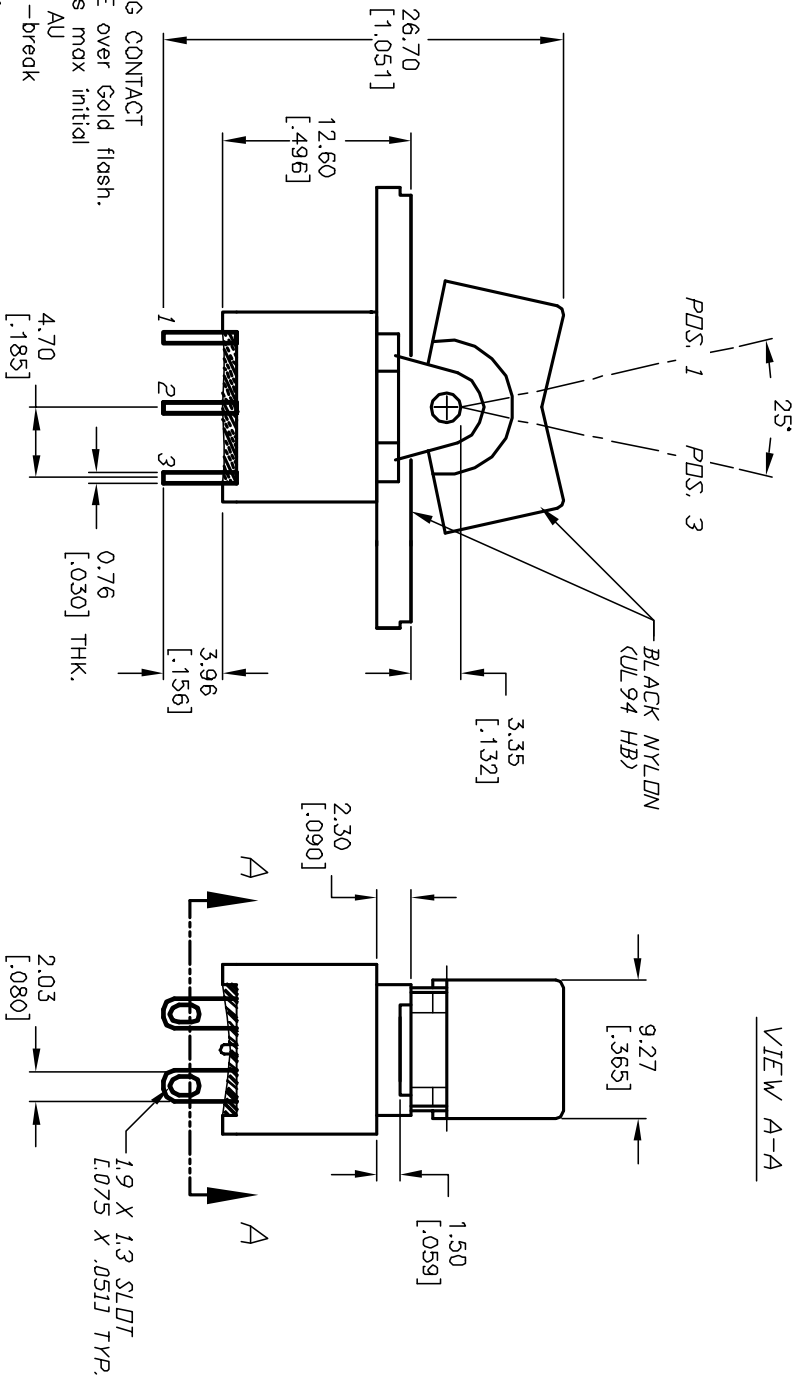
RECOMMENDED PANEL MOUNT



SWITCH FUNCTION			
PDS. 1	PDS. 2	PDS. 3	
<DN>	DEF	<DN>	
2-3,5-6	DPEN	2-1,5-4	

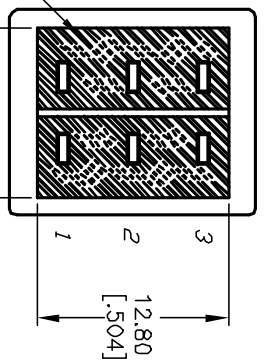
NOTES:

1. ALL DIMENSIONS IN MM [INCH]
2. GENERAL TOLERANCE: X.X=±0.4
X.XX=±0.25
3. TERM. NOS. FOR REF. ONLY
4. RATING: 5A @120VAC OR 29VDC
2A @250VAC
5. MATERIAL: FIXED TERMINAL & MOVING CONTACT
Copper Alloy w/SILVER PLATE over Gold flash.
6. CONTACT RESISTANCE: 10mili Ohms max initial
@2-4VDC, 100mA for AG & AU
7. ELECTRICAL LIFE: 30,000 make-and-break
cycles at full load.
8. INSULATION RESISTANCE: 1,000M ohm min.
9. DIELECTRIC STRENGTH: 1000V RMS @sea level
10. OPERATING TEMP.: -30°C to 85°C



VIEW A-A

Epoxy Seal Base



REV.	ECN No.	DESCRIPTION	DATE	CHKD
A	11912	RELEASED FOR PRODUCTION	2/6/02	CB

TITLE	SCALE	DATE	DR	DWG	REV
300A WDP-4 R1 M1 Q E	2:1	2/6/02	CB	T302007	A

E-SWITCH®

THE INFORMATION CONTAINED IN THIS DOCUMENT IS PROPRIETARY TO E-SWITCH AND IS NOT TO BE COPIED OR TRANSMITTED