

## Excellent Integrated System Limited

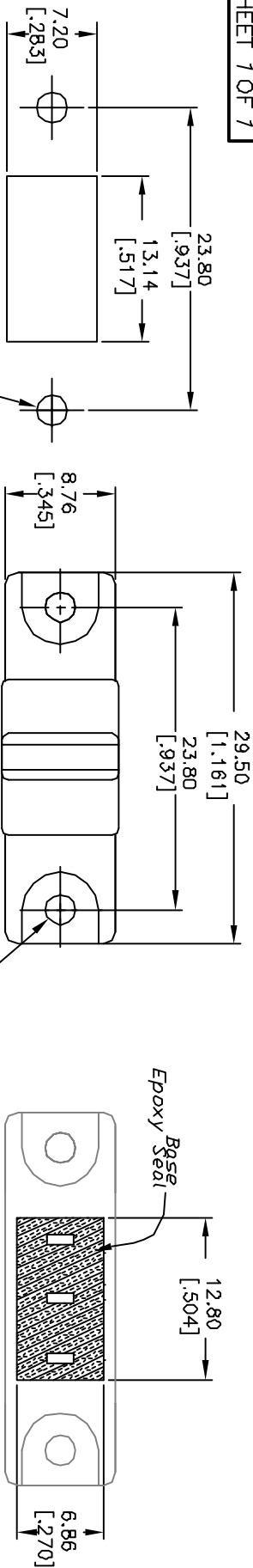
Stocking Distributor

Click to view price, real time Inventory, Delivery & Lifecycle Information:

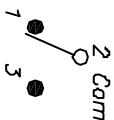
[E-Switch](#)  
[300AWSP4R16M1QE](#)

For any questions, you can email us directly:

[sales@integrated-circuit.com](mailto:sales@integrated-circuit.com)



RECOMMENDED PANEL MOUNT



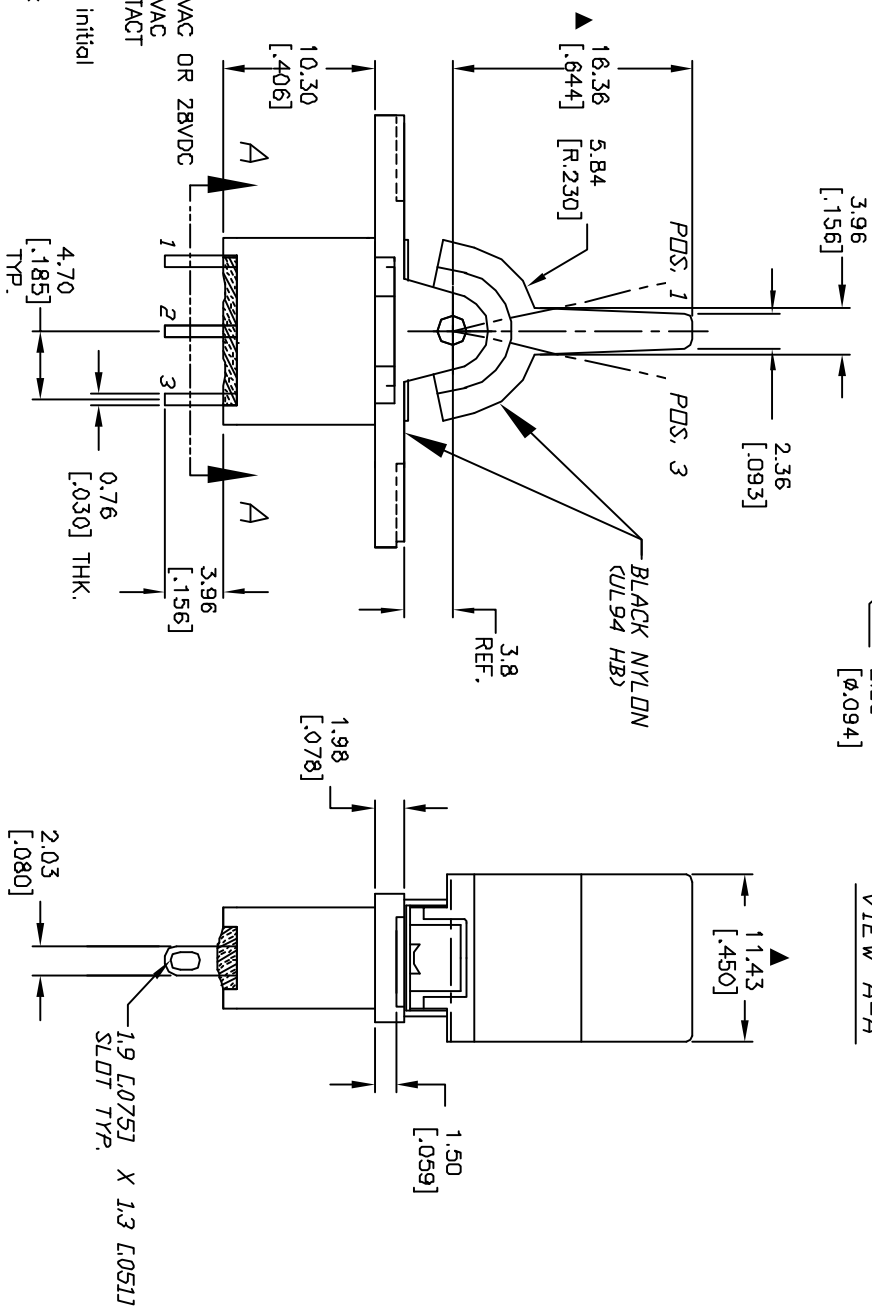
CIRCUIT: SPST

| SWITCH FUNCTION |        |        |
|-----------------|--------|--------|
| POS. 1          | POS. 2 | POS. 3 |
| (COM)           | DEF    | (COM)  |
| 2-3             | OPEN   | 2-1    |

< > = Momentary

NOTES:

1. ALL DIMENSIONS IN MM [INCH]
2. GENERAL TOLERANCE: XX=±0.4  
X.XX=±0.25
3. TERM. NOS. FOR REF. ONLY
4. RATING: 5 AMPS W/RESISTANT LOAD @120VAC OR 28VDC  
2 AMPS W/RESISTANT LOAD @250VAC
5. MATERIAL: FIXED TERMINAL & MOVING CONTACT  
SILVER PLATED COPPER ALLOY
6. CONTACT RESISTANCE: 10mILLI Ohms max initial  
@2-4VDC, 100ma for AG & AU
7. ELECTRICAL LIFE: 30,000 make-and-break  
cycles at full load.
8. INSULATION RESISTANCE: 1,000M ohm min.
9. DIELECTRIC STRENGTH: 1000V RMS @sea level
10. OPERATING TEMP.: -30°C to 85°C
11. ▲ DENOTES CRITICAL PARAMETER.



VIEW A-A

| REV.   | ECN NO. | RELEASED FOR PRODUCTION | DATE    | CHKD | TITLE           | SCALE | DATE    | DR | DWG     | REV |
|--|---------|-------------------------|---------|------|-----------------|-------|---------|----|---------|-----|
| A  | 13301   | RELEASED FOR PRODUCTION | 7/18/03 | AR   | 300AWSP4R16M1QE | 2:1   | 7/18/03 | AR | T301416 | A   |
| THE INFORMATION CONTAINED IN THIS DOCUMENT IS PROPRIETARY TO E-SWITCH AND IS NOT TO BE COPIED OR TRANSMITTED |         |                         |         |      |                 |       |         |    |         |     |

**E-SWITCH®**