

Excellent Integrated System Limited

Stocking Distributor

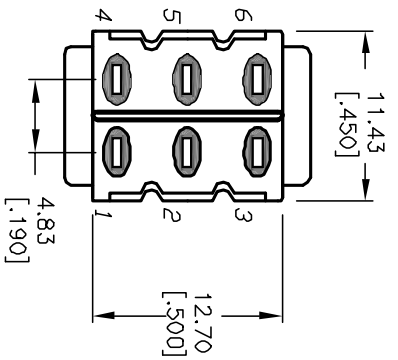
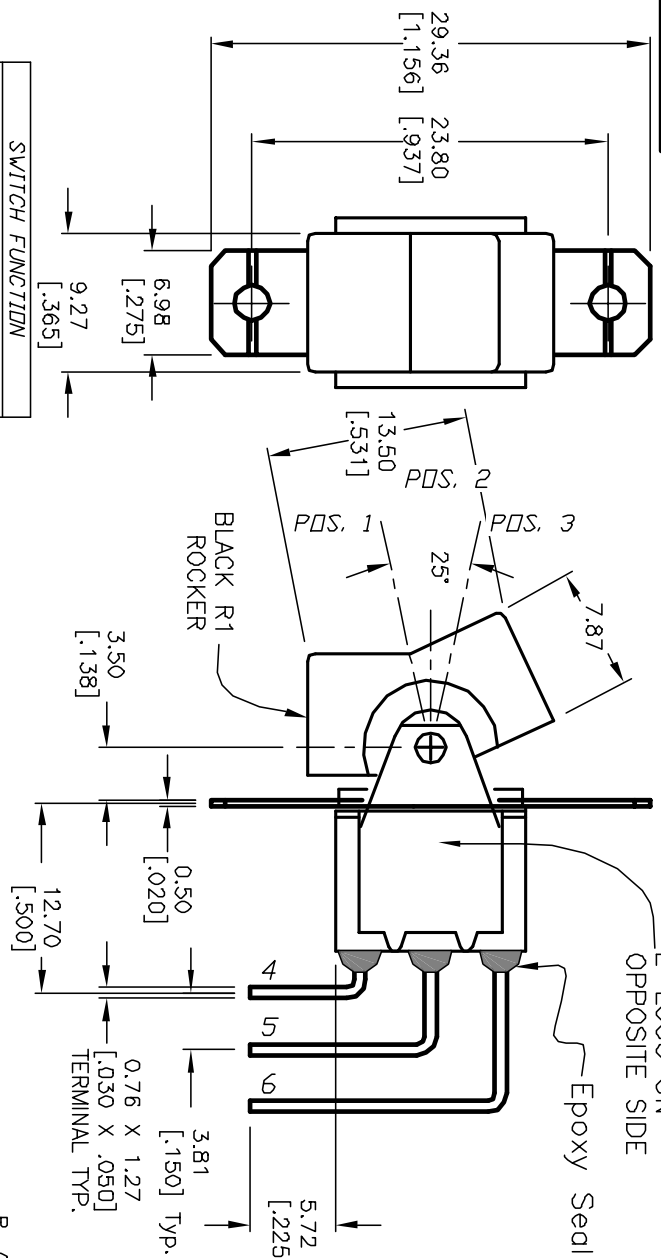
Click to view price, real time Inventory, Delivery & Lifecycle Information:

[E-Switch](#)
[300DP3R1BLKM7QE](#)

For any questions, you can email us directly:

sales@integrated-circuit.com

SHEET OF

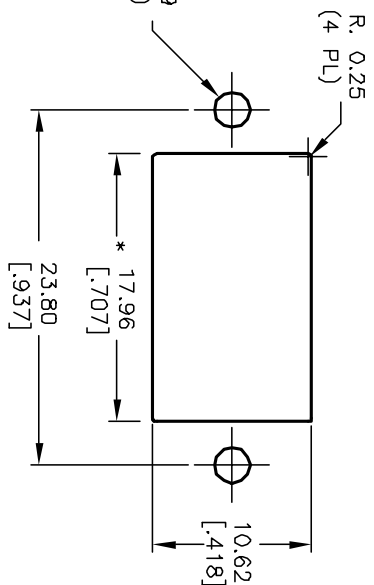
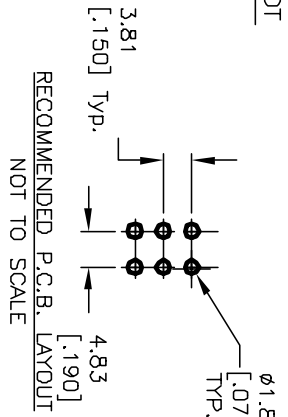
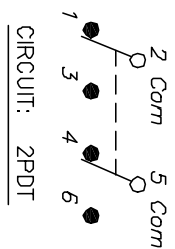


*BOTTOM VIEW
BRACKET CROPPED
FOR CLARITY*

SWITCH FUNCTION			
PDS. 1	PDS. 2	PDS. 3	
DN	DF F	DN	
2-3, 5-6	DPEN	2-1, 5-4	

NOTES:

1. ALL DIMENSIONS IN MM [INCH]
2. GENERAL TOLERANCE: X.X=±0.4 X.XX=±0.25
3. TERM. NOS. FOR REF. ONLY
4. RATING: 5A @120VAC or 28VDC; 2A @250V.
5. MATERIAL: FIXED TERMINAL & MOVING CONTACT
Copper Alloy w/Silver plate
6. CONTACT RESISTANCE: 10mILLI Ohms max initial @2-4VDC, 100mA for AG & AU
7. ELECTRICAL LIFE: 50,000 make-and-break cycles at full load.
8. INSULATION RESISTANCE: 1,000M ohm min.
9. DIELECTRIC STRENGTH: 1000V RMS @sea level
10. OPERATING TEMP.: -30°C to 85°C



PANEL THICKNESS
* DIMENSION IS 15.75/15.88
FOR PANEL THICKNESS BETWEEN
1.52mm TO 3.18mm

E-SWITCH®

REV. A	12315	RELEASED	7/17/02	CJB
ECN No.		DESCRIPTION	DATE	CHKD

TITLE	300 DP-3 (R1 BLK) M7 QE	DATE	7/17/02	DR	CJB	REV	A
SCALE	2:1	SPECIAL PANEL MOUNT/ANGLED TERMINATION		DWG	T323061		

THE INFORMATION CONTAINED IN THIS DOCUMENT IS PROPRIETARY TO E-SWITCH AND IS NOT TO BE COPIED OR TRANSMITTED