

Excellent Integrated System Limited

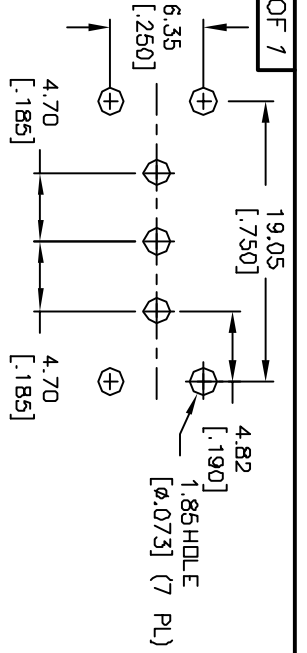
Stocking Distributor

Click to view price, real time Inventory, Delivery & Lifecycle Information:

[E-Switch](#)
[300SP2J3WHTVS4RE](#)

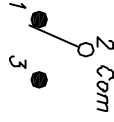
For any questions, you can email us directly:

sales@integrated-circuit.com



RECOMMENDED PCB LAYOUT

SCALE 2:1

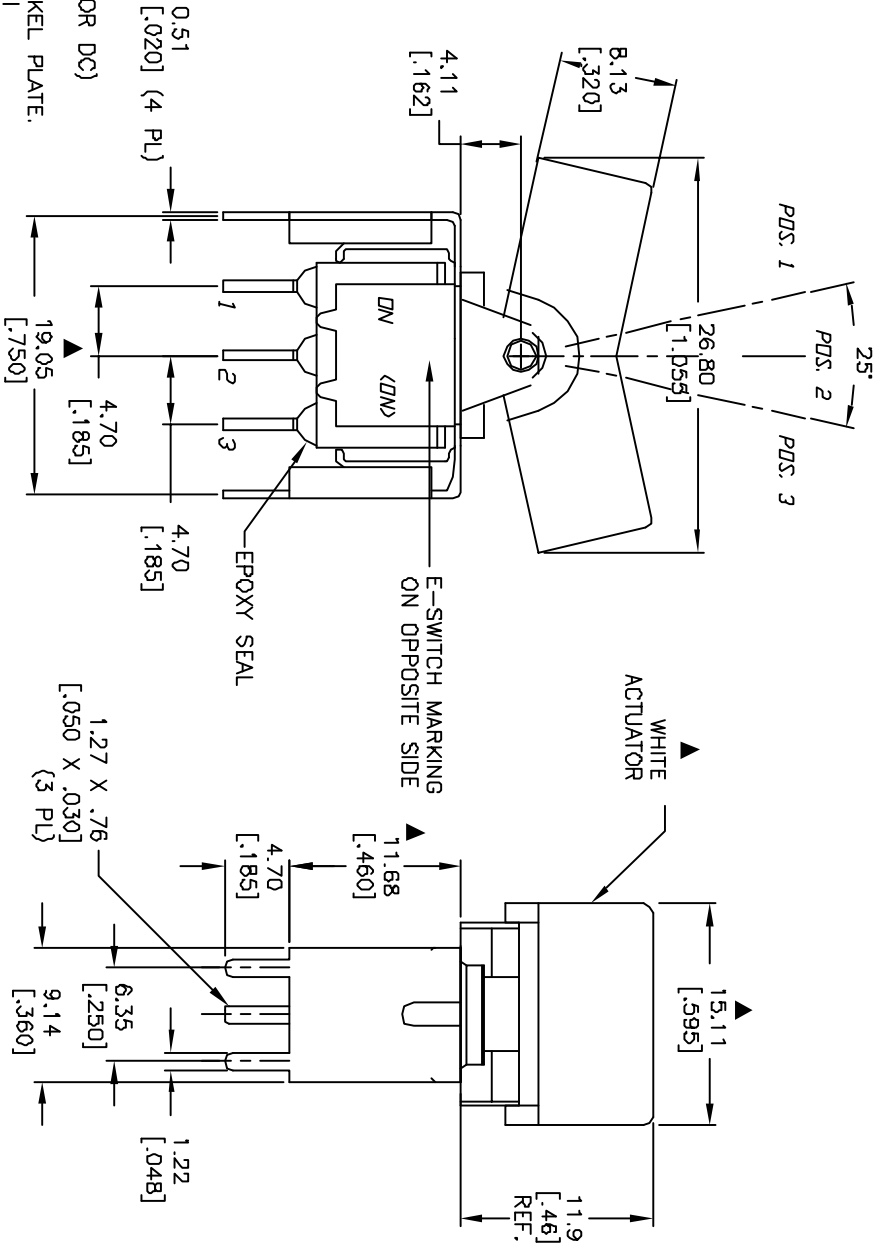


CIRCUIT: SPST

SWITCH FUNCTION	POS. 1	POS. 2	POS. 3
DN	DN	NONE	DN
2-3	OPEN	OPEN	2-1

NOTES:

- ALL DIMENSIONS IN MM [INCH]
- GENERAL TOLERANCE: X.XX=±0.4
X.XXX=±0.25
- TERM. NOS. FOR REF. ONLY
- RATING: 0.4 VOLT-AMPS MAX. @20V MAX. (AC OR DC)
- MATERIAL: FIXED TERMINAL & MOVING CONTACT
Copper Alloy w/GOLD PLATING OVER NICKEL PLATE.
- CONTACT RESISTANCE: 10milli Ohms max initial
@2-4VDC, 100mA for AG & AU
- ELECTRICAL LIFE: 50,000 make-and-break cycles at full load.
- INSULATION RESISTANCE: 1,000M ohm min.
- DIELECTRIC STRENGTH: 1000V RMS @sea level
- OPERATING TEMP.: -30°C to 85°C
- ▲ DENOTES CRITICAL PARAMETER.



REV.	ECN NO.	RELEASED FOR PRODUCTION	DESCRIPTION	DATE	CHKD
A	13275			7/9/03	AR

TITLE	SCALE	DATE	DR	DWG	REV
300SP2J3WHTVS4RE	2:1	7/9/03	AR	T312011	A



THE INFORMATION CONTAINED IN THIS DOCUMENT IS PROPRIETARY TO E-SWITCH AND IS NOT TO BE COPIED OR TRANSMITTED