

## Excellent Integrated System Limited

Stocking Distributor

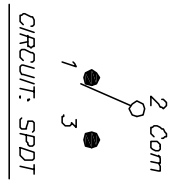
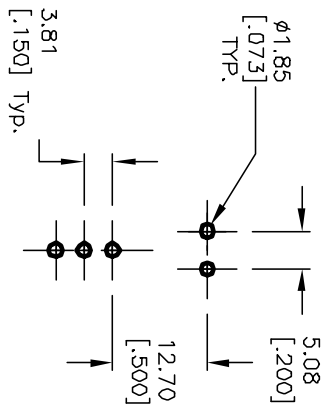
Click to view price, real time Inventory, Delivery & Lifecycle Information:

[E-Switch](#)  
[300SP4J2BLKM7RE](#)

For any questions, you can email us directly:

[sales@integrated-circuit.com](mailto:sales@integrated-circuit.com)

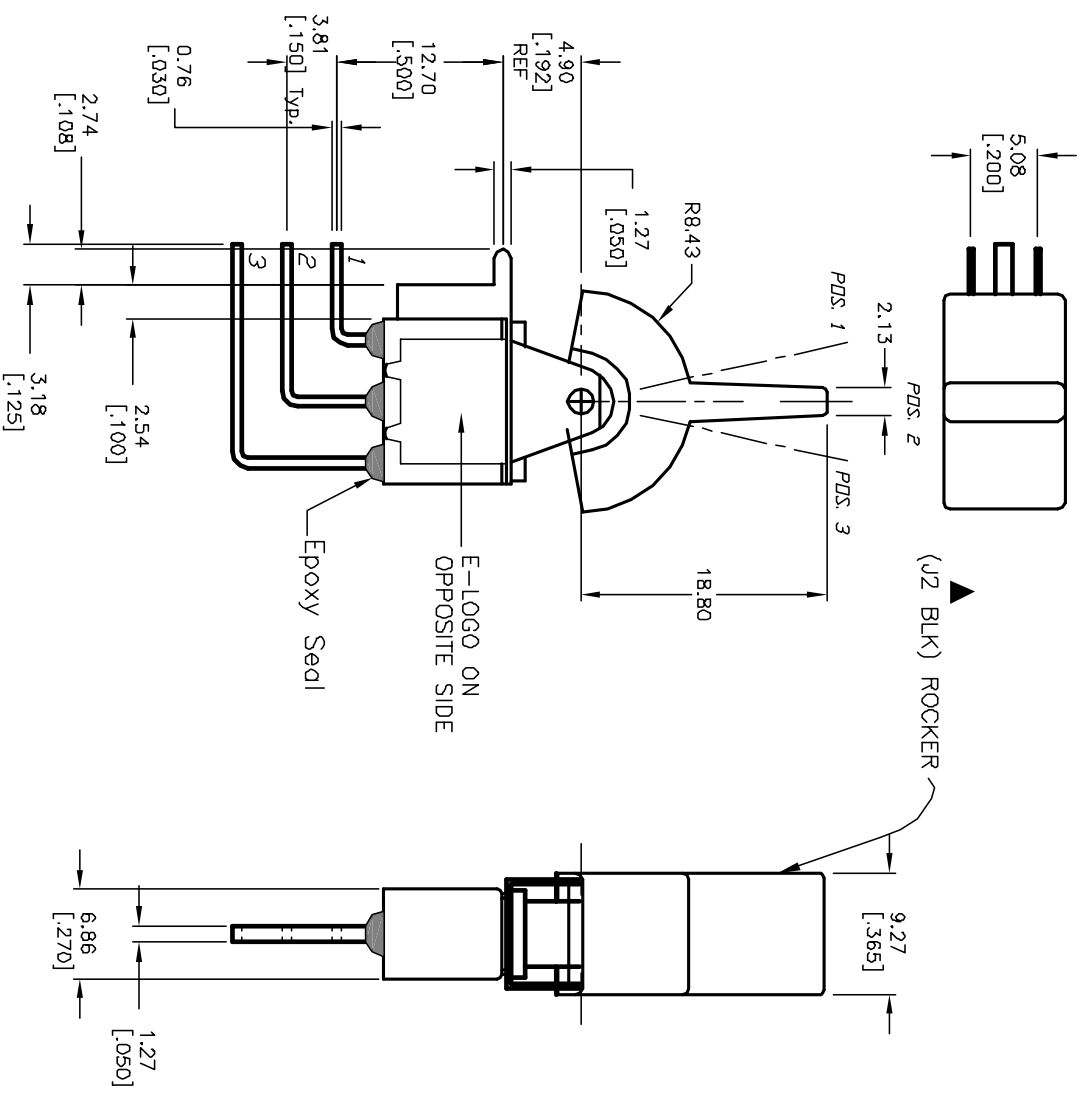
SHEET OF



SWITCH FUNCTION		
PDS. 1	PDS. 2	PDS. 3
(DN)	OFF	(DN)
2-3	OPEN	2-1

( ) = MOMENTARY

- NOTES:
1. ALL DIMENSIONS IN MM [INCH]
  2. GENERAL TOLERANCE: X.X=±0.4 X.XX=±0.25
  3. TERM. NOS. FOR REF. ONLY
  4. RATING: 0.4(VA) max. @20V (AC or DC)
  5. MATERIAL: FIXED TERMINAL & MOVING CONTACT  
Copper Alloy w/GOLD plate over  
Nickel plate
  6. CONTACT RESISTANCE: 10mILLI Ohms max initial  
@2-4VDC, 100mA for AG & AU
  7. ELECTRICAL LIFE: 50,000 make-and-break cycles at full load.
  8. INSULATION RESISTANCE: 1,000M ohm min.
  9. DIELECTRIC STRENGTH: 1000V RMS @sea level
  10. OPERATING TEMP.: -30°C to 85°C



**E-SWITCH®**

TITLE 300 SP-4 (J2 BLK) M7 RE (GOLD CONTACTS)

REV. A	12866	RELEASED	2/28/03	CJB
ECN No.		DESCRIPTION	DATE	CHKD

SCALE	2:1	DATE	2/28/03	DR	CJB	DWG	T314027	REV	A
-------	-----	------	---------	----	-----	-----	---------	-----	---

THE INFORMATION CONTAINED IN THIS DOCUMENT IS PROPRIETARY TO E-SWITCH AND ITS NOT TO BE COPIED OR TRANSMITTED