

Excellent Integrated System Limited

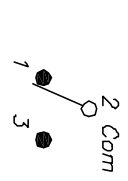
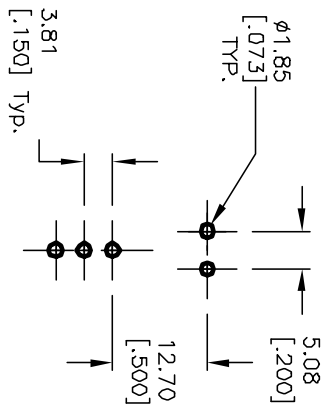
Stocking Distributor

Click to view price, real time Inventory, Delivery & Lifecycle Information:

[E-Switch](#)
[300SP4J6BLKM7RE](#)

For any questions, you can email us directly:

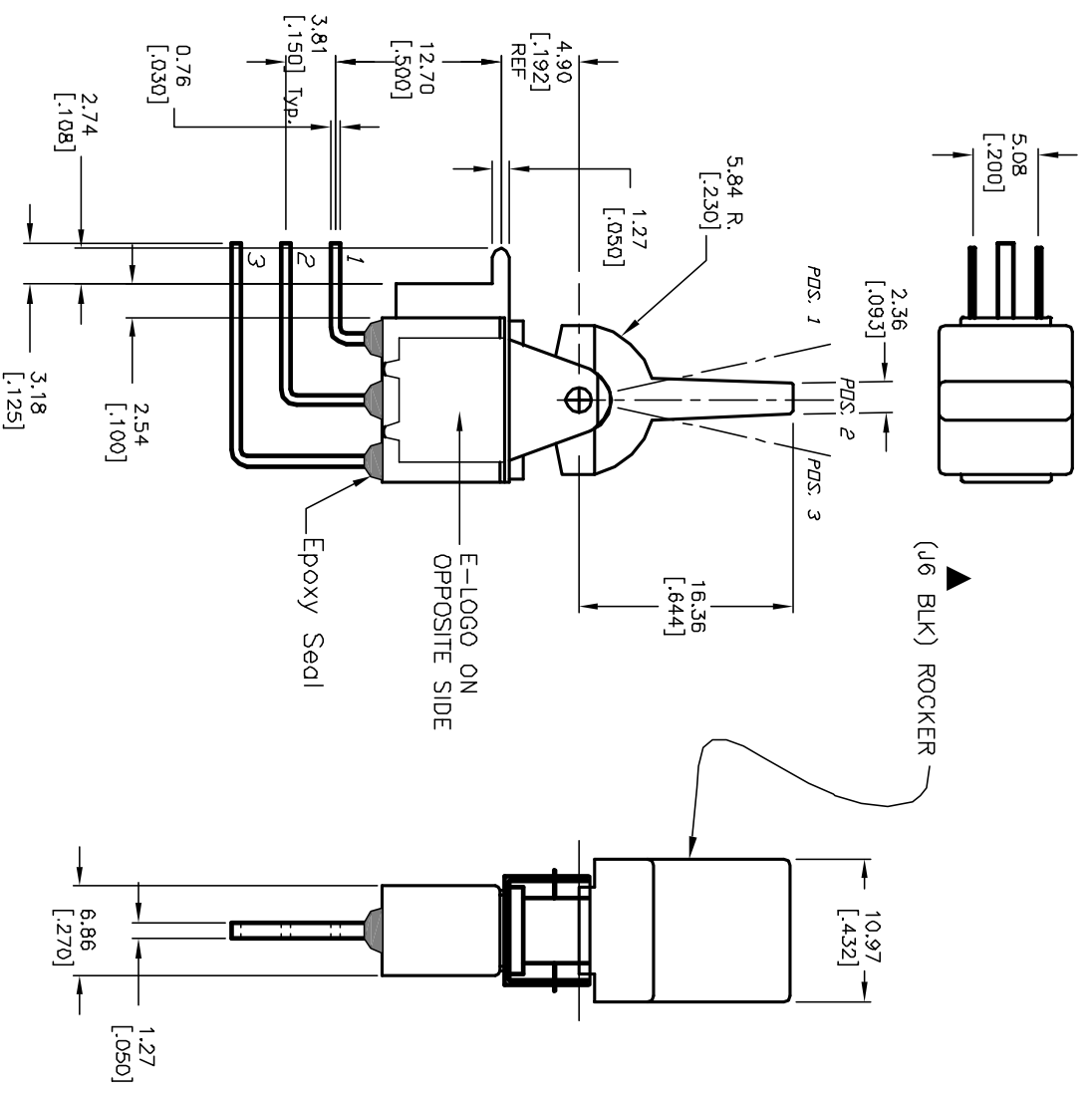
sales@integrated-circuit.com



| SWITCH FUNCTION | | |
|-----------------|--------|--------|
| PDS. 1 | PDS. 2 | PDS. 3 |
| | | |
| (DN) | OFF | (DN) |
| 2-3 | OPEN | 2-1 |

NOTES:

1. ALL DIMENSIONS IN MM [INCH]
2. GENERAL TOLERANCE: X.X=±0.4 X.XX=±0.25 ()=MENTORARY
3. TERM. NOS. FOR REF. ONLY
4. RATING: 0.4(VA) max. @20V (AC or DC)
5. MATERIAL: FIXED TERMINAL & MOVING CONTACT
Copper Alloy w/GOLD plate over
Nickel plate
6. CONTACT RESISTANCE: 10mILLI Ohms max initial
@2-4VDC, 100mA for AG & AU
7. ELECTRICAL LIFE: 50,000 make-and-break
cycles at full load.
8. INSULATION RESISTANCE: 1,000M ohm min.
9. DIELECTRIC STRENGTH: 1000V RMS @sea level
10. OPERATING TEMP.: -30°C to 85°C



| REV. | ECN No. | DESCRIPTION | DATE | CHKD |
|------|---------|-------------|---------|------|
| A | 12867 | RELEASED | 2/28/03 | CJB |

| TITLE | SCALE | DATE | DR | DWG | REV |
|---|-------|---------|-----|---------|-----|
| 300 SP-4 (J6 BLK) M7 RE (GOLD CONTACTS) | 2:1 | 2/28/03 | CJB | T314067 | A |



THE INFORMATION CONTAINED IN THIS DOCUMENT IS PROPRIETARY TO E-SWITCH AND ITS NOT TO BE COPIED OR TRANSMITTED