

Excellent Integrated System Limited

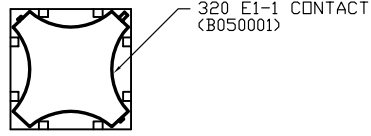
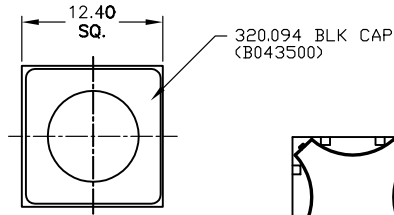
Stocking Distributor

Click to view price, real time Inventory, Delivery & Lifecycle Information:

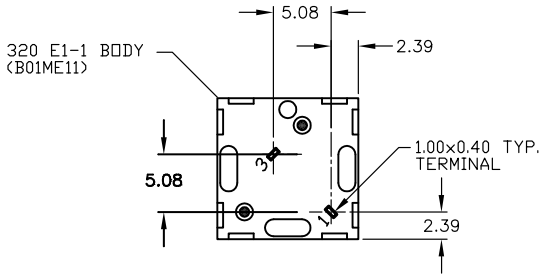
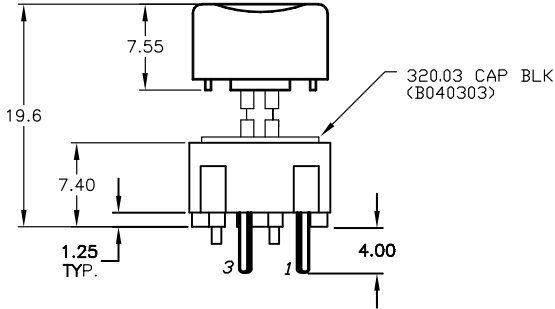
[E-Switch](#)
[320.03E11.094BLK](#)

For any questions, you can email us directly:
sales@integrated-circuit.com

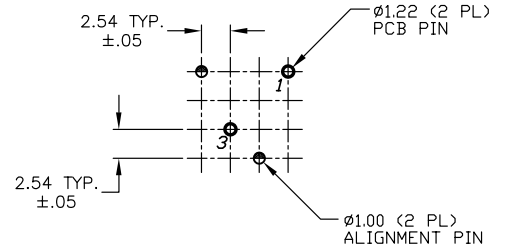
SHEET OF



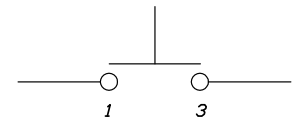
SHOWN CAP REMOVED



TOP VIEW -SHOW ORIENTATION OF LEGENDS IN RESPECT TO THE PCB PIN TERMINALS.



RECOMMENDED P.C.B. LAYOUT



CIRCUIT: SPST
CONTACT CONFIGURATION

- NOTES:
 1. ALL DIMENSIONS IN MM
 2. GENERAL TOLERANCE: X.X=±0.4
 X.XX=±0.25
 3. TERMINAL NO'S FOR REFERENCE ONLY.
 4. RATING: 25mA, @50VDC
 5. OPERATING FORCE: 120gF
 6. TRAVEL TO MAKE: 0.7mm

E-SWITCH®

TITLE					320.03 E1-1 .094 BLK				
SCALE	DATE	DR	DWG	REV	SCALE	DATE	DR	DWG	REV
2:1	1/8/04	AR	XB0905P	A					

A	13686	RELEASED FOR PRODUCTION	1/8/04	AR
REV.	ECN No.	DESCRIPTION	DATE	CHKD
THE INFORMATION CONTAINED IN THIS DOCUMENT IS PROPRIETARY TO E-SWITCH AND IS NOT TO BE COPIED OR TRANSFERRED				