

Excellent Integrated System Limited

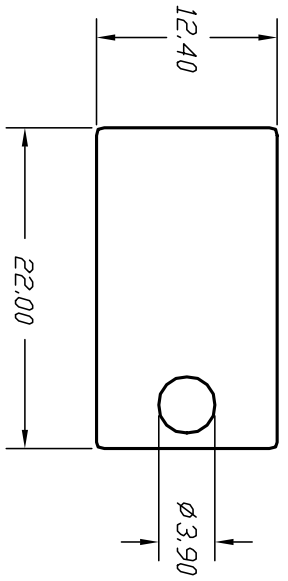
Stocking Distributor

Click to view price, real time Inventory, Delivery & Lifecycle Information:

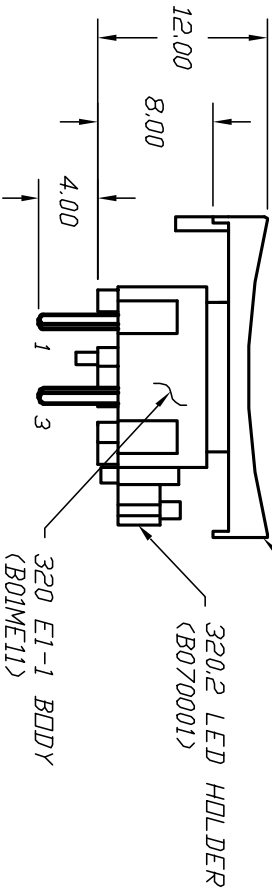
[E-Switch](#)
[320.2E11RED](#)

For any questions, you can email us directly:

sales@integrated-circuit.com

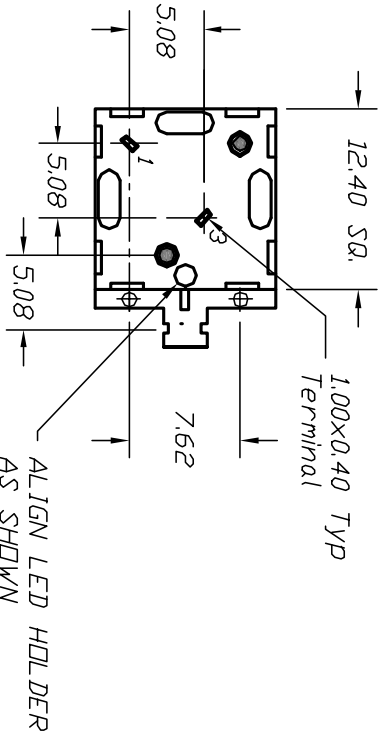


320.2 RED CAP
(B042003)



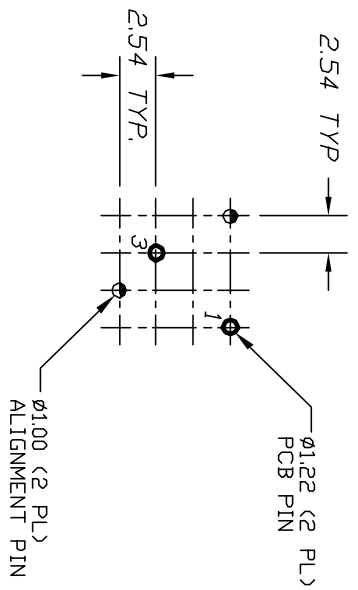
320.2 LED HOLDER
(B070001)

320 E1-1 BODY
(B01ME11)



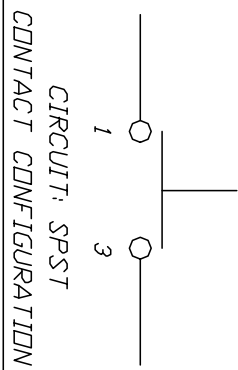
1.00X0.40 TYP
Terminal

ALIGN LED HOLDER
AS SHOWN



RECOMMENDED P.C.B. LAYOUT

TOP VIEW - SHOW ORIENTATION OF LEGENDS
IN RESPECT TO THE PCB PIN TERMINALS.



NOTES:

1. ALL DIMENSIONS IN MM
2. GENERAL TOLERANCE: 0.0 \pm 0.4
0.00 \pm 0.25
3. TERM. NOS. FOR REF. ONLY
4. CONTACT RATING: 25mA/50V DC.
5. TRAVEL: 0.7mm
6. OPERATING FORCE: 120gf.
7. USES E1-1 CONTACT DOME (B050001)

E-SWITCH®

B				
A	12391	RELEASED FOR PRODUCTION	8/30/02	CB
REV.	ECN No.	DESCRIPTION	DATE	CHKD
THE INFORMATION CONTAINED IN THIS DOCUMENT IS PROPRIETARY TO E-SWITCH AND IS NOT TO BE COPIED OR TRANSMITTED				

TITLE		SCALE		DATE	DR	DWG	REV
320.2 E1-1 RED, W/LED HOLDER		2:1		--	--	XB0767P	A