

## Excellent Integrated System Limited

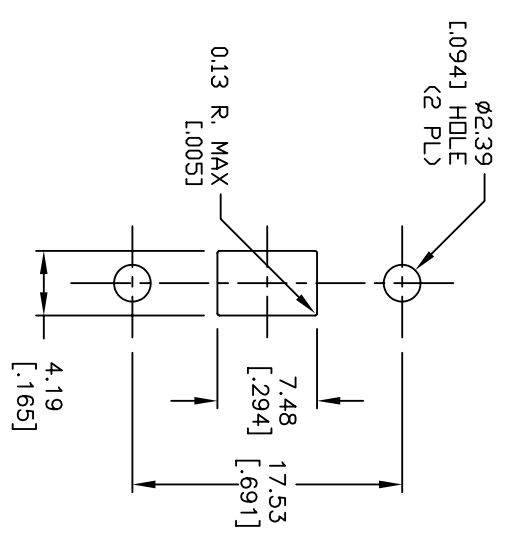
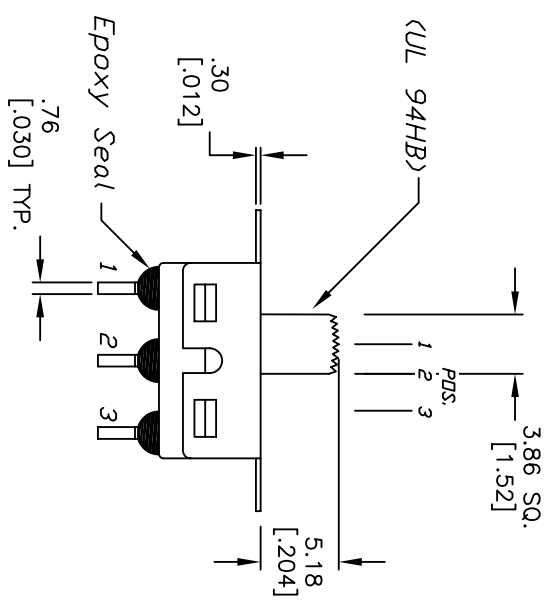
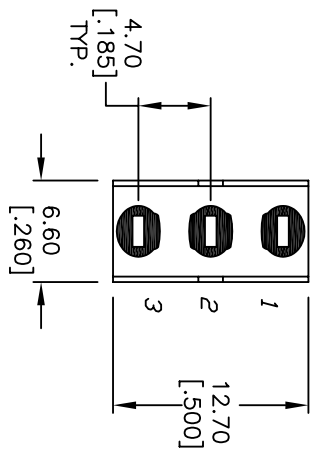
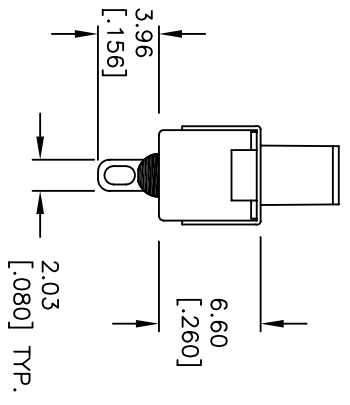
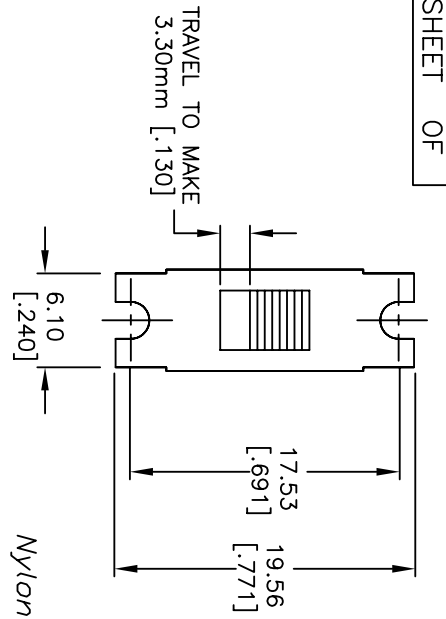
Stocking Distributor

Click to view price, real time Inventory, Delivery & Lifecycle Information:

[E-Switch](#)  
[500SSP3S1M1QEB](#)

For any questions, you can email us directly:

[sales@integrated-circuit.com](mailto:sales@integrated-circuit.com)

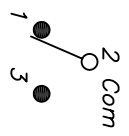


RECOMMENDED PANEL CUTOUT

NOTES:

1. ALL DIMENSIONS IN MM [INCH]
2. GENERAL TOLERANCE: X.X=±0.4 X.XX=±0.25
3. TERM NOS. FOR REF. ONLY
4. RATING: 5A @120VAC or 28VDC: 2A @250VAC
5. CONTACT MATERIAL:  
Copper Alloy w/Silver plate
6. ELECTRICAL LIFE: 50,000 ACTUATIONS @Full Load
7. INSULATION RESISTANCE: 1000 Mega Ohms min.
8. DIELECTRIC STRENGTH: 1000V RMS @SEA LEVEL.
9. OPERATING TEMPERATURE: -30°C TO 85°C
10. 2002/95/EC (ROHS) COMPLIANT

CIRCUIT: SPDT



SWITCH FUNCTION

SWITCH FUNCTION	PDS. 1	PDS. 2	PDS. 3
DN			
2-1			

REV.	ECN No.	DESCRIPTION	DATE	CHKD
C	15970	UPDATE SWITCH TRAVEL DIM	4/18/06	CT
B	15901	EDIT PANEL DIM, ADD ROHS	3/27/06	PH
A	12100	RELEASED FOR PRODUCTION	4/29/02	CJB

SCALE	DATE	DR	DWG	REV
2:1	4/29/02	CJB	T511204	C

**E-SWITCH®**

500 SSP-3 S1 M1 Q E B

THE INFORMATION CONTAINED IN THIS DOCUMENT IS PROPRIETARY TO E-SWITCH AND IS NOT TO BE COPIED OR TRANSFERRED