

Excellent Integrated System Limited

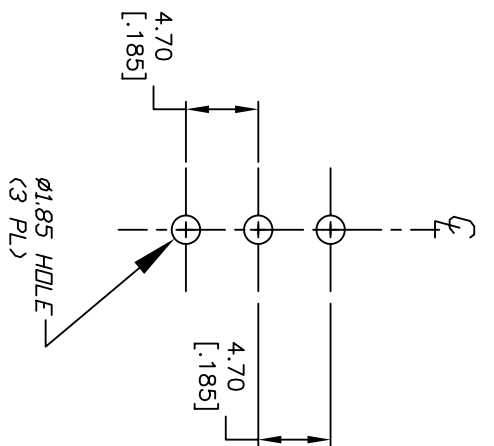
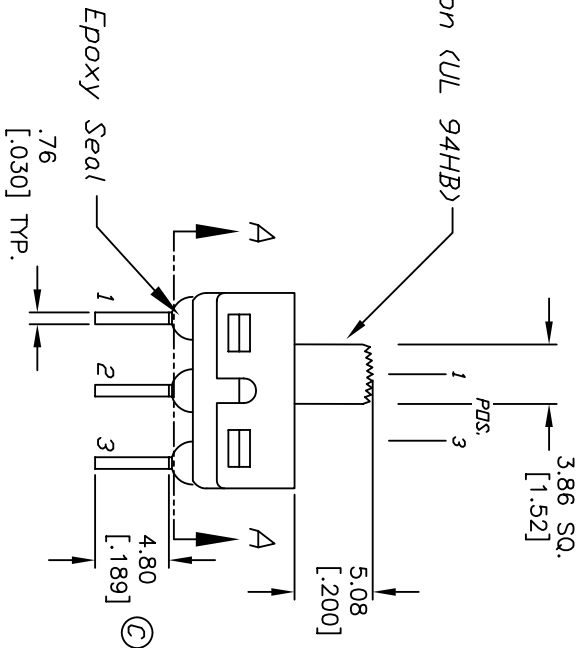
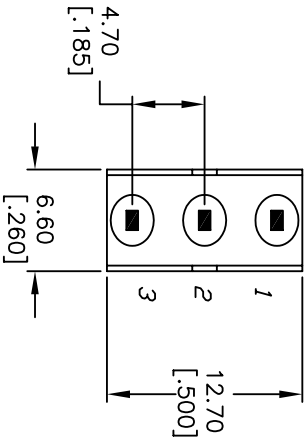
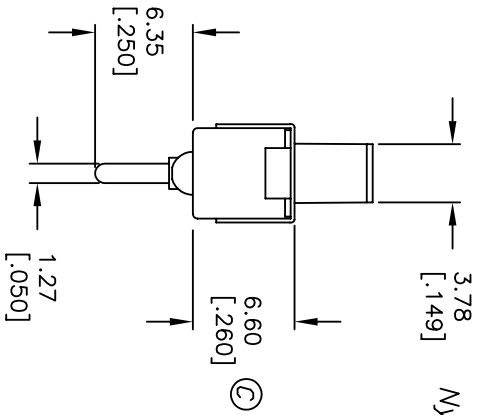
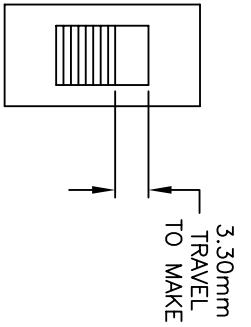
Stocking Distributor

Click to view price, real time Inventory, Delivery & Lifecycle Information:

[E-Switch](#)
[500SSP3S1M2QEA](#)

For any questions, you can email us directly:

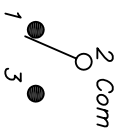
sales@integrated-circuit.com



NOTES:

1. ALL DIMENSIONS IN MM [INCH]
2. GENERAL TOLERANCE: X.X=±0.4 X.XX=±0.25
3. TERM NOS. FOR REF. ONLY
4. RATING: 5A @120VAC or 28VDC: 2A @250VAC
5. CONTACT MATERIAL:
Copper Alloy w/Silver plate
6. ELECTRICAL LIFE: 50,000 ACTUATIONS @Full Load
7. INSULATION RESISTANCE: 1000 Mega Ohms min.
8. DIELECTRIC STRENGTH: 1000V RMS @SEA LEVEL.
9. OPERATING TEMPERATURE: -30°C TO 85°C

CIRCUIT: SPDT



SWITCH FUNCTION

PDS. 1	PDS. 2	PDS. 3
DN	DN	DN
2-1	DPEV	2-3

E-SWITCH®

REV.	ECN No.	DESCRIPTION	DATE	CHKD
D	15310	DIM TD 3.30 FROM 2.16	9/21/05	PH
C	11645	REVISED AND REDRAWN	9/6/01	CJB

SCALE	DATE	DR	DWG	REV
2:1	9/6/01	CJB	T522002	D

THE INFORMATION CONTAINED IN THIS DOCUMENT IS PROPRIETARY TO E-SWITCH AND IS NOT TO BE COPIED OR TRANSFERRED

electronic components

TITLE: 500 SSP-3 S1 M2 Q E A