

Excellent Integrated System Limited

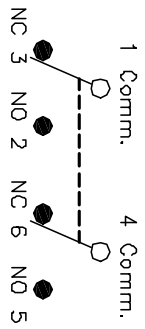
Stocking Distributor

Click to view price, real time Inventory, Delivery & Lifecycle Information:

[E-Switch](#)
[700DP7B10M1REC2RED](#)

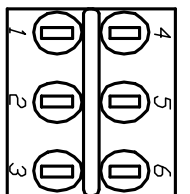
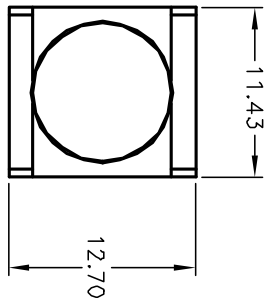
For any questions, you can email us directly:

sales@integrated-circuit.com



CIRCUIT: DPDT

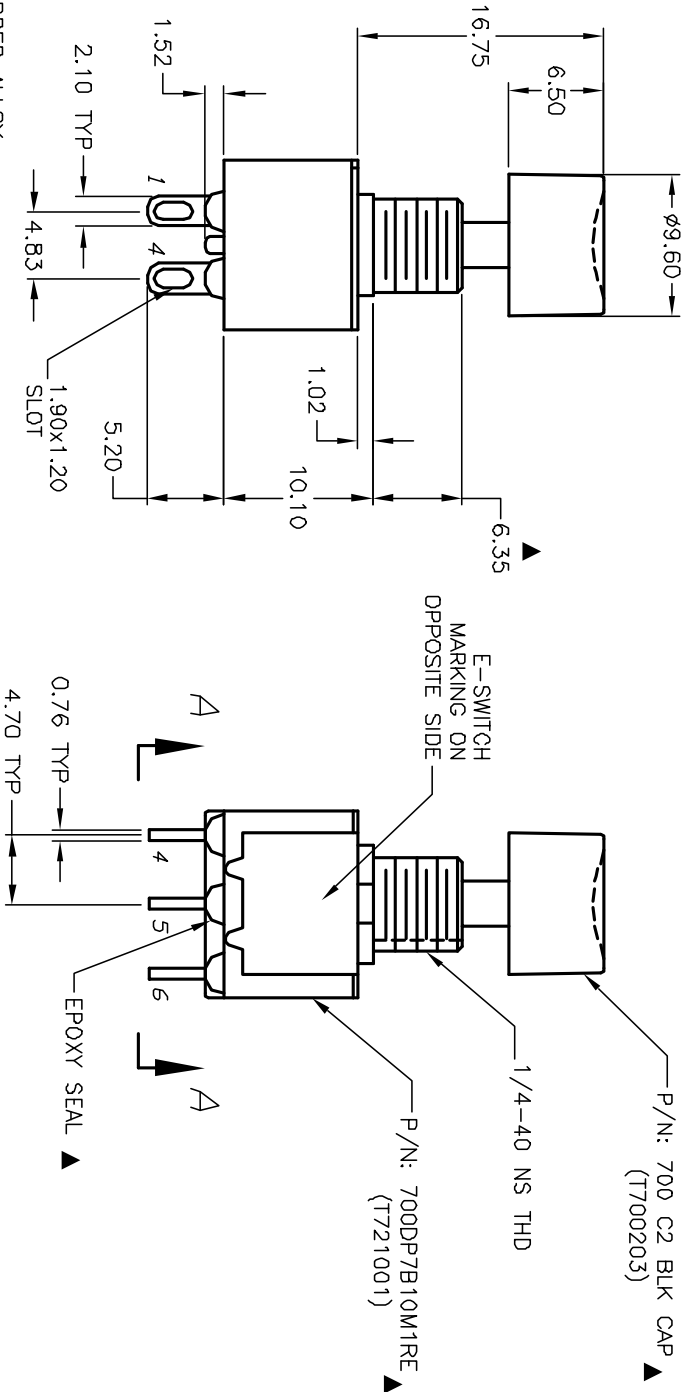
CONTACT CONFIGURATION



VIEW A-A

DN	(DN)
1-3,4-6	1-2,4-5

() = DIMMENTARY



NOTES:

1. ALL DIMENSIONS IN MM
2. GENERAL TOLERANCE: 0.0=±0.4
0.00=±0.25
3. TERM. NOS. FOR REF. ONLY
4. MATERIAL: CONTACTS: GOLD PLATED COPPER ALLOY
5. RATING: 0.4 VA max. @20V (AC or DC) max.
6. ELECTRICAL LIFE: 50,000 make-and-break cycles at full load.
7. INSULATION RESISTANCE: 1,000 mega-ohm
8. DIELECTRIC STRENGTH: 1,000 V RMS @sea level
9. OPERATING TEMP.: -30°C to 85°C
10. ▲ DENOTES CRITICAL PARAMETER.

A	13154	RELEASED FOR PRODUCTION	5/23/03	AR
REV.	ECN NO.	DESCRIPTION	DATE	CHKD

THE INFORMATION CONTAINED IN THIS DOCUMENT IS PROPRIETARY TO E-SWITCH AND IS NOT TO BE COPIED OR TRANSFERRED

TITLE				
700DP7B10M1REC2RED				
E-SWITCH®				
SCALE	DATE	DR	DWG	REV
2:1	5/23/03	AR	XT0113P	A